

NEIL BRADLEY ADDITION

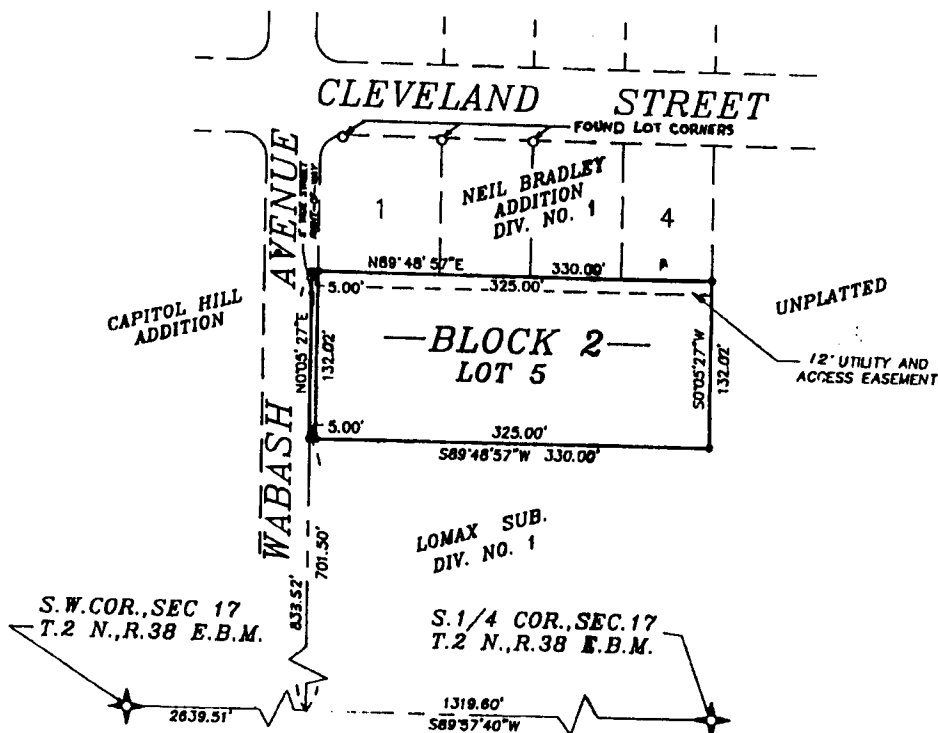
DIVISION NO. 2

TO THE CITY OF IDAHO FALLS, BONNEVILLE COUNTY, IDAHO
PART OF THE S.E.1/4 OF THE S.W.1/4 OF SECTION 17, T.2 N.,R.38 E.B.M.

First American Title Company

Idaho Falls, Idaho 83404

This sketch is made solely for the purpose of assisting in locating the premises. The company assumes no liability for alleged loss or damage which may result from reliance on this map.



NOTES

— indicates a 1/2" x 24" iron rod with a yellow plastic cap marked "L.S. 760".

a 10' wide utility easement is reserved along the street side of all lots.