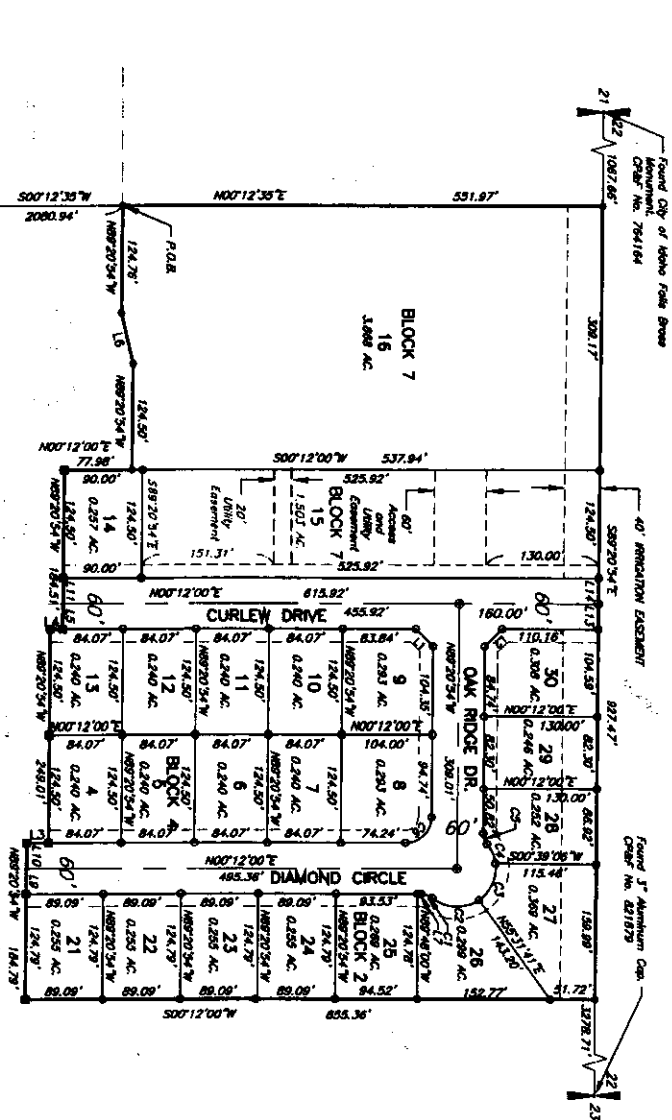


OAK RIDGE ADDITION

DIVISION NO. 2

AN ADDITION TO THE CITY OF AMMON
 Part of the SW 1/4 of
 Section 22, T 2 N., R 38 E., B.M.
 BONNEVILLE COUNTY, IDAHO



EAST 17th STREET
BASIS OF BEARING - CITY OF IDAHO FALLS PRE-2004

First American Title Company
 Idaho Falls, ID 83404
 While this is a photographic
 reproduction of the recorded
 plat, the company assumes
 no liability for variations,
 if any, with a re-survey.

LEGEND

- Section control corners
- Set 5/8" x 3/32" iron rod with
 brass-cap marked P.L.S. 4563
- Set 1/2" x 24" iron rod with
 brass-cap marked P.L.S. 4563
- Found 5/8" x 3/32" iron rod with
 brass-cap marked P.L.S. 4563
- Found 1/2" x 24" iron rod with
 brass-cap marked P.L.S. 4563
- Utility easements are 15' wide
 along the street frontage of all lots.
- P.O.B. Point of Beginning

GRAPHIC SCALE

LINE	LENGTH	BEARING
L1	28.40	S 45°25'33" W
L2	28.17	N 44°34'27" W
L3	25.07	N 00°12'00" E
L4	14.37	N 00°12'00" E
L5	30.00	S 89°20'54" E
L6	61.51	S 77°28'16" W
L7	4.18	N 00°12'00" E
L8	30.00	S 89°20'54" E
L9	30.00	S 89°20'54" E
L10	30.00	S 89°20'54" E
L11	30.00	S 89°20'54" E
L12	30.00	N 89°20'54" W
L13	30.00	N 89°20'54" W
L14	30.00	N 89°20'54" W

CLAVE	NUMBER	DATE	CLAVE TABLE	CHORD BEARING	CHORD DISTANCE
C1	20.00	38°42'34"	13.88	S 20°31'27" W	13.89
C2	43.00	78°21'14"	38.42	N 02°43'18" E	34.41
C3	43.00	63°07'45"	48.58	N 86°02'12" W	47.11
C4	43.00	31°27'44"	24.71	S 86°40'03" W	24.40
C5	20.00	38°42'34"	13.88	N 20°47'28" E	13.89
C6	20.00	62°32'34"	45.89	N 44°34'27" W	42.26