

LINE	LENGTH	BEARING
L1	44.82'	S 00°08'56" E
L2	24.28'	S 44°28'00" E
L3	2.90'	N 28°03'50" W
L4	42.02'	N 44°42'55" W

OAK RIDGE BUSINESS PARK PHASE I

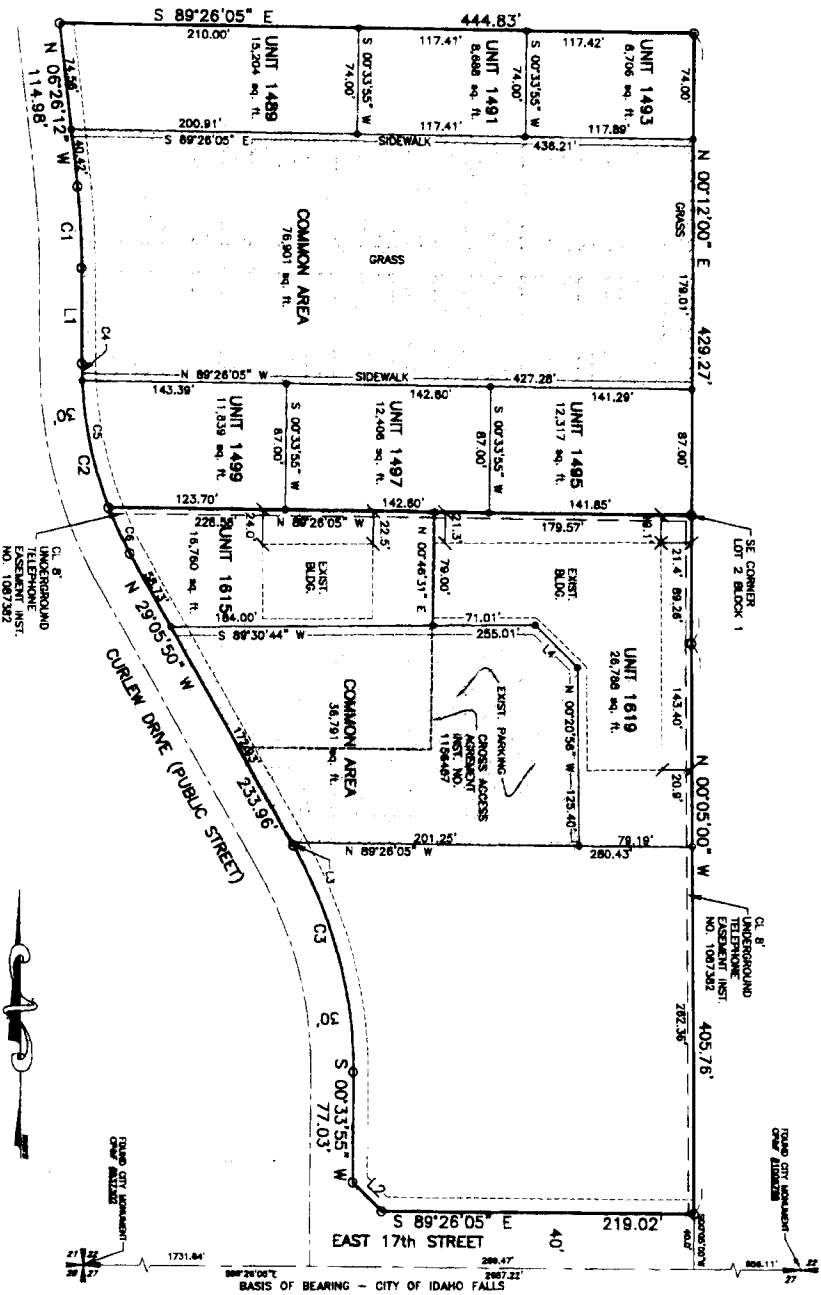
PURSUANT TO IDAHO CODE, TITLE 55 CHAPTER 15
BEING ALL OF LOTS 1 AND 2, BLOCK 1
OF OAK RIDGE DIVISION NO. 1
AN ADDITION TO THE CITY OF AMMON, BONNEVILLE COUNTY, IDAHO
PART OF THE SECTION 22, T. 2 N., R. 38 E., B.M.

Curve	Radius	Delta	Length	Chord Bearing	Chord Distance
C1	530.00'	61.81°	58.47'	N 02°18'35" W	58.44'
C2	270.00'	28.28°	136.57'	S 14°28'24" E	135.12'
C3	330.00'	28.28°	170.84'	N 14°15'56" W	169.84'
C4	270.00'	28.28°	120.07'	S 01°23'50" E	120.07'
C5	270.00'	19°00'56"	89.81'	S 12°11'10" E	89.20'
C6	270.00'	74.43°	34.89'	S 22°23'45" E	34.86'

LEGEND

- Section control corners
- Found 1/2"x24" iron rod with cap marked P.L.S. 4583
- Set 1/2"x24" iron rod with cap marked P.L.S. 4583
- Unit Boundary
- Utility easements are 10' wide along the street frontage of all units and common areas.
- POB Point of Beginning
- Common Area

First American Title Company
Idaho Falls, Idaho 83406
While this is a photographic reproduction of the recorded plat, the Company assumes no liability for variations, if any, with a recovery.



UNIT #	ADDRESS
UNIT 1489	1489 CURLEW
UNIT 1491	1481 CURLEW
UNIT 1493	1483 CURLEW
UNIT 1495	1487 CURLEW
UNIT 1497	1489 CURLEW
UNIT 1499	1615 CURLEW
UNIT 1619	1619 CURLEW

NOTE:

EACH UNIT CONSISTS OF THE ENTIRE PROPERTY ENCLOSED BY THE UNIT BOUNDARY LINES INCLUDING THE LAND AND ALL IMPROVEMENTS THEREON, BUT SUBJECT TO THE COVENANTS, RESTRICTIONS, AND EASEMENTS SET FORTH IN THE DECLARATION FOR MAINTENANCE PURPOSES, ETC.

FOR DISTRICT 7 HEALTH DEPARTMENT APPROVAL, SEE OAK RIDGE DIVISION NO. 1, RECORDED MARCH 29, 2001 UNDER INSTRUMENT NO. 1044372.

