

1st AMENDED PLAT OF OAK RIDGE

DIVISION NO. 1

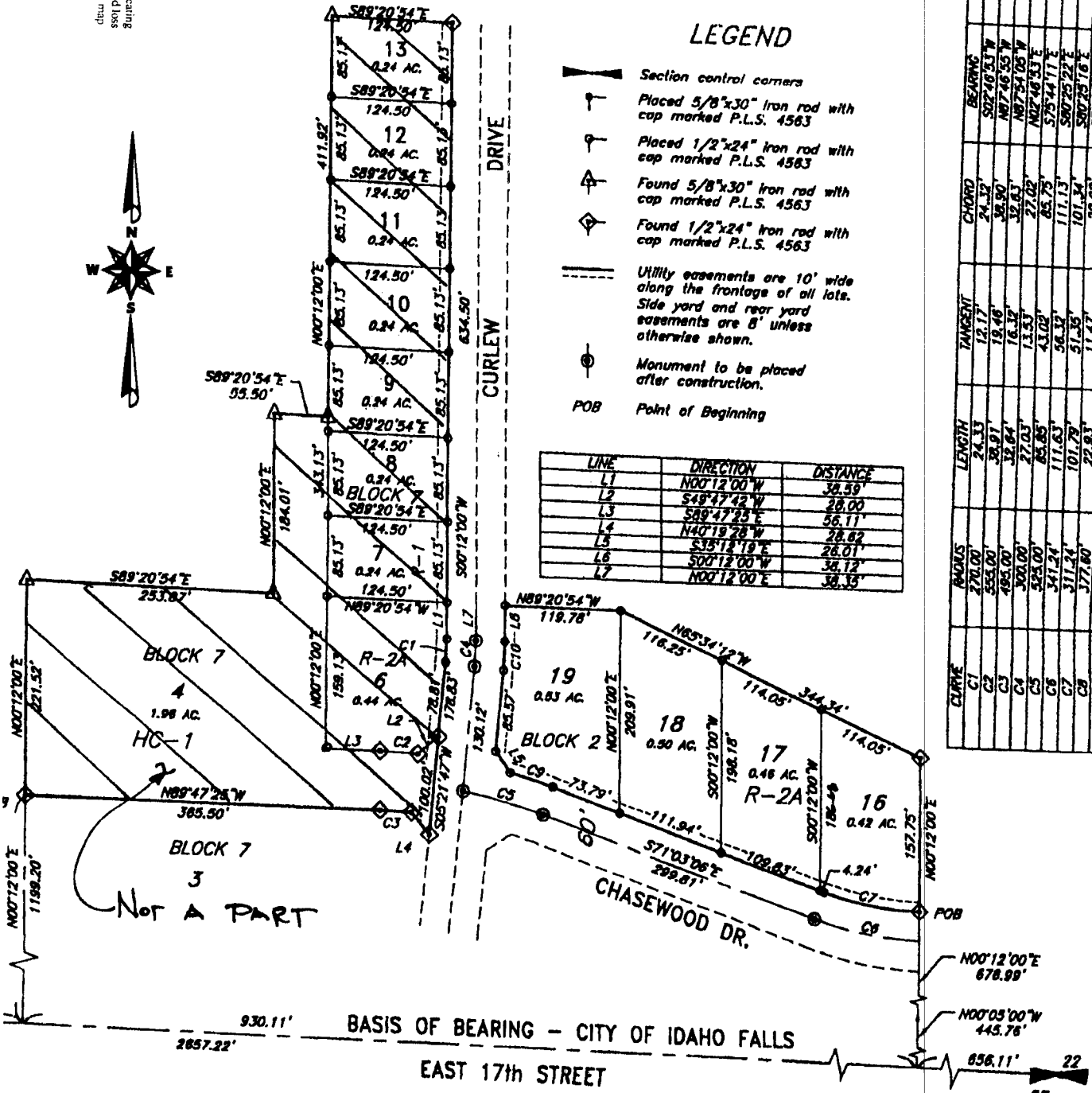
LOTS 1-3 BLOCK 2

AN ADDITION TO THE CITY OF AMMON, BONNEVILLE COUNTY, IDAHO
PART OF THE SECTION 22, T. 2N., R. 38E., B.M.

First American Title Company

Idaho Falls, Idaho 83404

This sketch is made solely for the purpose of assisting in locating the premises. The company assumes no liability for alleged loss or damage which may result from reliance on this map.



LEGEND

- Section control corners
- Placed 5/8"x30" iron rod with cap marked P.L.S. 4563
- Placed 1/2"x24" iron rod with cap marked P.L.S. 4563
- Found 5/8"x30" iron rod with cap marked P.L.S. 4563
- Found 1/2"x24" iron rod with cap marked P.L.S. 4563
- Utility easements are 10' wide along the frontage of all lots. Side yard and rear yard easements are 8' unless otherwise shown.
- Monument to be placed after construction.
- POB Point of Beginning

LINE	DIRECTION	DISTANCE
L1	N00°12'00"W	38.59'
L2	S48°47'42"W	28.00'
L3	S89°47'25"E	56.11'
L4	N40°19'28"E	28.82'
L5	S35°13'19"E	28.01'
L6	S00°12'00"W	38.12'
L7	N00°12'00"E	38.15'

CURVE	RADIUS	LENGTH	TANGENT	CHORD	BEARINGS	DELTA
C1	270.00'	24.33'	12.17'	24.33'	S02°48'53"W	05°09'47"
C2	555.00'	38.91'	18.46'	38.91'	N87°46'55"W	04°01'01"
C3	485.00'	32.84'	16.19'	32.83'	N87°54'05"W	03°46'09"
C4	300.00'	27.03'	13.53'	27.02'	N02°48'43"E	03°09'47"
C5	535.00'	45.85'	22.92'	45.75'	S75°44'11"E	09°22'09"
C6	341.24'	31.63'	15.81'	31.63'	S80°25'22"E	16°44'19"
C7	311.24'	28.93'	14.47'	28.93'	S80°25'16"E	16°44'19"
C8	377.60'	32.83'	16.42'	32.83'	S72°03'45"E	03°28'44"
C9	655.00'	45.74'	22.88'	45.72'	S72°03'45"E	04°43'18"
C10	330.00'	29.74'	14.88'	29.73'	S02°46'53"W	05°09'47"