

OAK RIDGE SHEET

DIVISION NO. 1

AN ADDITION TO THE CITY OF AMMON, BONNEVILLE COUNTY, IDAHO
PART OF THE SECTION 22, T. 2 N., R. 38 E., B.M.

LINE	DIRECTION	DISTANCE
L1	N49°47'41" E	28.00'
L2	S35°12'19" E	26.01'
L3	N00°12'00" E	38.59'
L4	N00°12'00" E	38.35'
L5	N00°12'00" E	38.12'
L6	S71°03'06" E	47.77'
L7	S00°06'58" E	68.52'
L8	N00°06'58" W	68.52'
L9	N00°06'58" W	68.52'
L10	S89°26'05" E	14.15'
L11	N00°12'35" E	40.00'
L12	N55°44'16" E	30.81'
L13	S40°19'29" E	28.62'
L14	S44°26'05" E	28.28'
L15	S45°33'55" W	28.28'
L16	S00°05'00" E	40.00'

CURVE	RADIUS	LENGTH	TANGENT	CHORD	BEARING	DELTA
C1	525.00'	85.85'	43.02'	85.75'	N85°06'20" W	09°22'09"
C2	525.00'	85.85'	43.02'	85.75'	S75°44'11" E	09°22'09"
C5	555.00'	38.91'	19.46'	38.90'	S87°46'55" E	04°01'01"
C6	555.00'	38.91'	19.46'	38.90'	S73°24'46" E	04°43'18"
C7	270.00'	45.74'	22.88'	45.72'	N02°46'53" E	05°09'47"
C8	300.00'	24.33'	12.17'	24.32'	N02°46'53" E	05°09'47"
C9	330.00'	29.74'	14.88'	29.73'	N02°46'53" E	05°09'47"
C10	341.24'	111.60'	56.30'	111.11'	S80°25'16" E	18°44'19"
C11	300.00'	155.31'	79.44'	153.58'	S14°15'58" E	29°39'45"
C12	311.24'	101.79'	51.35'	101.34'	S14°15'58" E	18°44'19"
C13	330.00'	170.84'	87.38'	168.94'	S14°15'58" E	29°39'45"
C14	270.00'	139.78'	71.49'	138.23'	N14°15'58" W	29°39'45"
C15	300.00'	151.75'	77.53'	150.13'	N14°36'24" W	28°58'52"
C16	270.00'	34.89'	17.47'	34.86'	N25°23'45" W	07°24'12"
C17	330.00'	66.86'	33.54'	66.74'	S23°17'36" E	11°36'29"
C18	270.00'	101.68'	51.45'	101.08'	S10°54'18" E	21°34'41"
C19	330.00'	100.06'	50.42'	99.68'	N08°48'10" W	17°22'23"
C20	500.00'	55.16'	27.61'	55.13'	S03°16'35" E	06°19'14"
C21	530.00'	58.47'	29.26'	58.44'	N03°16'35" W	06°19'14"
C22	470.00'	51.85'	25.95'	51.82'	N03°16'35" W	06°19'14"
C23	371.24'	121.41'	61.25'	120.87'	S80°25'15" E	18°44'19"
C24	270.00'	55.61'	27.90'	55.51'	N00°32'13" W	11°47'59"
C25	330.00'	67.96'	34.10'	67.84'	N00°32'13" W	11°47'59"
C26	300.00'	61.78'	31.00'	61.67'	N00°32'13" W	11°47'59"
C27	495.00'	24.50'	12.25'	24.49'	S72°28'11" E	02°50'08"
C28	495.00'	32.64'	16.32'	32.63'	N87°54'05" W	03°46'39"








First American Title Company

Idaho Falls, Idaho 83404

This sketch is made solely for the purpose of assisting in locating the premises. The company assumes no liability for alleged loss or damage which may result from reliance on this map.

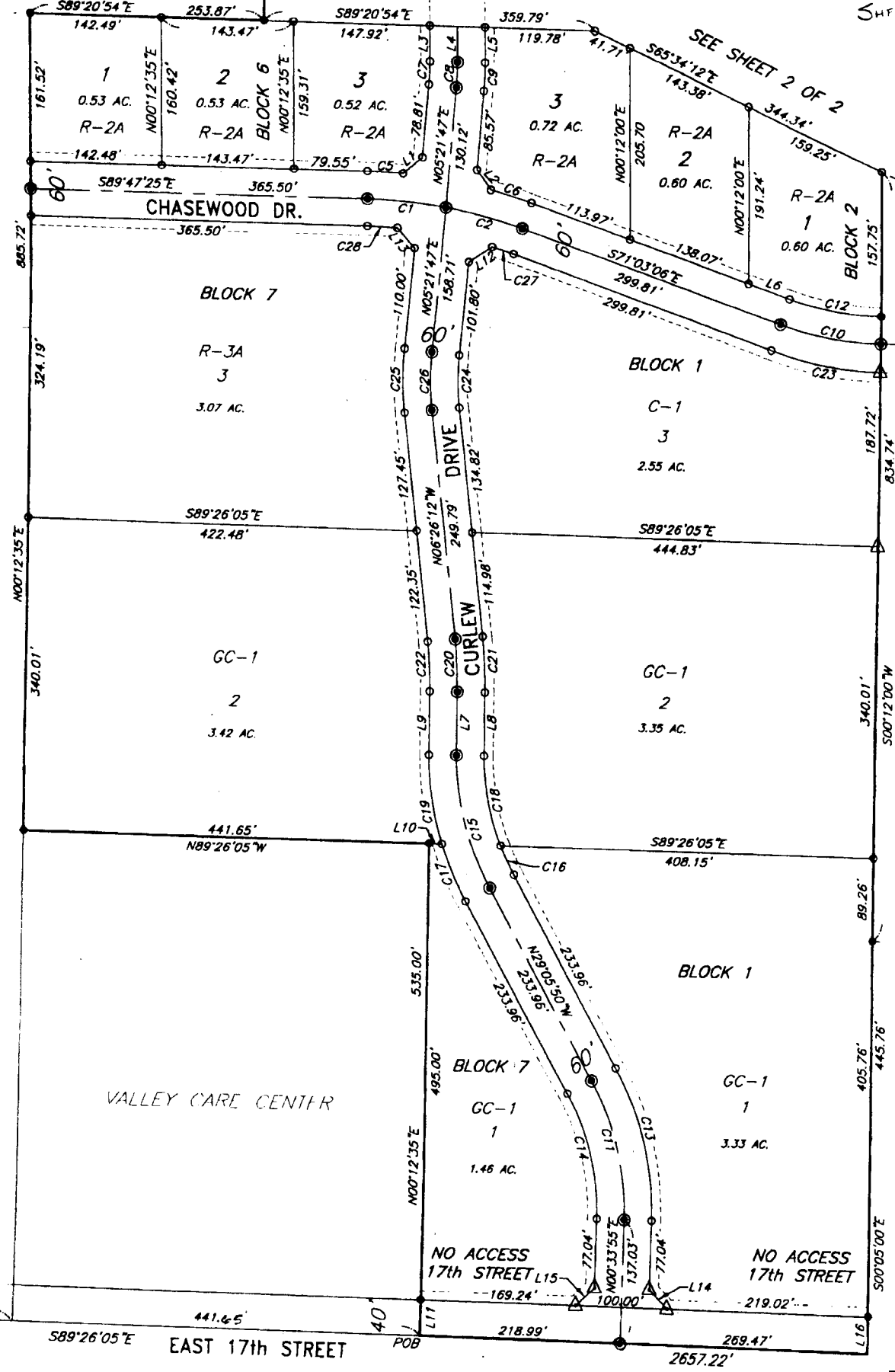


LEGEND

-  Section control corners
-  Found 1/2" Iron Rod
W/ Cap Marked LS 722
-  Placed 5/8"x30" iron rod with
cap marked P.L.S. 4563
-  Placed 1/2"x24" iron rod with
cap marked P.L.S. 4563
-  Utility easements are 10' wide
along the frontage of all lots.
Side yard and rear yard
easements are 8' unless
otherwise shown.
-  Monument to be placed
after construction.
-  POB Point of Beginning

SEE SHEET 2 OF 2

SHEET 1



SEE SHEET 2 OF 2
MATCH LINE

CHASEWOOD DR.



BASIS OF BEARING - CITY OF IDAHO FALLS

First American Title Company

Idaho Falls, Idaho 83404

This sketch is made solely for the purpose of assisting in locating the premises. The company assumes no liability for alleged loss or damage which may result from reliance on this map.

