

OAK RIDGE

DIVISION NO. 1

AN ADDITION TO THE CITY OF AMMON, BONNEVILLE COUNTY, IDAHO
PART OF THE SECTION 22, T. 2 N., R. 38 E., B.M.
SHEET 2

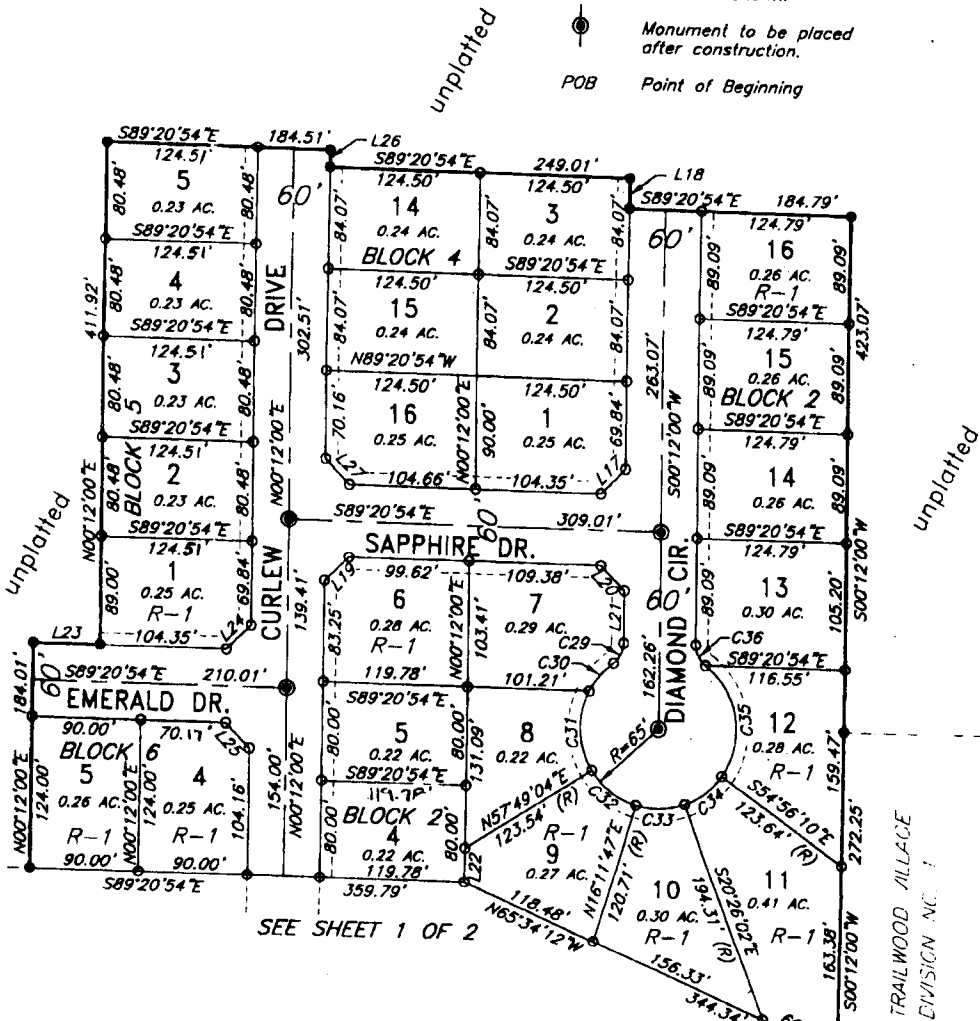


LEGEND

- Section control corners
- Found 1/2" IR W/ Cap Marked ILS 722
- Placed 5/8"x30" iron rod with cap marked P.L.S. 4563
- Placed 1/2"x24" iron rod with cap marked P.L.S. 4563
- Utility easements are 10' wide along the frontage of all lots. Side yard and rear yard easements are 8' unless otherwise shown.
- Monument to be placed after construction.
- POB Point of Beginning

LINE	DIRECTION	DISTANCE
L17	N45°25'33"E	28.40'
L18	S00°12'00"W	25.07'
L19	N45°25'33"E	28.40'
L20	S44°34'27"E	28.17'
L21	S00°12'00"W	43.92'
L22	S00°12'00"W	28.92'
L23	S89°20'54"E	55.50'
L24	N45°25'33"E	28.40'
L25	S44°34'27"E	28.17'
L26	S00°12'00"W	14.37'
L27	S44°34'27"E	28.17'

CURVE	RADIUS	LENGTH	TANGENT	CHORD	BEARING	DELTA
C29	20.00'	18.84'	10.18'	18.15'	S27°11'03"W	53°58'05"
C30	65.00'	30.82'	15.70'	30.53'	S40°35'10"W	27°09'50"
C31	65.00'	67.14'	36.91'	64.20'	S02°35'21"E	59°11'11"
C32	65.00'	47.22'	24.71'	46.19'	S52°59'34"E	41°37'17"
C33	65.00'	41.86'	21.52'	40.85'	N87°52'53"E	36°37'49"
C34	65.00'	39.14'	20.18'	38.55'	N52°18'54"E	34°30'08"
C35	65.00'	100.78'	63.69'	90.98'	N09°21'08"W	88°49'55"
C36	20.00'	18.84'	10.18'	18.15'	N26°47'03"W	53°58'05"



BEARING	DELTA
S27°11'03"W	53°58'05"
S40°35'10"W	27°09'50"
S02°35'21"E	59°11'11"
S52°59'34"E	41°37'17"
N87°52'53"E	36°37'49"
N52°18'54"E	34°30'08"
N09°21'08"W	88°49'55"
N26°47'03"W	53°58'05"

LINE	DIRECTION	DISTANCE
L17	N45°25'33"E	28.40'
L18	S00°12'00"W	25.07'
L19	N45°25'33"E	28.40'
L20	S44°34'27"E	28.17'
L21	S00°12'00"W	28.17'
L22	S00°12'00"W	43.92'
L23	S00°12'00"W	28.92'
L24	S89°20'54"E	55.50'
L25	N45°25'33"E	28.40'
L26	S44°34'27"E	28.17'

First American Title Company
Idaho Falls, Idaho 83404

This sketch is made solely for the purpose of assisting in locating the premises. The company assumes no liability for alleged loss or damage which may result from reliance on this map.

