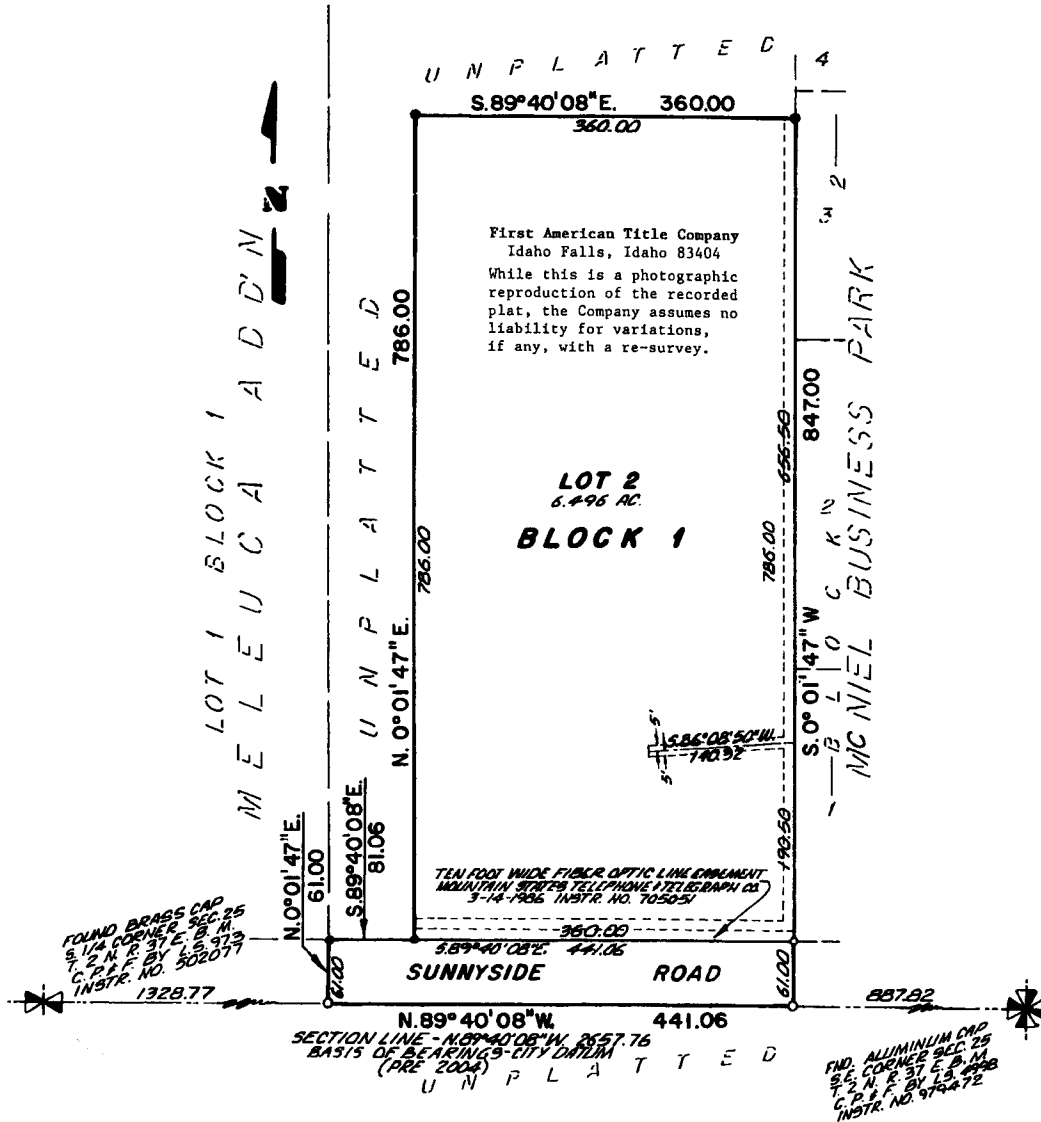


# OLD FAITHFUL BEVERAGE COMPANY DIVISION NO. 2

**AN ADDITION TO THE CITY OF IDAHO FALLS, BONNEVILLE COUNTY, IDAHO  
BEING PART OF THE S.E. 1/4 S.E. 1/4 SECTION 25 T. 2 N. R. 37 E., B.M.  
WHICH INCLUDES A REPLAT OF DIVISION NO. 1**



### LEGEND & NOTES

- 5/8" x 30" Steel rebar set with plastic cap stamped L.S.8795
- 1/2" x 24" Steel rebar set with plastic cap stamped L.S.8795
- 5/8" Steel rebar found with caps stamped L.S.8795
- 1/2" Steel rebar found with caps stamped L.S.8795

Public Utility Easements are ten feet wide unless noted otherwise, and hereby granted to the public.