

OLD FAITHFUL BEVERAGE COMPANY DIVISION NO. 1 TO THE CITY OF IDAHO FALLS, BONNEVILLE COUNTY, IDAHO PART OF THE E. 1/2 S.E. 1/4 SECTION 25 T. 2 N. R. 37 E. B. M.

First American Title Company
Idaho Falls, Idaho 83404

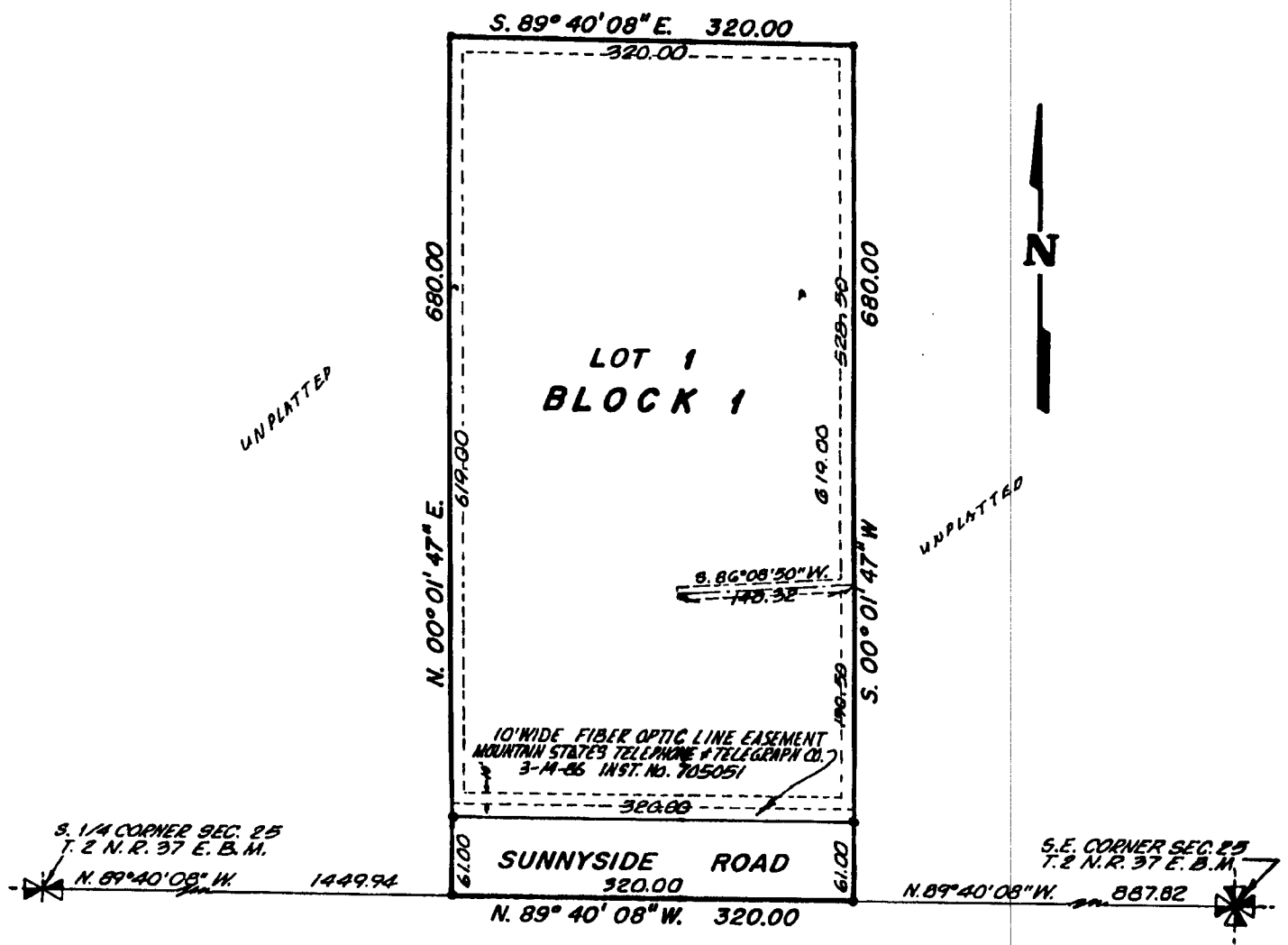
This sketch is made solely for the purpose of assisting in locating the premises. The company assumes no liability for alleged loss or damage which may result from reliance on this map.



UNPLATTED

UNPLATTED

UNPLATTED



- DENOTES IRON RODS
- UTILITY EASEMENTS ARE 10 FEET WIDE UNLESS OTHERWISE NOTED