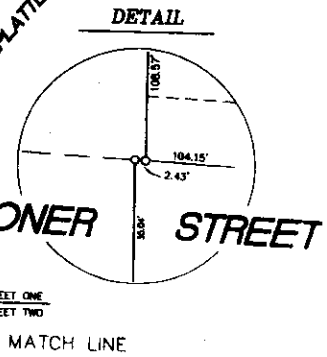
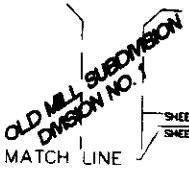
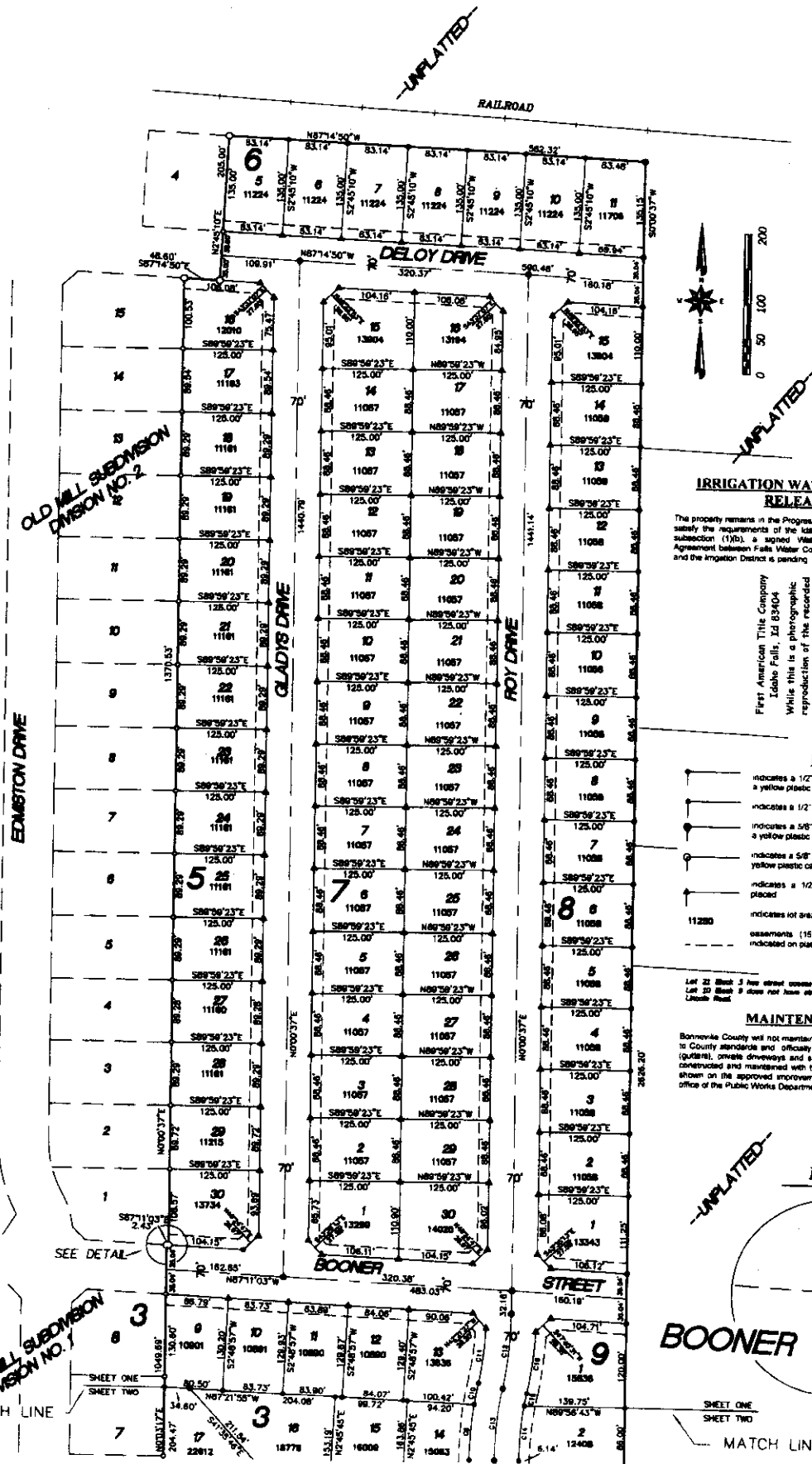


OLD MILL SUBDIVISION DIVISION NO. 3 BONNEVILLE COUNTY, IDAHO

PART OF THE SE 1/4
OF SEC. 11, T. 2 N., R. 36 E.B.M.



IRRIGATION WATER RIGHTS RELEASE

The property remains in the Progressive Irrigation District and to satisfy the requirements of the Idaho Code Section 31-3805 subsection (1)(b), a signed Water Use and Assessment Agreement between Falls Water Company Inc. the Developer and the Irrigation District is pending.

First American Title Company
Latah Falls, Id 83404
While this is a photographic reproduction of the recorded plat, the company assumes no liability for variations, if any, with a re-survey.

NOTES

- indicates a 1/2" x 24" iron rod placed with a yellow plastic cap marked L S 722
 - indicates a 1/2" x 24" iron rod found
 - indicates a 5/8" x 30" iron rod placed with a yellow plastic cap marked L S 722
 - indicates a 5/8" x 30" iron rod found with a yellow plastic cap marked L S 722
 - indicates a 1/2" x 24" iron rod not yet placed
 - 11280 indicates lot area in square feet
 - assessments 15' wide unless otherwise indicated on plat
- Lot 22 Block J has street access from Lincoln Road
Lot 20 Block 9 does not have street access from Lincoln Road

MAINTENANCE

Bonneville County will not maintain the roads until constructed to County standards and officially accepted. Drainage ditches (gutters), private driveways and sidewalk approaches will be constructed and maintained with the correct cross-section as shown on the approved improvement drawings on file in the office of the Public Works Department.