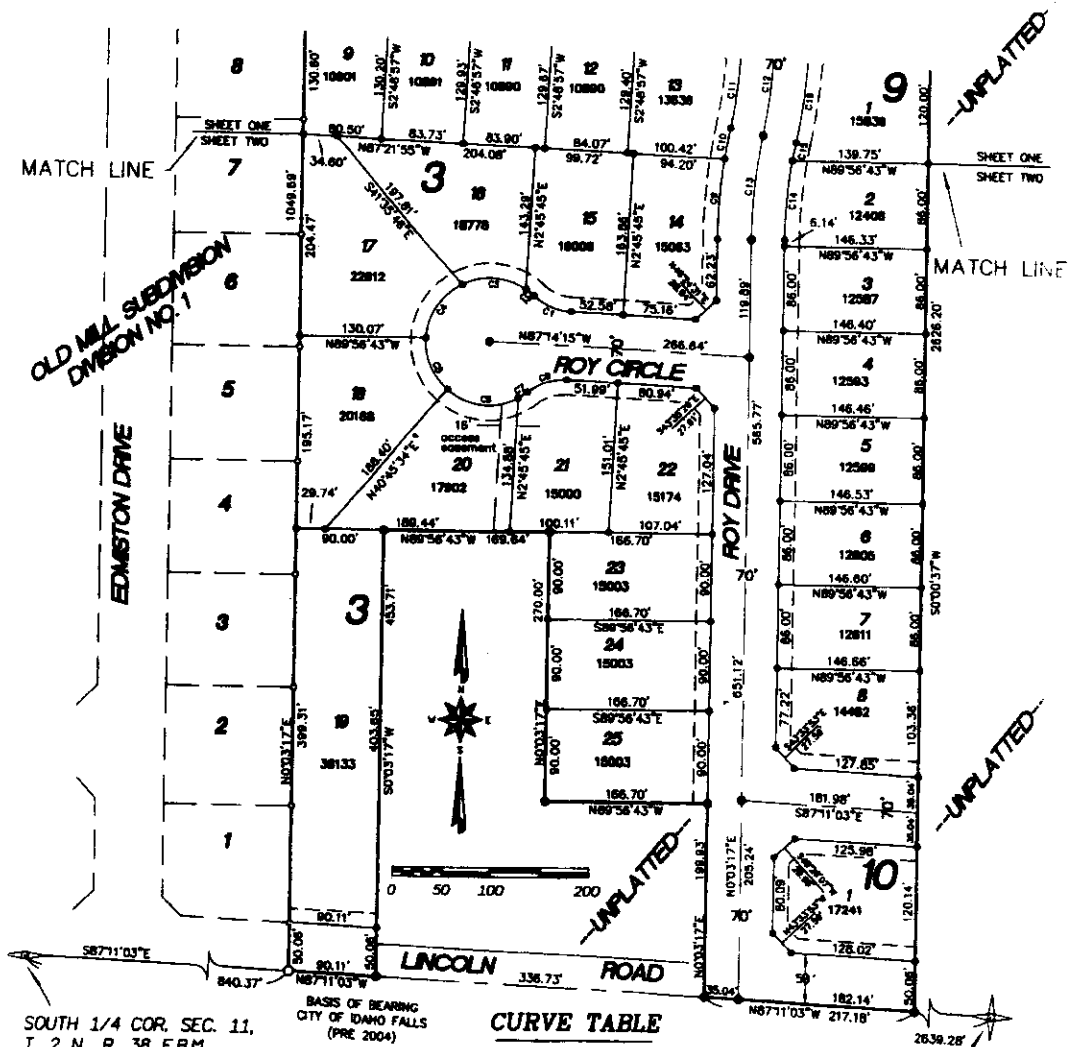


# OLD MILL SUBDIVISION

## DIVISION NO. 3 BONNEVILLE COUNTY, IDAHO

PART OF THE SE 1/4  
OF SEC. 11, T. 2 N., R. 38 E.B.M.



SOUTH 1/4 COR. SEC. 11,  
T. 2 N., R. 38 E.B.M.  
(INST. NO. 823769)

BASIS OF BEARING  
CITY OF IDAHO FALLS  
(PRE 2004)

**CURVE TABLE**

NUM	DELTA	ARC	RADIUS	BEARING	DISTANCE
C1	40°32'09"	42.45'	60.00'	S66°58'11"E	41.57'
C2	8°33'51"	10.09'	65.00'	N51°09'02"W	10.08'
C3	60°49'09"	69.00'	65.00'	N66°00'32"W	65.80'
C4	60°49'09"	69.00'	65.00'	S33°10'19"W	65.80'
C5	52°00'11"	58.00'	65.00'	S23°14'20"E	56.99'
C6	68°44'53"	77.99'	65.00'	S83°36'53"E	73.40'
C7	9°47'05"	11.10'	65.00'	N57°07'08"E	11.09'
C8	40°32'09"	42.45'	60.00'	S72°29'41"W	41.57'
C9	8°15'18"	81.06'	562.56'	S4°10'58"W	80.99'
C10	3°15'01"	31.91'	562.56'	S9°56'05"W	31.91'
C11	9°05'27"	77.83'	480.54'	N7°00'52"E	77.75'
C12	11°32'58"	105.94'	525.54'	N5°47'08"E	105.76'
C13	11°30'19"	105.94'	527.56'	S5°48'26"W	105.78'
C14	9°19'51"	80.22'	482.56'	S4°43'12"W	80.13'
C15	2°10'28"	18.69'	482.56'	S10°28'22"W	18.69'
C16	9°01'31"	88.30'	560.54'	N7°02'50"E	88.20'

First American Title Company  
Idaho Falls, Id 83404  
While this is a photographic  
reproduction of the recorded  
plat, the company assumes  
no liability for variations,  
if any, with a re-survey.

S.E. COR. SEC. 11,  
T. 2 N., R. 38 E.B.M.  
(INST. NO. 823768)