

# PACKER ADDITION

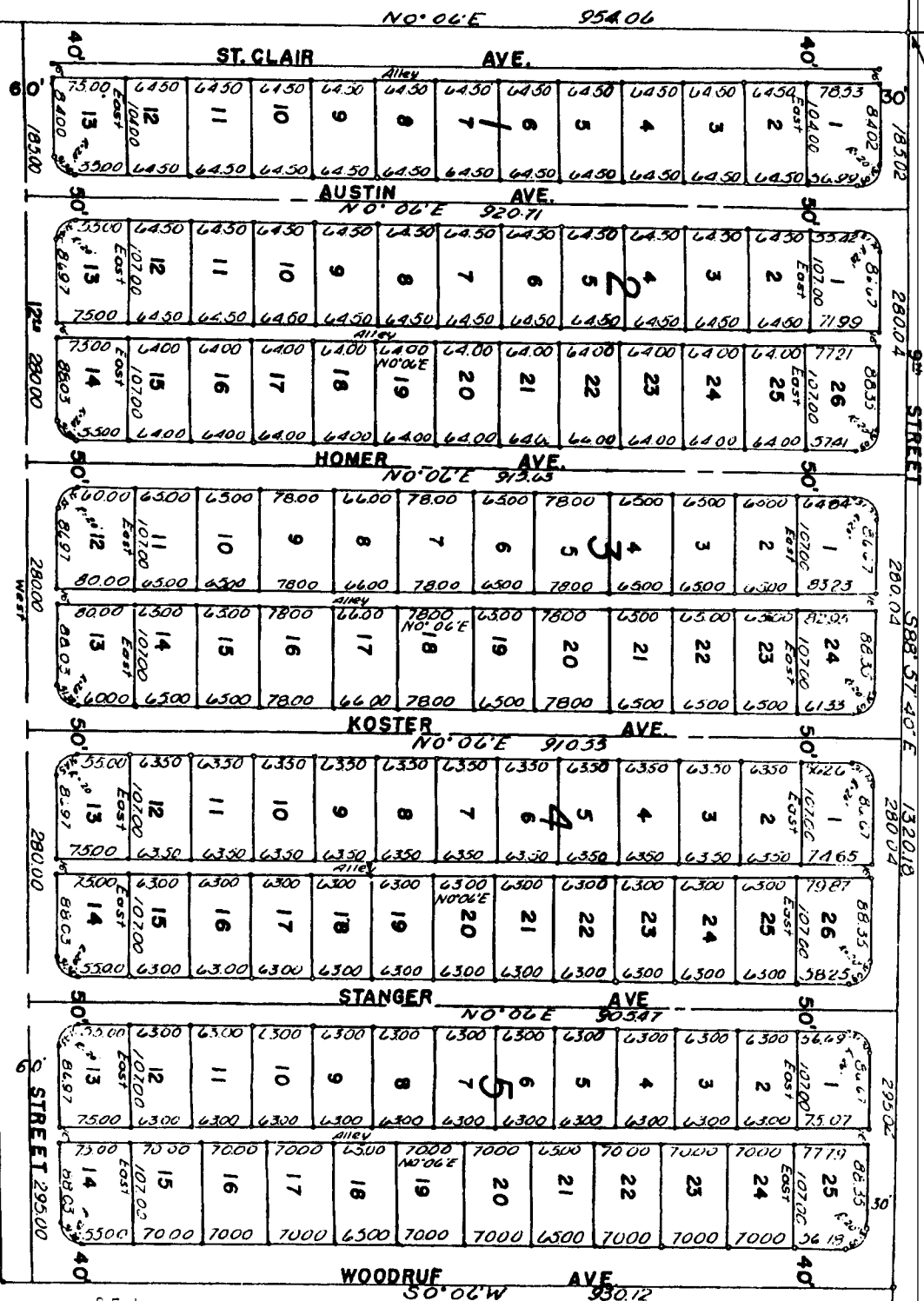
DIVISION NO. 1

TO

THE CITY OF IDAHO FALLS IDAHO  
Part of

N 1/2 OF SW 1/4 OF Sec. 21 T2N., R38E.B.M.

NW CORNER SW 1/4 SECTION 21  
T2N., R38E.B.M.



This sketch is made solely for the purpose of assisting in locating the premises. The company assumes no liability for alleged loss or damage which may result from reliance on this map.



First American Title Company  
Idaho Falls, Idaho 83404

Small circles designate iron rods.

Section Line from road.

West 1320.00

West 2800.00

West 2950.00

STREET

STREET

STREET

STREET

STREET