

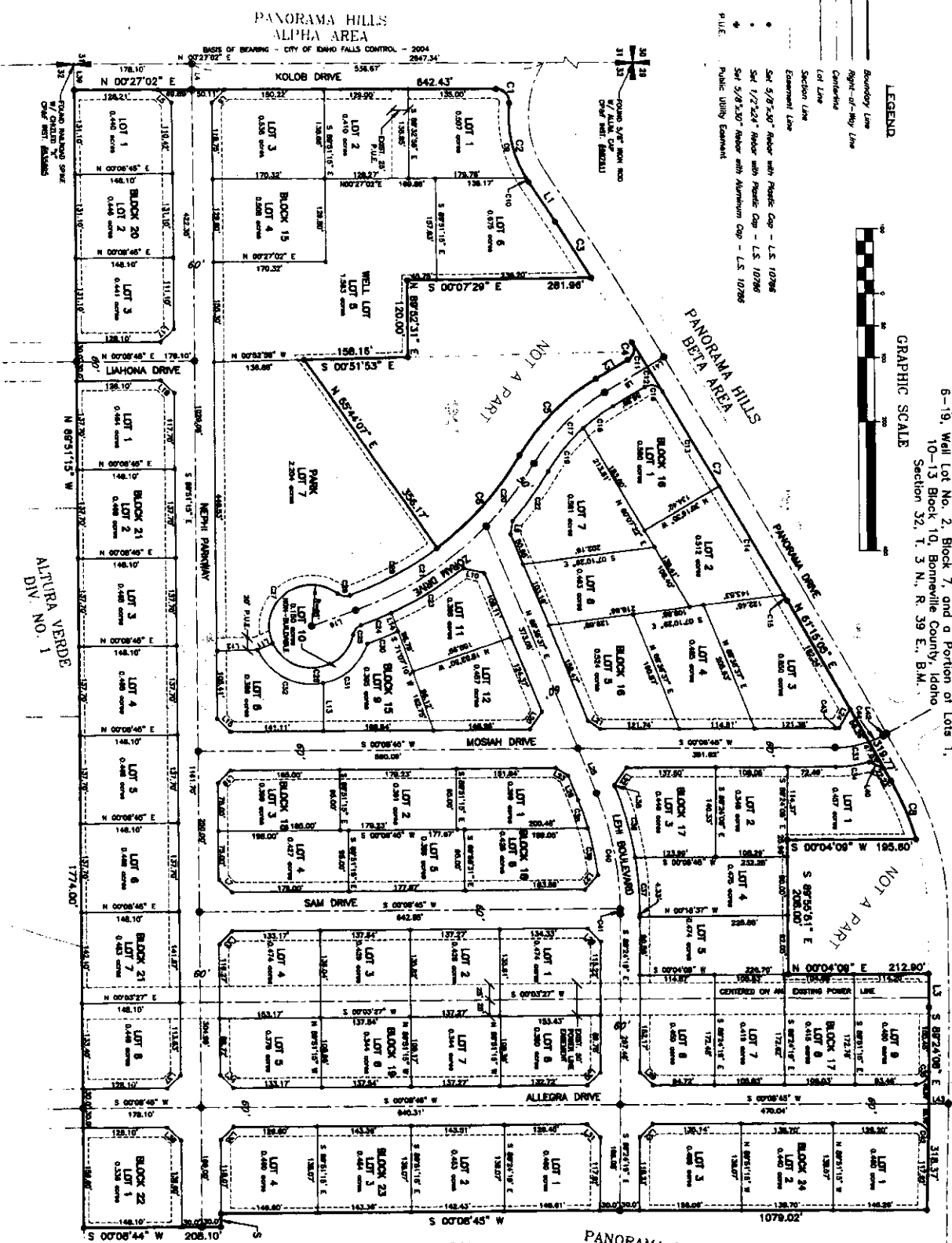
2ND AMENDED PANORAMA HILLS - BETA AREA

Being a Replat of Panorama Hills - Beta Area, Lots 1-3, 6-19, Well Lot No. 2, Block 7, and a Portion of Lots 1, 10-13, Block 10, Bonneville County, Idaho
Section 32, T. 3 N., R. 39 E., B.M.

GRAPHIC SCALE



- LEGEND**
- Boundary Line
 - Right-of-Way Line
 - Centerline
 - Lot Line
 - Section Line
 - Estimated Line
 - Set 5/8" x 30" Meter with Plastic Cap - L.S. 10796
 - Set 1/2" x 24" Meter with Plastic Cap - L.S. 10796
 - Set 5/8" x 30" Meter with Aluminum Cap - L.S. 10796
 - Public Utility Easement



ALTURA VERDE
DIV. NO. 1

- GENERAL**
1. THESE EASEMENTS, RIGHTS, AND INTERESTS ARE HEREBY RESERVED TO THE CITY OF IDAHO FALLS AND THE CITY OF PANORAMA HILLS.
 2. THE CITY OF IDAHO FALLS AND THE CITY OF PANORAMA HILLS ARE HEREBY GRANTED THE RIGHT TO USE ANY OF THE EASEMENTS, RIGHTS, AND INTERESTS FOR THE PURPOSES OF THE CITY OF IDAHO FALLS AND THE CITY OF PANORAMA HILLS.
 3. THESE EASEMENTS, RIGHTS, AND INTERESTS ARE HEREBY GRANTED TO THE CITY OF IDAHO FALLS AND THE CITY OF PANORAMA HILLS FOR THE PURPOSES OF THE CITY OF IDAHO FALLS AND THE CITY OF PANORAMA HILLS.
 4. THESE EASEMENTS, RIGHTS, AND INTERESTS ARE HEREBY GRANTED TO THE CITY OF IDAHO FALLS AND THE CITY OF PANORAMA HILLS FOR THE PURPOSES OF THE CITY OF IDAHO FALLS AND THE CITY OF PANORAMA HILLS.
 5. THESE EASEMENTS, RIGHTS, AND INTERESTS ARE HEREBY GRANTED TO THE CITY OF IDAHO FALLS AND THE CITY OF PANORAMA HILLS FOR THE PURPOSES OF THE CITY OF IDAHO FALLS AND THE CITY OF PANORAMA HILLS.
 6. THESE EASEMENTS, RIGHTS, AND INTERESTS ARE HEREBY GRANTED TO THE CITY OF IDAHO FALLS AND THE CITY OF PANORAMA HILLS FOR THE PURPOSES OF THE CITY OF IDAHO FALLS AND THE CITY OF PANORAMA HILLS.
 7. THESE EASEMENTS, RIGHTS, AND INTERESTS ARE HEREBY GRANTED TO THE CITY OF IDAHO FALLS AND THE CITY OF PANORAMA HILLS FOR THE PURPOSES OF THE CITY OF IDAHO FALLS AND THE CITY OF PANORAMA HILLS.

First American
Idaho Falls
While this is a
reproduction of
plat, the compiler
has no liability for
it, with a

PANORAMA HILLS
ALPHA AREA

PANORAMA HILLS
BETA AREA