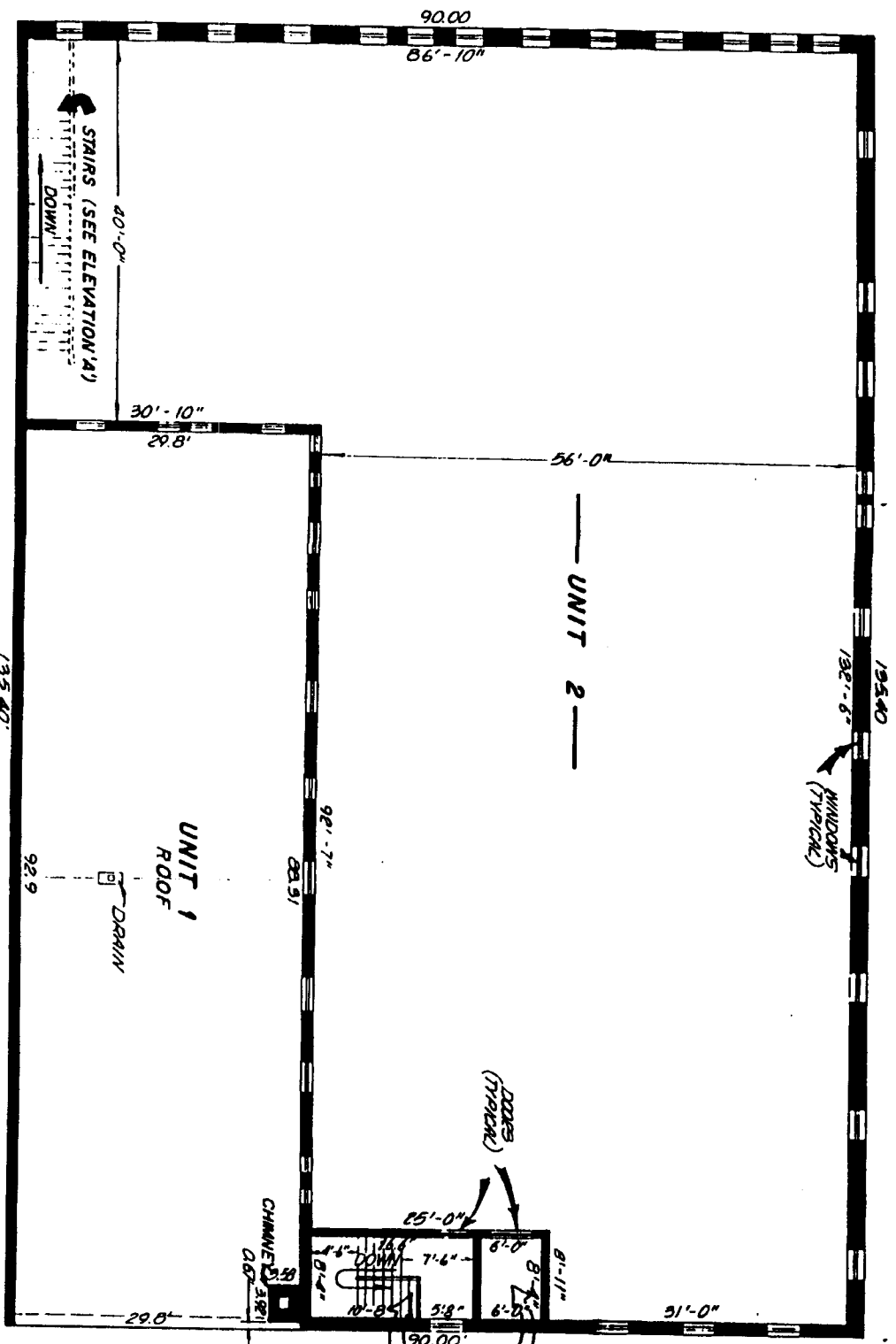


PARK & "B" PLAZA
 AN IDAHO CONDOMINIUM PROJECT
 CITY OF IDAHO FALLS, BONNEVILLE COUNTY, IDAHO



SECOND FLOOR

FREIGHT
 ELEVATOR
 UNIT 1
 SEE ELEVATION "B"
 STAIR CASE
 COMMON AREA

First American Tile Company
 Idaho Falls, Idaho 83402
 This sketch is made solely for the purpose of assisting in locating
 the premises. The company assumes no liability for alleged loss
 or damage which may result from reliance on this map

