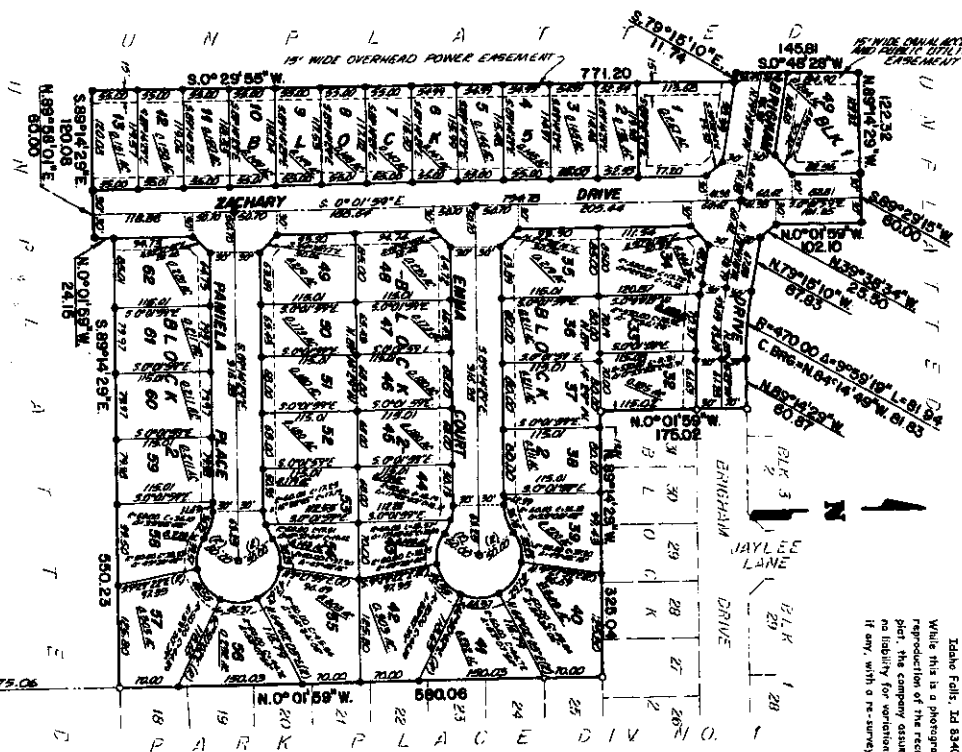


**PARK PLACE, DIVISION NO. 2**  
**AN ADDITION TO THE CITY OF IDAHO FALLS, BONNEVILLE COUNTY, IDAHO**  
**BEING PART OF THE S.E. 1/4 OF SECTION 1 T. 1 N. R. 37 E., B. M.**

First American Title Company  
 Idaho Falls, ID 83404  
 While this is a photostatic  
 reproduction of the recorded  
 plat, the company assumes  
 no liability for variations,  
 if any, with a resurvey.



**LEGEND & NOTES**

- 5/8" x 1/8" Steel plate set with platonic iron stamped U.S. 8785
  - 1/2" x 3/4" Steel plate set with platonic iron stamped U.S. 8785
  - 5/8" Steel plate found with platonic iron stamped U.S. 8785
  - 1/2" x 3/4" Steel plate found with platonic iron stamped U.S. 8785
4. A survey that with Public Utility Association is hereby granted along the road (indicated on this plat) to be used for public utility purposes on right of way and subject to the following:

ROUND MOUNTAIN CO. CO.  
 1714 E 37 S. B. M.  
 51° 51' 13" E 135.74' S 58° 40' 00" W

1714 E 37 S. B. M.  
 51° 51' 13" E 135.74' S 58° 40' 00" W

ROUND MOUNTAIN CO. CO.  
 1714 E 37 S. B. M.  
 51° 51' 13" E 135.74' S 58° 40' 00" W