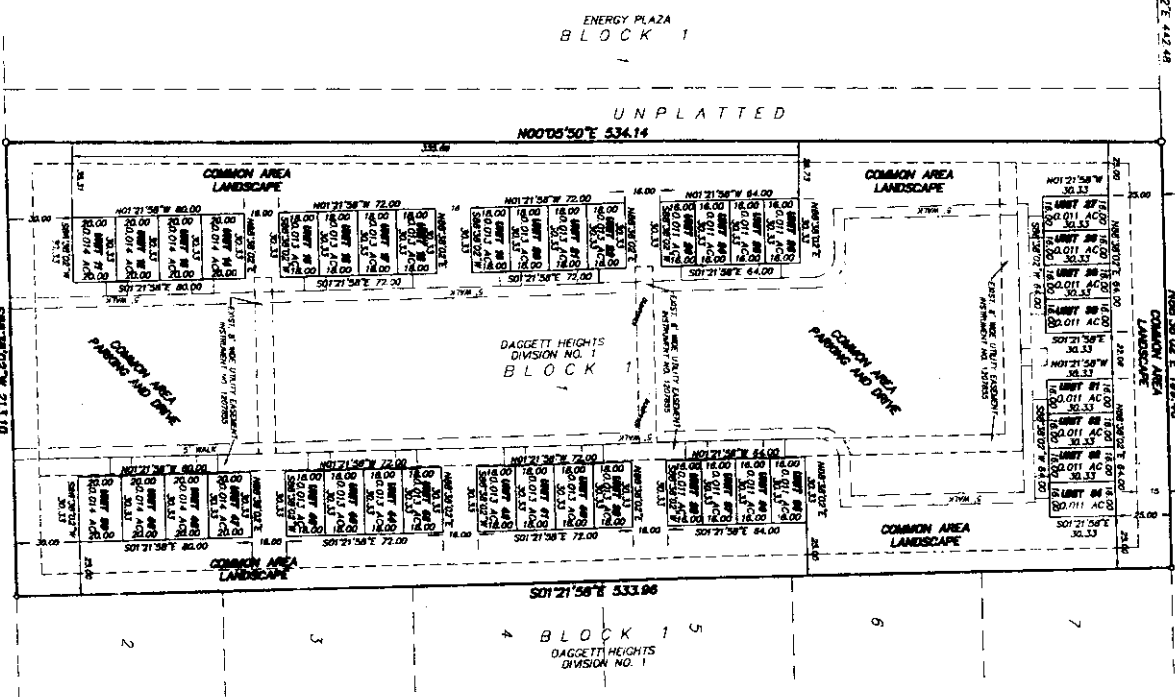


PLANNING DEPARTMENT
 1200 S. 300 E. Rm. 100
 P.O. Box 15000
 Boise, Idaho 83726

SECTION LINE (BASIS OF BEARING)
 CITY OF DAHO FALLS DATUM 2004
 N00°05'50"E 2637.71'
 417.50' 2220.21'

PARK POINTE
 PURSUANT TO DAHO CODE TITLE 65, CHAPTER 16
 CITY OF DAHO FALLS, BONNEVILLE COUNTY, IDAHO
 BEING A REPLAT OF UNIVERSITY PLACE TOWNHOUSES



ENERGY PLAZA
 BLOCK 1

UNPLATTED
 N00°05'50"E 534.14'

DAUGGETT HEIGHTS
 DIVISION NO. 1
 BLOCK 1

DAUGGETT HEIGHTS
 DIVISION NO. 1
 BLOCK 1

First American Title Company
 Idaho Falls, ID 83404
 While this is a photographic
 reproduction of the recorded
 plat, the company assumes
 no liability for variations,
 if any, with a re-survey.

LEGEND & NOTES

- 50' Show the lot found with public cases shown U.S. 6756
- 12' Show the lot found with public cases shown U.S. 6756
- A line for wide Public Utility Easement is hereby reserved along all road frontages within each lot. All other public utility easements are per the site street record drawings.
- Parking, walk, and landscaped areas are common areas.

Each unit consists of the entire property enclosed by the Unit Boundary lines including the land and all improvements thereon, but subject to the covenants, conditions, and restrictions, and easements set forth in the Declaration of Condominium, Conditions and Restrictions of Park Pointe.

Building corners and unit corners occupy the same geographical location, no monument set.

For District 7 Health Department approval see Dauggett Heights, Division No. 1 plat received April 19, 2005 under instrument No. 178358.

The project consists of 40 units and a common area and shows for 82 parking stalls.