

PARK ADDITION NO. 2  
 CITY OF IRWIN, IDAHO  
 BONNEVILLE COUNTY  
 A PORTION OF SW/4SE 1/4, SECTION 26,  
 TOWNSHIP 1 NORTH, RANGE 40 EAST,  
 BOISE, MERIDIAN

First American Title Company

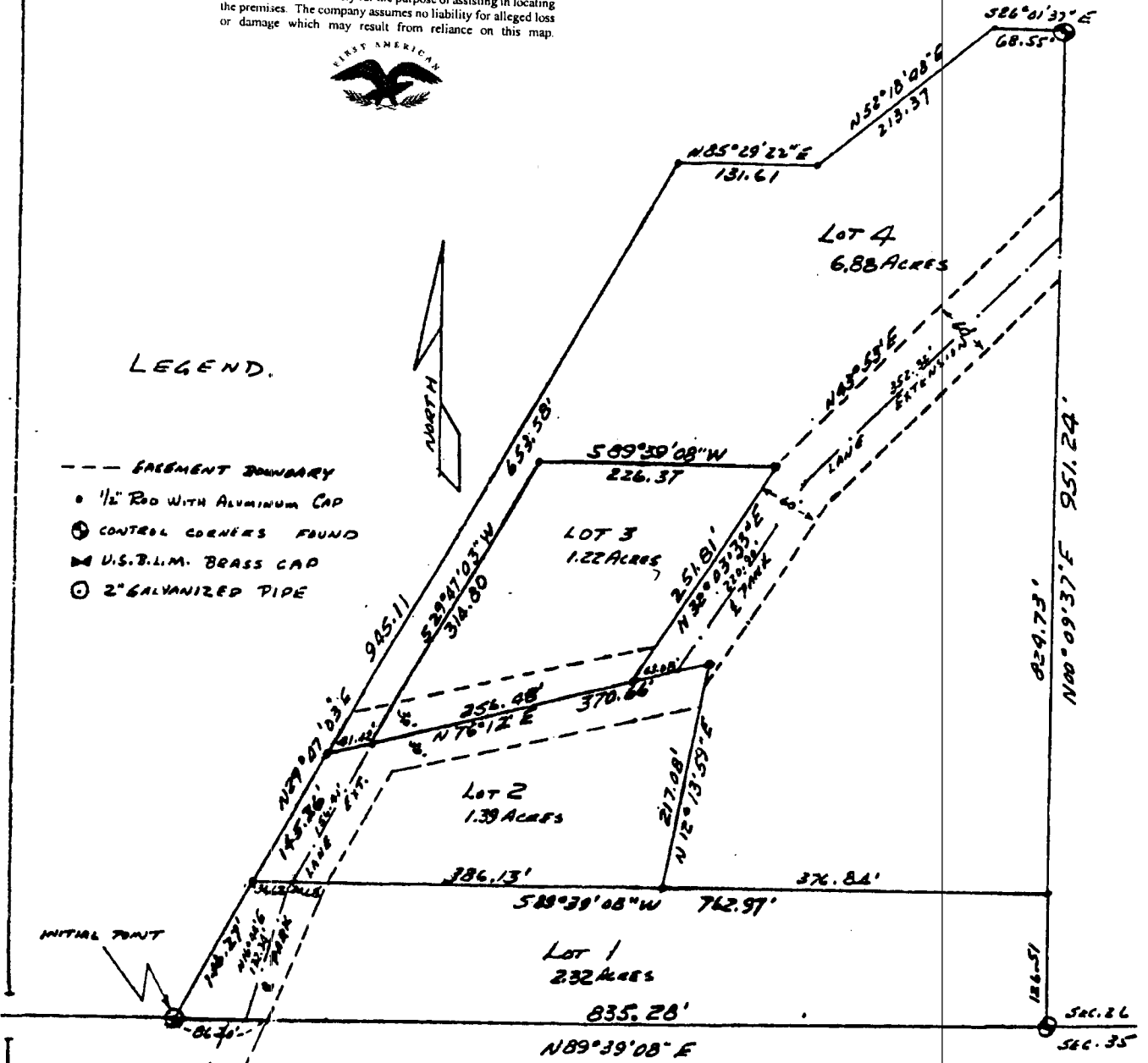
Idaho Falls, Idaho 83404

This sketch is made solely for the purpose of assisting in locating the premises. The company assumes no liability for alleged loss or damage which may result from reliance on this map.



LEGEND.

- EASEMENT BOUNDARY
- 1/2" ROD WITH ALUMINUM CAP
- ⊕ CONTROL CORNERS FOUND
- ⊞ U.S.B.L.M. BRASS CAP
- ⊙ 2" GALVANIZED PIPE



PARK ADDITION NO. 2  
 to the  
 CITY OF IRWIN  
 IDAHO

BEARING BASE - SECTION LINE BETWEEN  
 SECTION 26 AND SECTION 35 TAKEN  
 AS N89°39'08"E FROM PARK LANE  
 ADDITION SUBDIVISION PLAT

