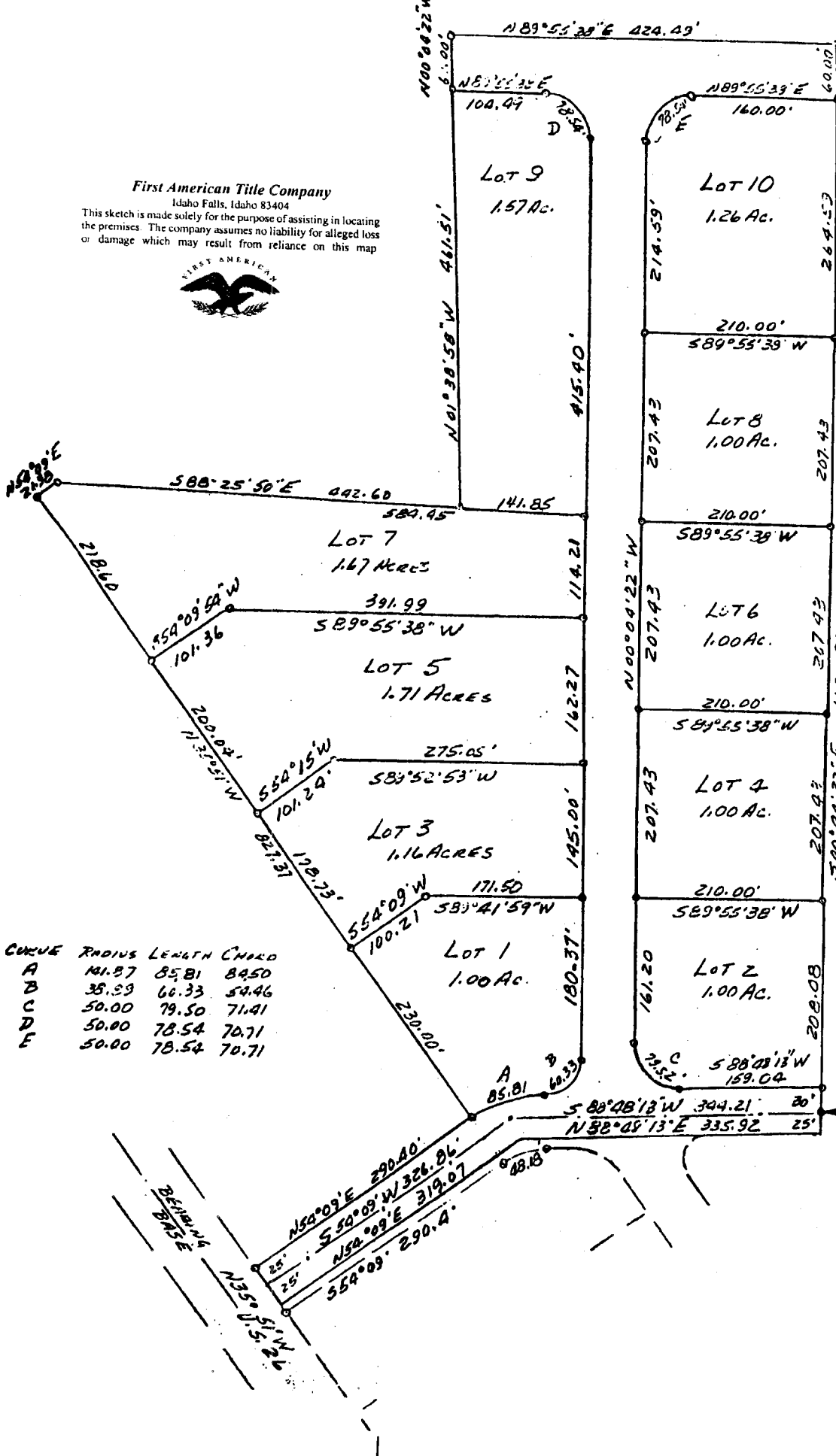


First American Title Company
 Idaho Falls, Idaho 83404
 This sketch is made solely for the purpose of assisting in locating the premises. The company assumes no liability for alleged loss or damage which may result from reliance on this map



PARK SUBDIVISION NO. 3
 IN SECTION 35
 TOWNSHIP 1 NORTH,
 RANGE 44 EAST,
 BOISE MERIDIAN, IDAHO
 LANDS IN
 CITY OF IRWIN,
 IDAHO

Iron Rod/Plastic Tag
 BEARING BASE
 E. U.S. HIGHWAY 26
 N 35° 51' W



CURVE	RADIUS	LENGTH	CHORD
A	141.87	85.81	84.50
B	35.39	66.33	54.46
C	50.00	79.50	71.41
D	50.00	78.54	70.71
E	50.00	78.54	70.71

