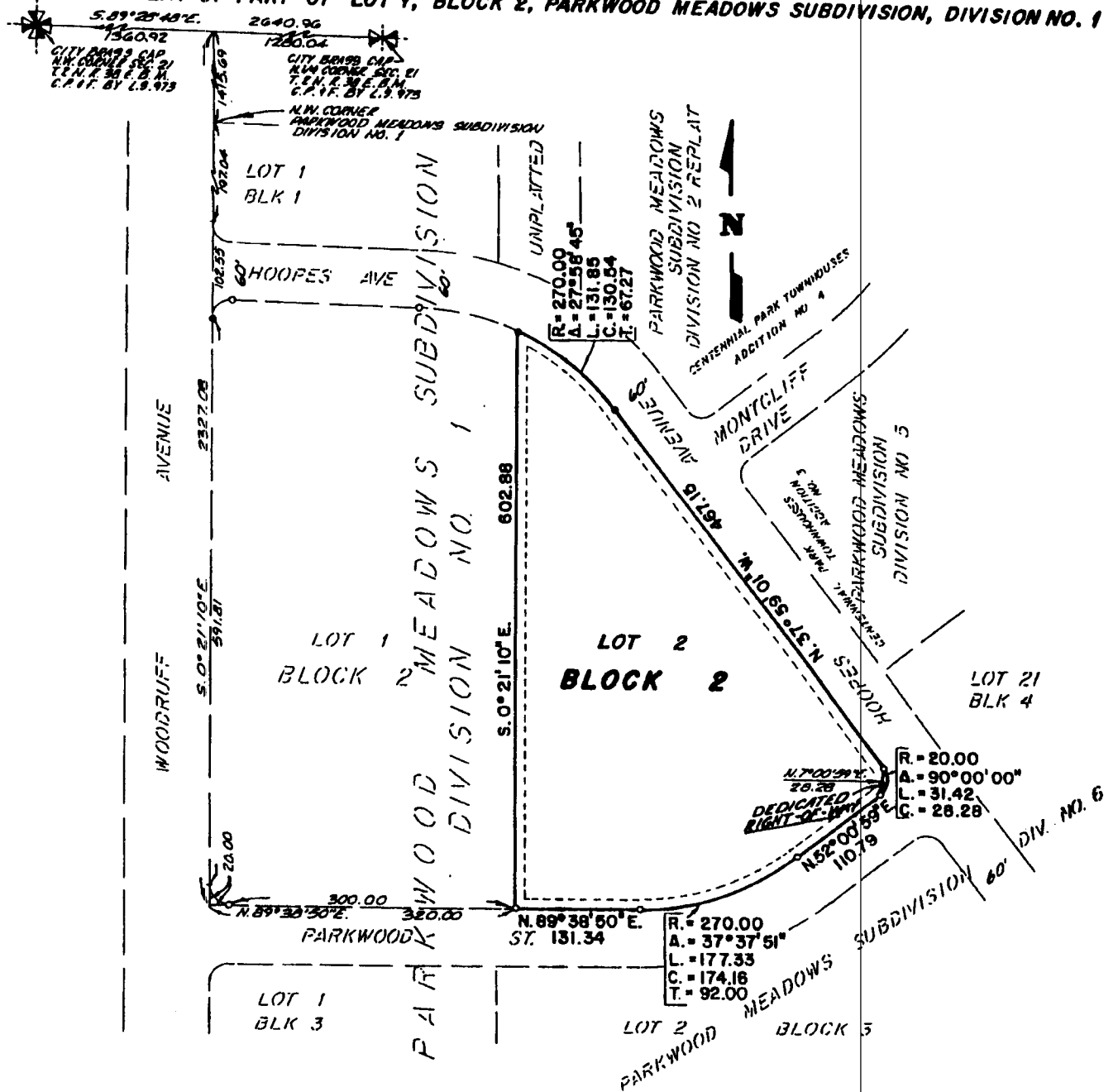


FIRST AMENDED PLAT OF PARKWOOD MEADOWS SUBDIVISION DIVISION NO. 1

TO THE CITY OF IDAHO FALLS, BONNEVILLE COUNTY, IDAHO
LYING IN THE N.W. 1/4 OF SECTION 21, T. 2 N., R. 38 E., B. M.
BEING A REPLAT OF PART OF LOT 1, BLOCK 2, PARKWOOD MEADOWS SUBDIVISION, DIVISION NO. 1



First American Title Company
Idaho Falls, Idaho 83404
This sketch is made solely for the purpose of assisting in locating the premises. The company assumes no liability for alleged loss or damage which may result from reliance on this map.



NOTES

- DELETES IRON RODS FOUND WITH PLASTIC CAPS STAMPED L.S. 760
 - DEMOTES 5.6\"/>
- UTILITY EASEMENTS ARE TEN FEET WIDE UNLESS OTHERWISE NOTED.