

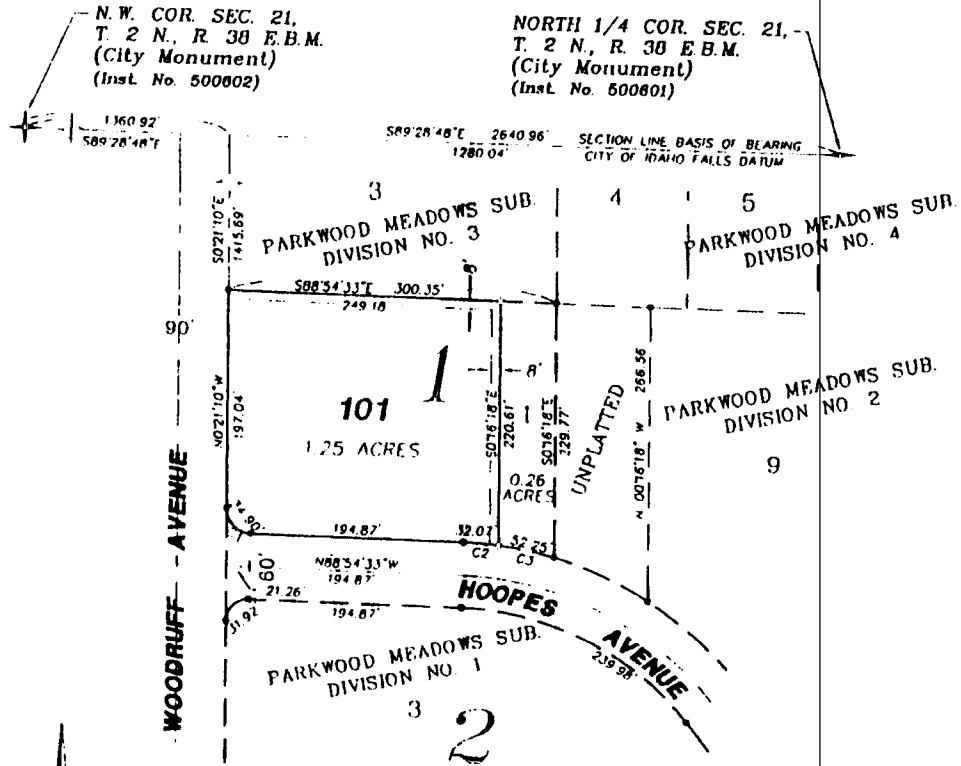
# THE SECOND AMENDED PLAT OF PARKWOOD MEADOWS SUBDIVISION

## DIVISION NO. 1

TO THE CITY OF IDAHO FALLS, IDAHO  
BEING A REPLAT OF A PORTION OF LOT 1, BLOCK 1  
PART OF THE N.W. 1/4 OF SEC. 21, T. 2 N., R. 38 E.B.M.

First American Title Company  
Idaho Falls, Idaho 83404

This sketch is made solely for the purpose of assisting in locating the premises. The company assumes no liability for alleged loss or damage which may result from reliance on this map.



CURVE TABLE

NAME	DELTA	RADIUS	LENGTH	CHORD
C1	88°33'23"	22.58'	34.90'	31.53'
C2	3°34'05"	330.00'	32.07'	32.06'
C3	9°04'20"	330.00'	52.25'	52.20'

NOTES

- indicates a 1/2" x 24" iron rod found with a yellow plastic cap marked L.S. 760.
- indicates a 1/2" x 24" iron rod placed with a yellow plastic cap marked L.S. 722.
- utility easements are 8' through each lot unless otherwise shown.
- a 10' wide utility easement is reserved along the street side of all lots.