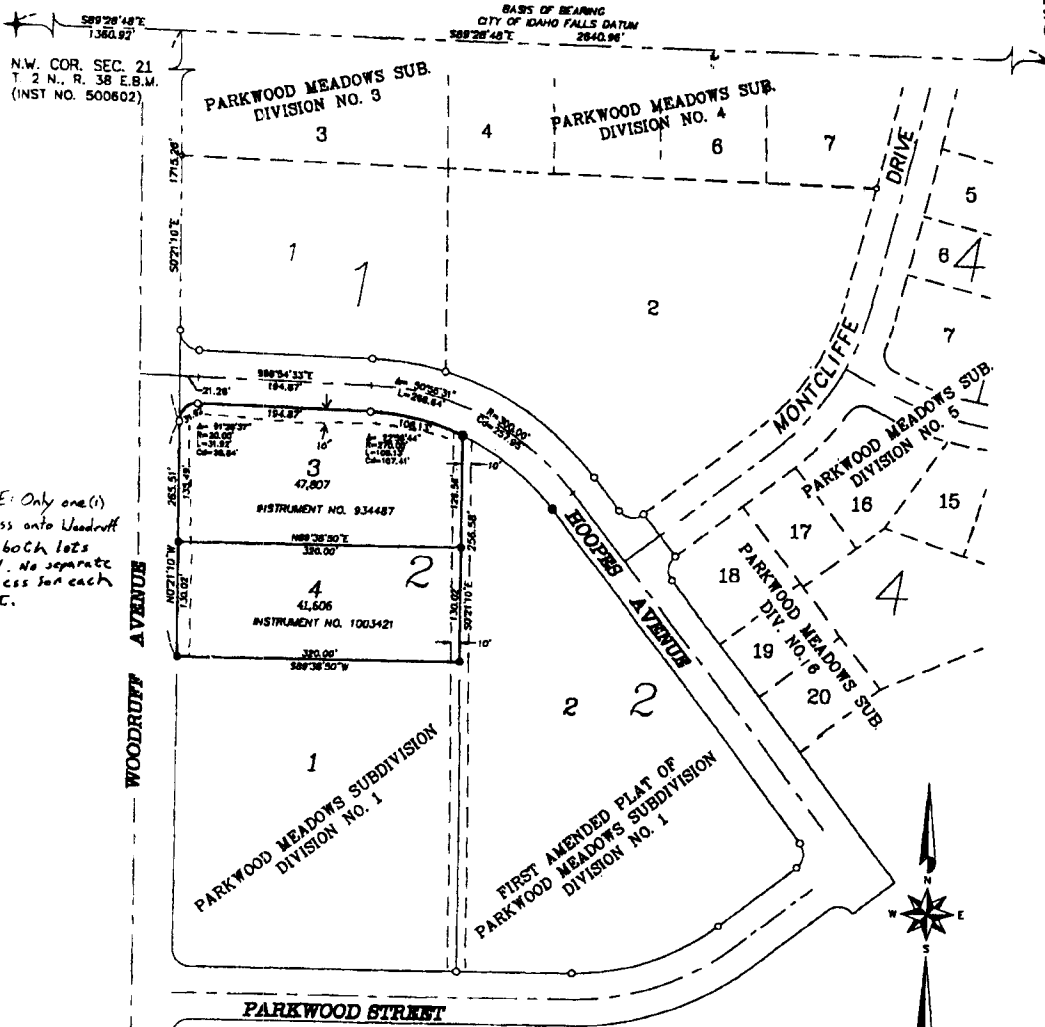


# THE THIRD AMENDED PLAT OF PARKWOOD MEADOWS SUBDIVISION

## DIVISION NO. 1

CITY OF IDAHO FALLS, BONNEVILLE COUNTY, IDAHO  
BEING A REPLAT OF A PORTION OF LOT 1, BLOCK 2  
PART OF THE N.W. 1/4 OF SEC. 21, T. 2 N., R. 38 E.B.M.

NORTH 1/4 CORNER  
SEC. 21 T.2 N., R.38 E.B.M.  
(INST. NO. 500601)



NOTE: Only one (1) access onto Woodruff for both lots 3 & 4. No separate access for each lot.

### NOTES

- Indicates a 1/2" x 24" iron rod placed with a yellow plastic cap marked L.S. 722.
- Indicates a 1/2" x 24" iron rod found with a yellow plastic cap marked L.S. 760.
- Indicates a 5/8" x 30" iron rod found with a yellow plastic cap marked L.S. 827.
- a 10' wide utility and sidewalk easement is reserved along the street side of all lots.
- 41,606 indicates lot area in square feet.

**First American Title Company**  
Idaho Falls, Idaho 83404

This sketch is made solely for the purpose of assisting in locating the premises. The company assumes no liability for alleged loss or damage which may result from reliance on this map

