

PETERSON PARK SUBDIVISION DIVISION NO 2

TO
THE VILLAGE OF AMMON, IDAHO
Part of SW 1/4 of Sec. 26 T2N R38E6M

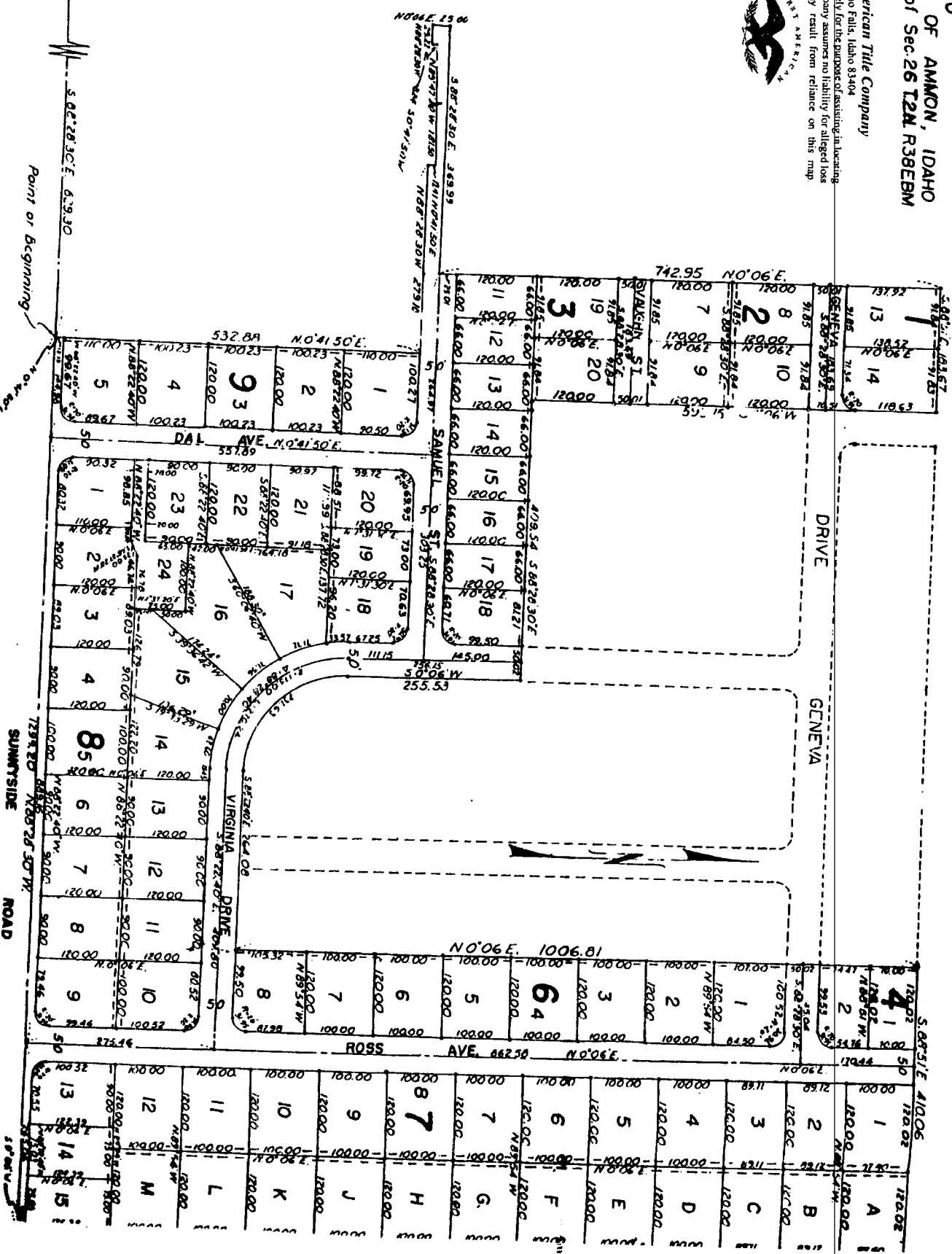
First American Title Company

Idaho Falls, Idaho 83404

This sketch is made solely for the purpose of assisting in locating the premises. The company assumes no liability for alleged loss or damage which may result from reliance on this map.



All easements 8' wide
--- Circles denote iron rods.



S.W. Corner Sec 26
T2N R38E6M

Point of Beginning