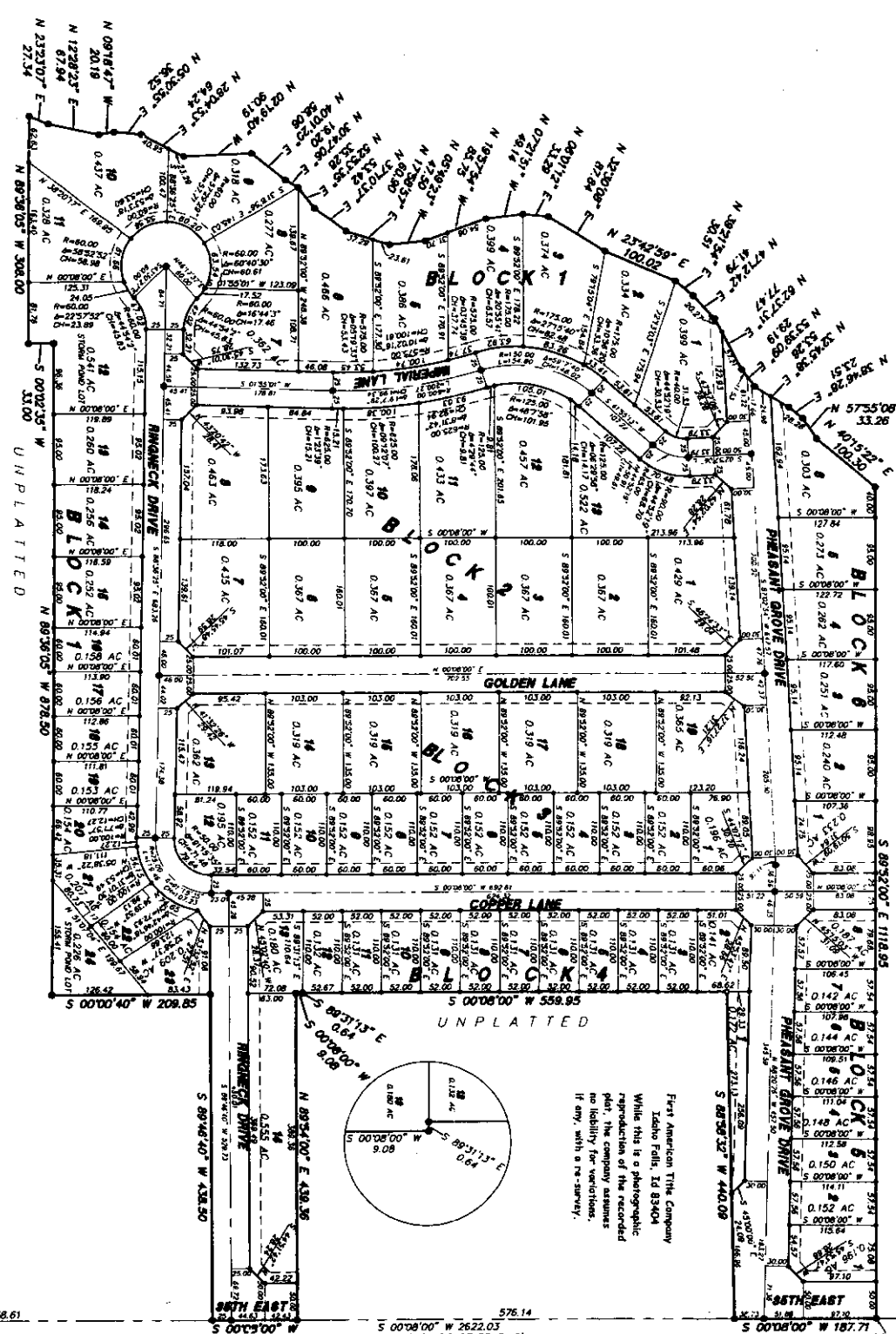


# PHEASANT GROVE

## DIVISION NO. 1

### BONNEVILLE COUNTY, IDAHO

BENJ PART OF THE SE 1/4 OF SECTION 9, T24N, R39E, B1M



BRASS CAP SECTION J  
 T. 24N, R. 39E, B. 1M  
 CORNER BY L.S. 827  
 INSTR. NO. 802075

First American Title Company  
 Idaho Falls, ID 83404

While this is a photographic reproduction of the recorded plat, the company assumes no liability for variations, if any, with a re-survey.

SECTION LINE (BASIS OF BEARING)  
 CITY OF IDAHO FALLS DATUM-2004

BRASS CAP  
 SECTION 9  
 T. 24N, R. 39E, B. 1M  
 CORNER BY L.S. 973  
 INSTR. NO. 500745

