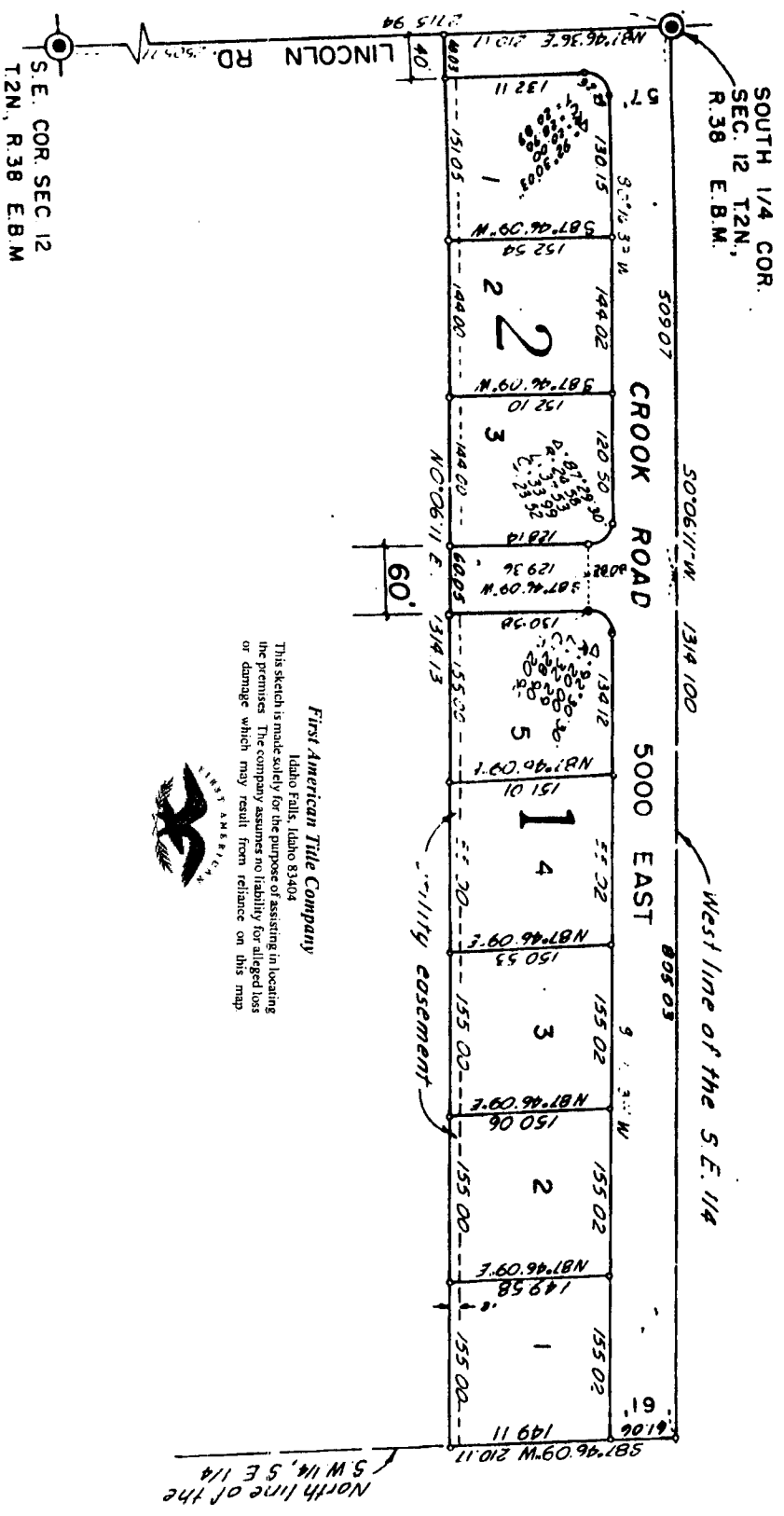




PHIL KNOWLES SUBDIVISION

PART OF W 1/4 OF SE 1/4 SEC. 12
T.2N., R.38 E.B.M.
BONNEVILLE COUNTY, IDAHO



This sketch is made solely for the purpose of assisting in locating the premises. The company assumes no liability for alleged loss or damage which may result from reliance on this map.



First American Title Company
Idaho Falls, Idaho 83404