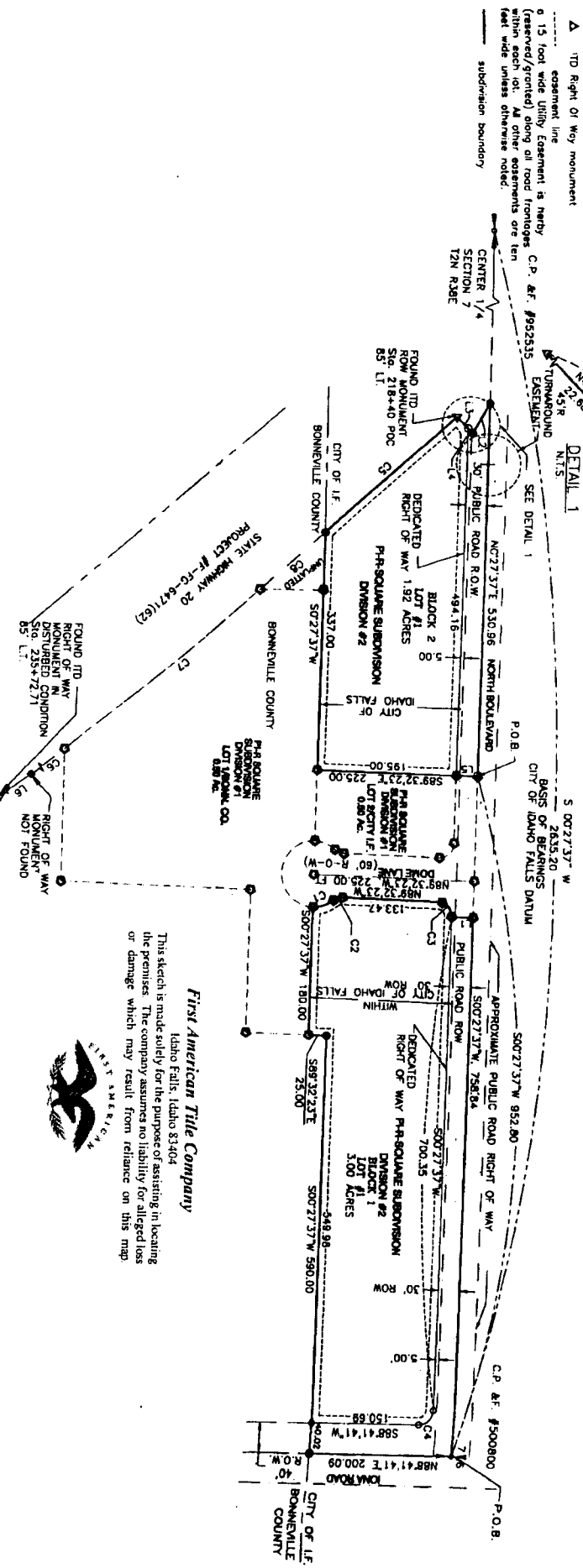


P-I-R SQUARE SUBDIVISION DIVISION #2

AN ADDITION TO THE CITY OF IDAHO FALLS, BONNEVILLE COUNTY, IDAHO
PART OF THE NW 1/4 OF THE NE 1/4 OF SECTION 7
TOWNSHIP 2 NORTH, RANGE 38 EAST B.M.



LINE NO	BEARING	DISTANCE	NUMBER	DELTA	RADIUS	LENGTH	TANGENT	CHORD	CHORD BEG
C1	S89°32'23"E	30.00	1	39°42'54"	45.00	31.19	16.25	30.57	S70°36'10"W
L1	S89°32'23"E	49.46	2	39°42'54"	20.00	13.86	7.22	13.59	S70°36'10"W
L2	S28°34'24"W	82.23	3	90°00'00"	20.00	51.42	20.00	28.28	N44°32'23"W
L3	N44°13'04"W	82.23	4	88°14'04"	20.00	50.80	19.39	27.63	N44°34'38"E
L4	N44°13'04"W	30.00	5	01°14'12"	11544.16	249.19	327.92	654.15	S40°23'47"W
L5	S89°12'23"E	30.00	6	03°14'51"	11544.16	654.30	327.92	654.15	S40°23'47"W
L6	S52°36'38"W	359.07	7	01°46'44"	11544.16	358.46	179.24	358.44	S40°30'23"W
C8	00°36'10"	11544.16	8	00°36'10"	11544.16	121.45	60.73	121.45	S47°18'56"W



First American Title Company
 Idaho Falls, Idaho 83404
 This sketch is made solely for the purpose of assisting in locating the premises. The company assumes no liability for alleged loss or damage which may result from reliance on this map.