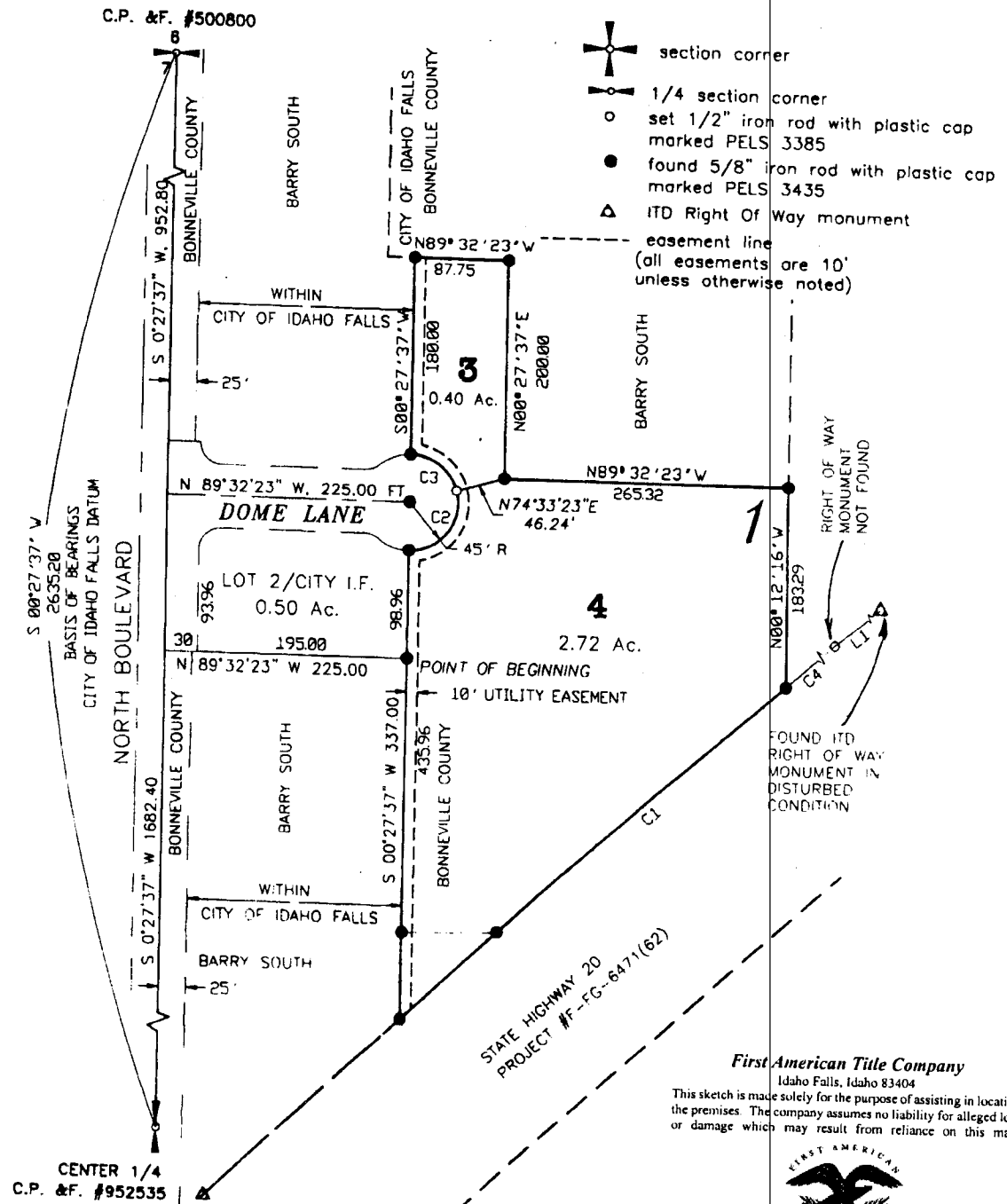


# Pi-R SQUARE SUBDIVISION DIVISION NO. 3

IN BONNEVILLE COUNTY, IDAHO, INCLUDING AN  
AMENDMENT OF LOT #1, BLOCK 1, Pi-R SQUARE SUBD.  
PART OF THE NW 1/4 OF THE NE 1/4 OF SECTION 7  
TOWNSHIP 2 NORTH, RANGE 38 EAST B.M.



- section corner
- 1/4 section corner
- set 1/2" iron rod with plastic cap marked PELS 3385
- found 5/8" iron rod with plastic cap marked PELS 3435
- ITD Right Of Way monument
- easement line (all easements are 10' unless otherwise noted)



LINE TABLE			CURVE TABLE						
NUMBER	BEARING	DISTANCE	NUMBER	DELTA	RADIUS	LENGTH	TANGENT	CHORD	CHORD BRG
L1	S52°38'38"W	359.02	C1	02°22'55"	11544.16	479.91	239.99	479.87	N48°12'20"E
			C2	105°54'14"	45.00	83.18	59.61	71.83	S37°30'30"W
			C3	74°05'46"	45.00	58.19	33.97	54.22	S52°29'30"W
			C4	03°14'51"	11544.16	654.30	327.24	654.21	S51°01'13"W

**First American Title Company**  
Idaho Falls, Idaho 83404  
This sketch is made solely for the purpose of assisting in locating the premises. The company assumes no liability for alleged loss or damage which may result from reliance on this map.

