

Pi-R SQUARE SUBDIVISION

LOT #1, IN BONNEVILLE COUNTY, IDAHO
 PART OF THE NW 1/4 OF THE NE 1/4 OF SECTION 7
 TOWNSHIP 2 NORTH, RANGE 38 EAST B.M.

- ✚ section corner
- 1/4 section corner
- set 1/2" iron rod with plastic cap
- marked PELS 3435
- set 5/8" iron rod with plastic cap
- marked PELS 3435
- ▲ 10' Right Of Way monument
- easement line
- (all easements are 10' unless otherwise noted)
- subdivision boundary



FITZ American Tile Company
 Idaho Falls, Idaho 83404

This sketch is made solely for the purpose of assisting in locating the premises. The company assumes no liability for alleged loss or damage which may result from reliance on this map

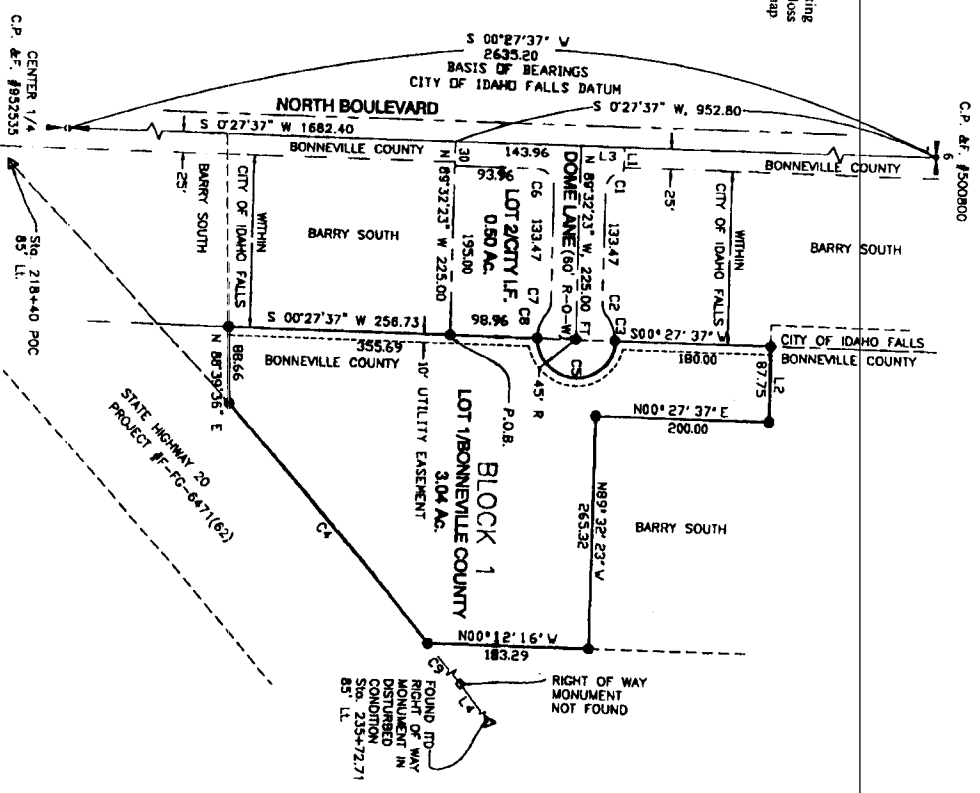


LINE TABLE

NUMBER	BEARING	DISTANCE
L1	S89°32'22"E	30.00
L2	N89°32'23"W	87.75
L3	N00°27'37"E	50.00
L4	S58°58'38"W	359.02

CURVE TABLE

NUMBER	DELTA	RADIUS	LENGTH	TANGENT	CHORD	CHORD BRG.
C1	90°00'00"	20.00	31.42	20.00	28.28	S44°32'23"E
C2	39°42'54"	20.00	13.86	7.22	13.59	N70°36'10"E
C3	39°42'54"	45.00	31.19	16.25	30.57	N70°36'10"E
C4	01°46'44"	11544.16	358.46	179.24	358.44	N89°30'25"E
C5	180°00'00"	45.00	141.37	-----	90.00	S00°27'37"E
C6	90°00'00"	20.00	31.42	20.00	28.28	N45°27'37"E
C7	39°42'54"	20.00	13.86	7.22	13.59	S69°40'56"E
C8	39°42'54"	45.00	31.19	16.25	30.57	S69°40'56"E
C9	09°14'51"	11544.16	654.30	327.24	654.21	S91°01'13"W



C.P. & F. #500800

C.P. & F. #852535

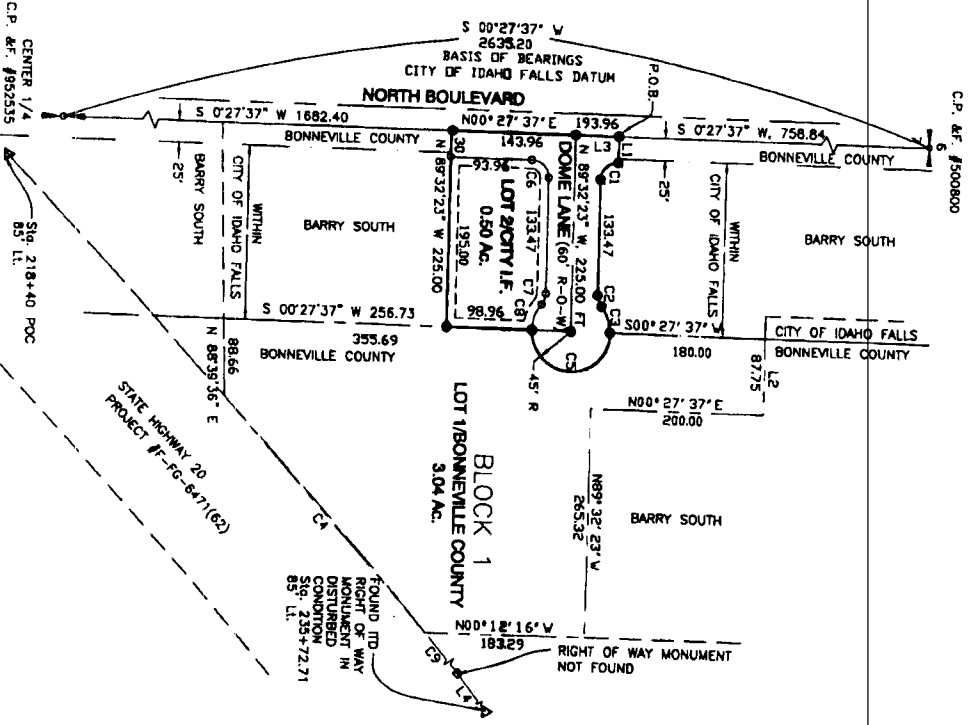
Pi-R SQUARE SUBDIVISION

LOT #2, AN ADDITION TO THE CITY OF IDAHO FALLS, IDAHO PART OF THE NW 1/4 OF THE NE 1/4 OF SECTION 7 TOWNSHIP 2 NORTH, RANGE 38 EAST B.M.

- ⊕ section corner
- 1/4 section corner
- set 1/2" iron rod with plastic cap marked PEIS 3435
- set 5/8" iron rod with plastic cap marked PEIS 3435
- △ ITD Right Of Way monument
- - - - - easement line (all easements are 10' unless otherwise noted)
- subdivision boundary



First American Title Company
 Idaho Falls, Idaho 83404
 This sketch is made solely for the purpose of assisting in locating the premises. The company assumes no liability for alleged loss or damage which may result from reliance on this map.



NUMBER	BEARING	DISTANCE	DELTA	RADIUS	CHORD LENGTH	TANGENT	CHORD BRG.
L1	S89°32'23"E	30.00	90°00'00"	20.00	31.42	20.00	S44°32'23"E
L2	N89°32'23"W	87.73	39°42'54"	20.00	13.86	7.22	N70°36'10"E
L3	N00°27'37"E	52.00	39°42'54"	45.00	31.19	30.57	N70°36'10"E
L4	S52°38'38"W	35.00	02°45'44"	11544.16	358.46	179.24	N48°30'25"E
C1	90°00'00"	20.00	180°00'00"	45.00	141.37	90.00	S00°27'37"W
C2	39°42'54"	20.00	90°00'00"	20.00	31.42	28.28	N43°27'37"E
C3	39°42'54"	20.00	39°42'54"	20.00	13.86	13.59	S69°40'56"E
C4	02°45'44"	45.00	03°14'51"	11544.16	654.50	327.24	S51°01'13"W