

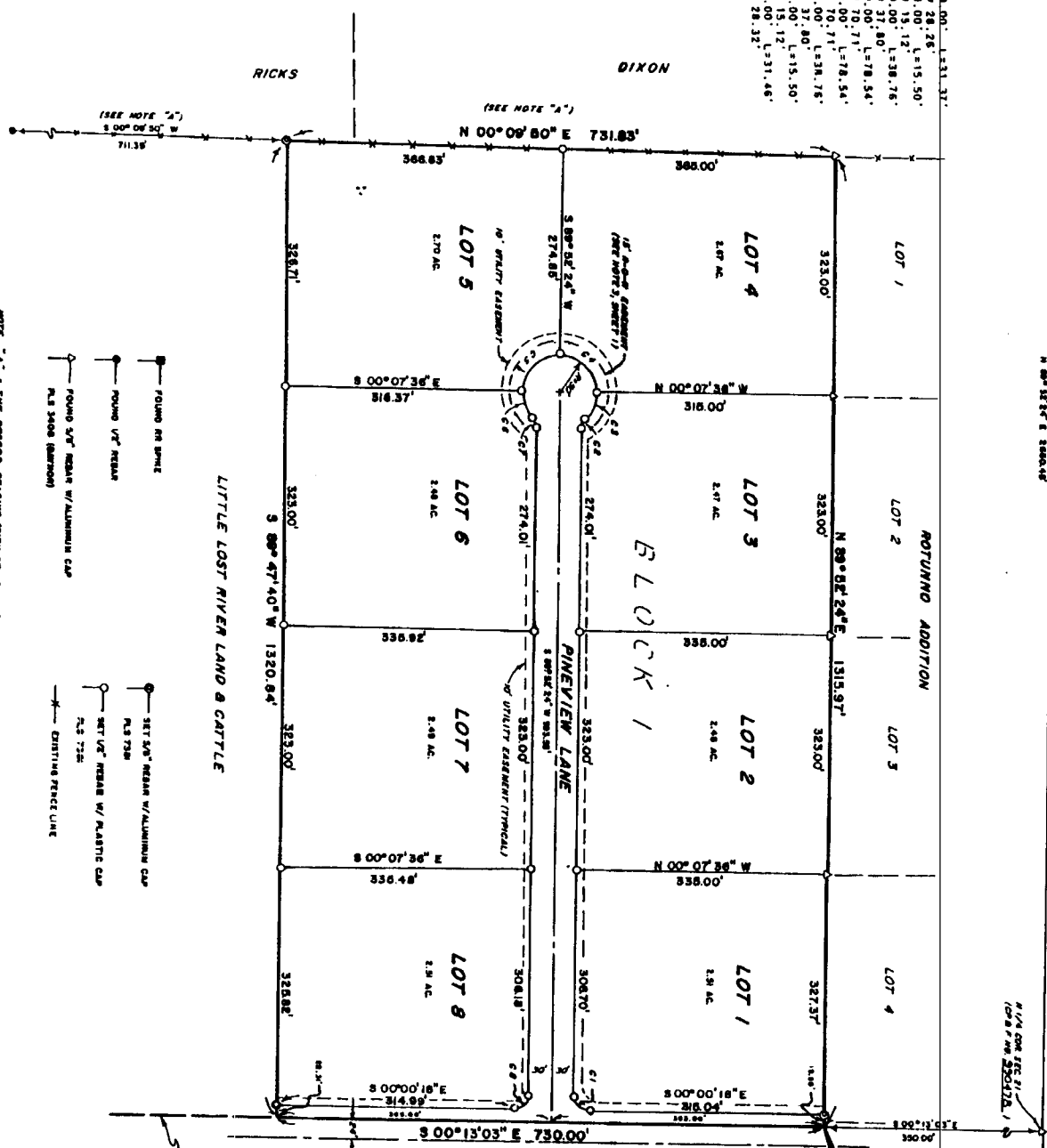
# PINEVIEW ACRES SUBDIVISION

FROM PLAT OF NOTUNNO ADDITION - CITY OF IRRWIN  
*Scale of Showing*  
 N 89° 47' 40" E 1320.84'



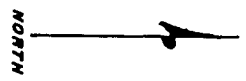
CURVE TABLE

C1	CA=44824.53'	CH=5449.58'	CL=8320.00'	L=131.37'
C2	CA=44824.53'	CH=5449.58'	CL=8320.00'	L=131.37'
C3	CA=44824.53'	CH=5449.58'	CL=8320.00'	L=131.37'
C4	CA=44824.53'	CH=5449.58'	CL=8320.00'	L=131.37'
C5	CA=44824.53'	CH=5449.58'	CL=8320.00'	L=131.37'
C6	CA=44824.53'	CH=5449.58'	CL=8320.00'	L=131.37'
C7	CA=44824.53'	CH=5449.58'	CL=8320.00'	L=131.37'
C8	CA=44824.53'	CH=5449.58'	CL=8320.00'	L=131.37'



- FOUND IR SPIKE
- FOUND IR NAIL
- FOUND SP" NAIL W/ ALUMINUM CAP
- FOUND SP" NAIL W/ ALUMINUM CAP
- FOUND IR NAIL
- FOUND SP" NAIL W/ PLASTIC CAP
- EXISTING FENCE LINE

NOTE "A" - THE CORNER BEARING SET BY ANTHONY AND NO. 873 FROM THIS LINE IS N 89° 47' 40" E.



**First American Title Company**  
 Idaho Falls, Idaho 83404  
 This sketch is made solely for the purpose of assisting in locating the premises. The company assumes no liability for alleged loss or damage which may result from reliance on this map.

N 89° 15' 49" E 2848.39' (SEE NOTE "A")  
 FILED AT INSTRUMENT NO. 281183 IN BOWNEVILLE COUNTY RECORDS