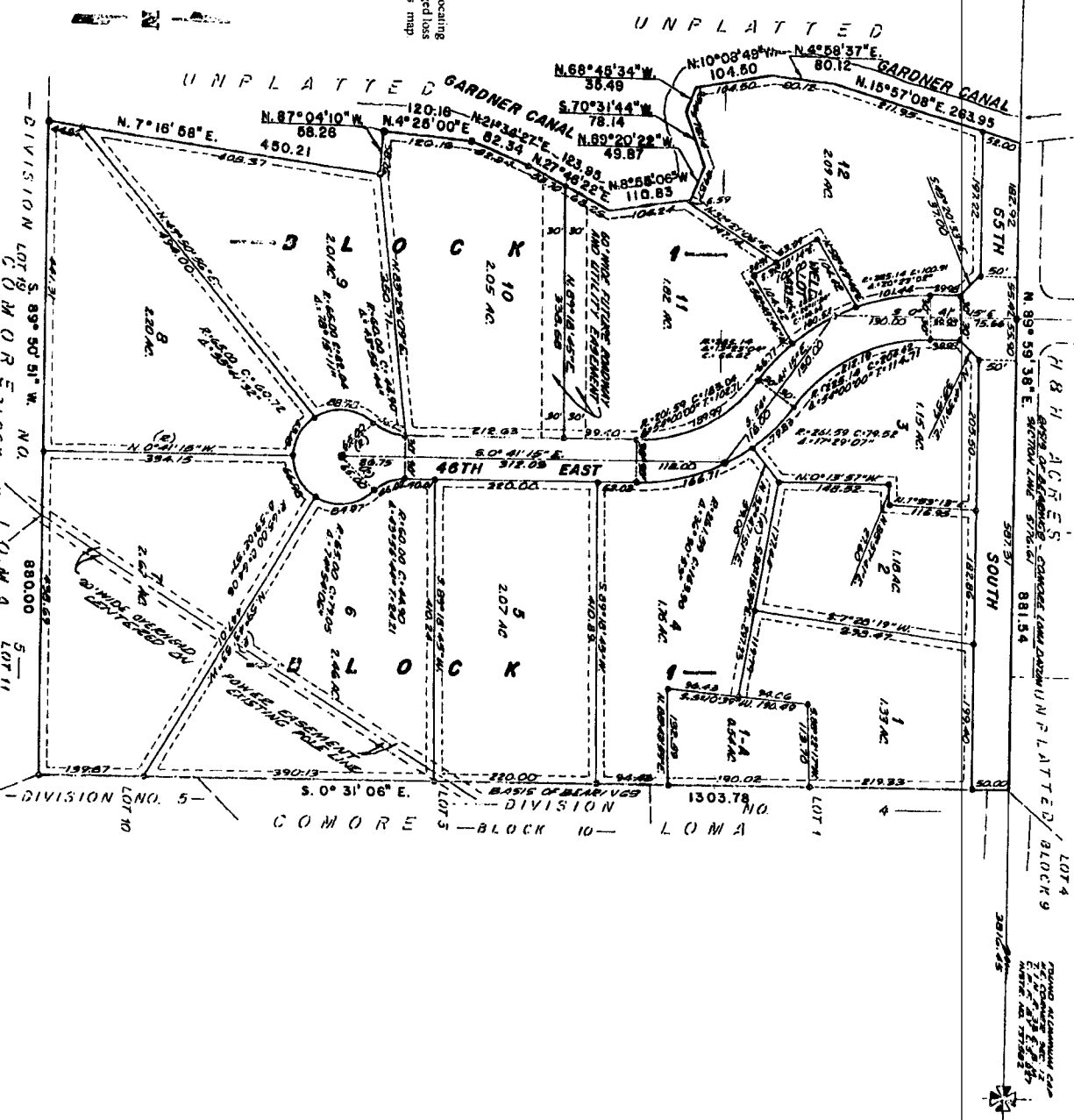


POLO CLUB ESTATES
DIVISION NO. 1
BONNEVILLE COUNTY, IDAHO
PART OF THE NE 1/4 OF SECTION 12, T. 1 N. R. 38 E. B.M.



First American Title Company
 Idaho Falls, Idaho 83404

This sketch is made solely for the purpose of assisting in locating the premises. The company assumes no liability for alleged loss or damage which may result from reliance on this map.



LEGEND & NOTES

- 1/4" = 100' Scale for lot and block boundaries (S. 27/75)
 - 1/2" = 200' Scale for street and canal boundaries (S. 27/75)
 - 1/8" = 100' Scale for canal and street boundaries (S. 27/75)
 - 1/16" = 50' Scale for canal and street boundaries (S. 27/75)
- A 1/4" line scale is shown at the bottom of the legend.

The County and the subdivision were approved by County, State and Federal authorities. The subdivision was recorded on 12/27/75.

Private surveying operations and the construction of streets in the proposed subdivision are to be in the office of the County Engineer and subject to his approval.