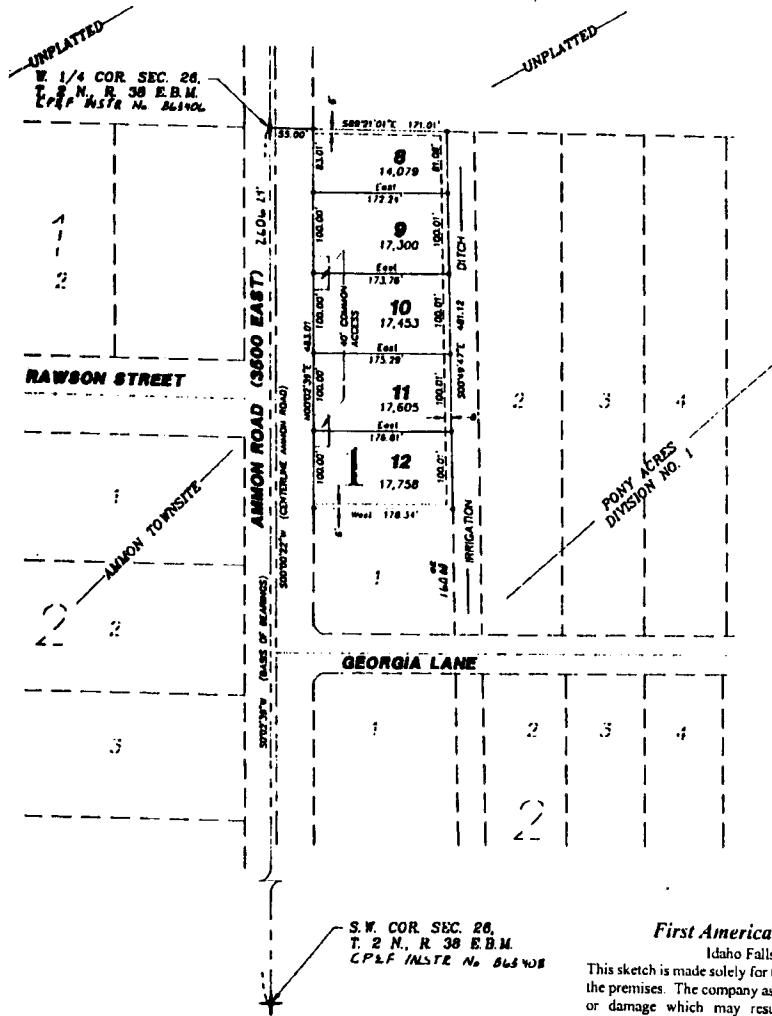


# FIRST AMENDED PLAT OF PONY ACRES ADDITION

## DIVISION NO. 1

CITY OF AMMON, BONNEVILLE COUNTY, IDAHO  
BEING A REPLAT OF LOT 1, BLOCK 1 LESS THE SOUTH 100 FEET  
PART OF THE SOUTHWEST 1/4 OF SEC. 26, T. 2 N., R. 38 E.B.M.



**First American Title Company**  
Idaho Falls, Idaho 83404

This sketch is made solely for the purpose of assisting in locating the premises. The company assumes no liability for alleged loss or damage which may result from reliance on this map.



### NOTES

- indicates a 1/2" x 24" iron rod placed with a yellow plastic cap marked L.S. 7380.
- utility easements are 8' thru each lot unless otherwise shown.
- - - a 10' wide utility easement is reserved along the street side of all lots.
- 14,007 indicates lot area in square feet.
- A 40' Common Access will be provided between Lots 9 and 10, and between Lots 11 and 12.