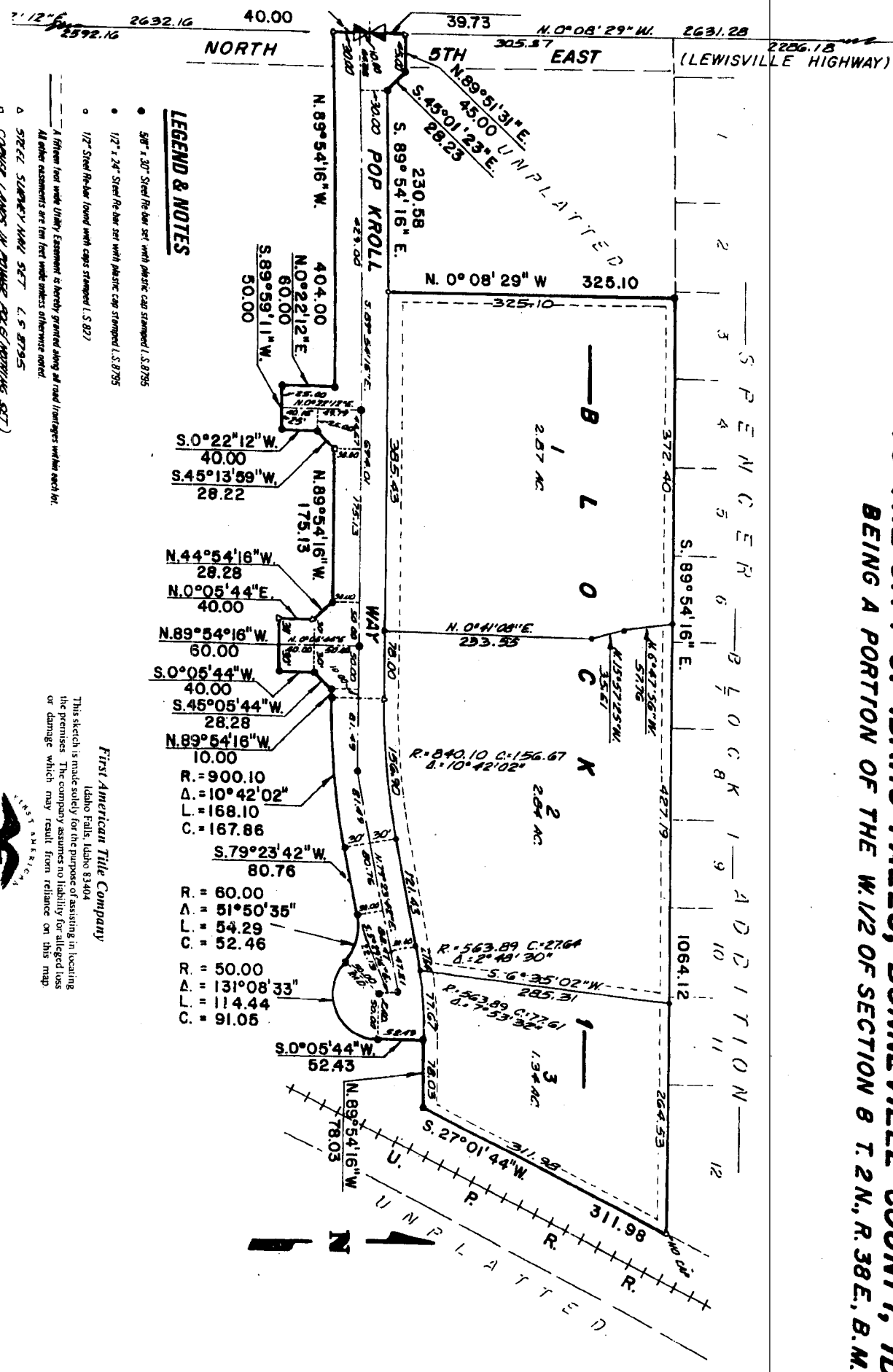


END ALUMINUM CAP  
 NEW COPIES SEC. 8  
 T. 2 N., R. 38 E., B. 11  
 C. 18, L. 27, 28, 29, 30  
 INSTR. NO. 744883

# POP KROLL ADDITION

## DIVISION NO. 1

TO THE CITY OF IDAHO FALLS, BONNEVILLE COUNTY, IDAHO  
 BEING A PORTION OF THE W. 1/2 OF SECTION 8 T. 2 N., R. 38 E., B. 11.



### LEGEND & NOTES

- 5/8" x 3/4" Steel Rebar set with plastic cap stamped I.S. 8795
- 1/2" x 24" Steel Rebar set with plastic cap stamped I.S. 8795
- 1/2" Steel Rebar found with caps stamped I.S. 827
- A fifteen foot wide Utility Easement is hereby granted along all road frontages within each lot.
- All other easements are ten feet wide unless otherwise noted.
- ◊ 37262 SURVEY MAP SET L.S. 8795
- ◊ CORNER LAMBS IN PLACE ARE (NOTHING SET)

First American Title Company  
 Idaho Falls, Idaho 83404

This sketch is made solely for the purpose of assisting in locating the premises. The company assumes no liability for alleged loss or damage which may result from reliance on this map.

