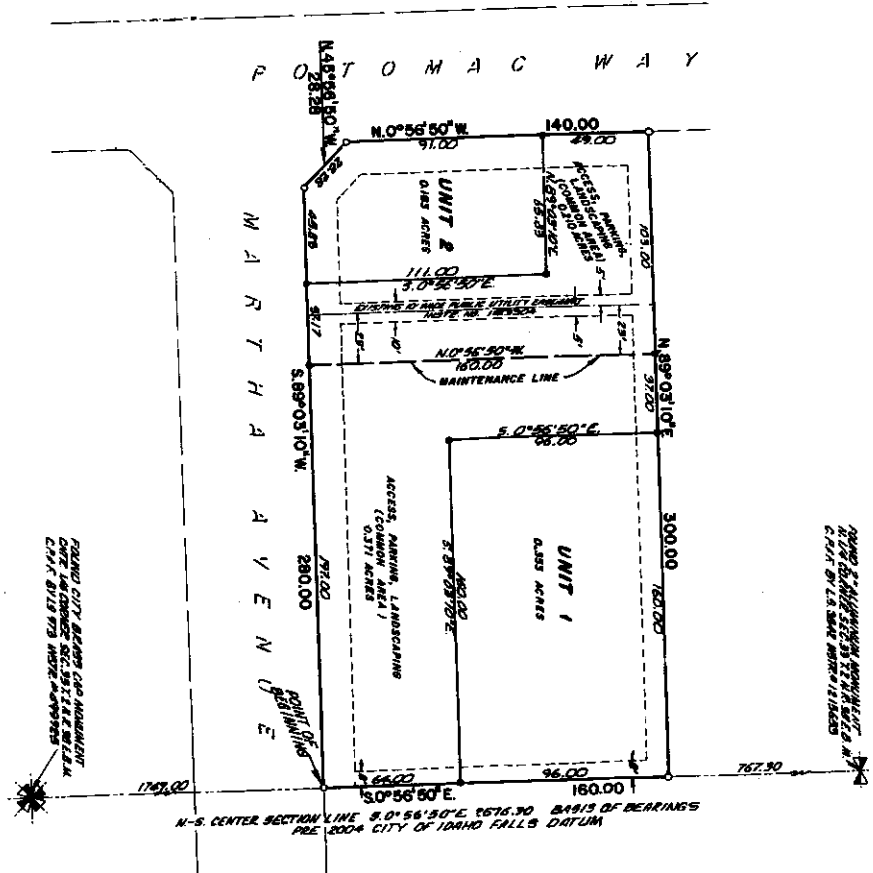


POTOMAC BUSINESS PARK PHASE 1

PURSUANT TO IDAHO CODE, TITLE 85, CHAPTER 16
CITY OF IDAHO FALLS, BONNEVILLE COUNTY, IDAHO
 BEING A PART OF LOT 5, BLOCK 13, ST. CLAIR ESTATES, DIVISION NO. 13
 IN THE NE 1/4 OF THE NW 1/4 OF SECTION 33, T. 2 N., R. 39 E., B.M.

TRIMMED TO SHOW THE
 CITY OF IDAHO FALLS, IDAHO
 CITY OF U.S. STATE MAP # 1216453

First American Title Company
 Idaho Falls, Id 83404
 While this is a photographic
 reproduction of the recorded
 plat, the company assumes
 no liability for variations,
 if any, with a re-survey.



LEGEND & NOTES

- 1/2" Round hole found with cap removed (S. 8705) under water table
 - 5/8" Round hole found with cap removed (S. 8705) under water table
 - 1/2" x 24" Round hole set with plastic cap removed (S. 8705)
- A filling hole with Public Utility Equipment is shown ground along at road frontage with each unit. All other public utility easements are for fire water under water table.

Find and contents of the water property acquired by the Unit Boundary lines including the land and all improvements thereon, but are subject to the covenants, conditions, and restrictions, and easements set forth in the Declaration of Covenants, Conditions and Restrictions of Potomac Business Park, Phase 1.

For District 7 Needs Department approval and registration with right statement, see the Plat of St. Clair Estates, Division No. 13, recorded under Instrument No. _____

NOTE

Each party is responsible for the maintenance of all land with an area of 0.724 acres
 and 0.371 acres
 and 1 - 0.073 acres