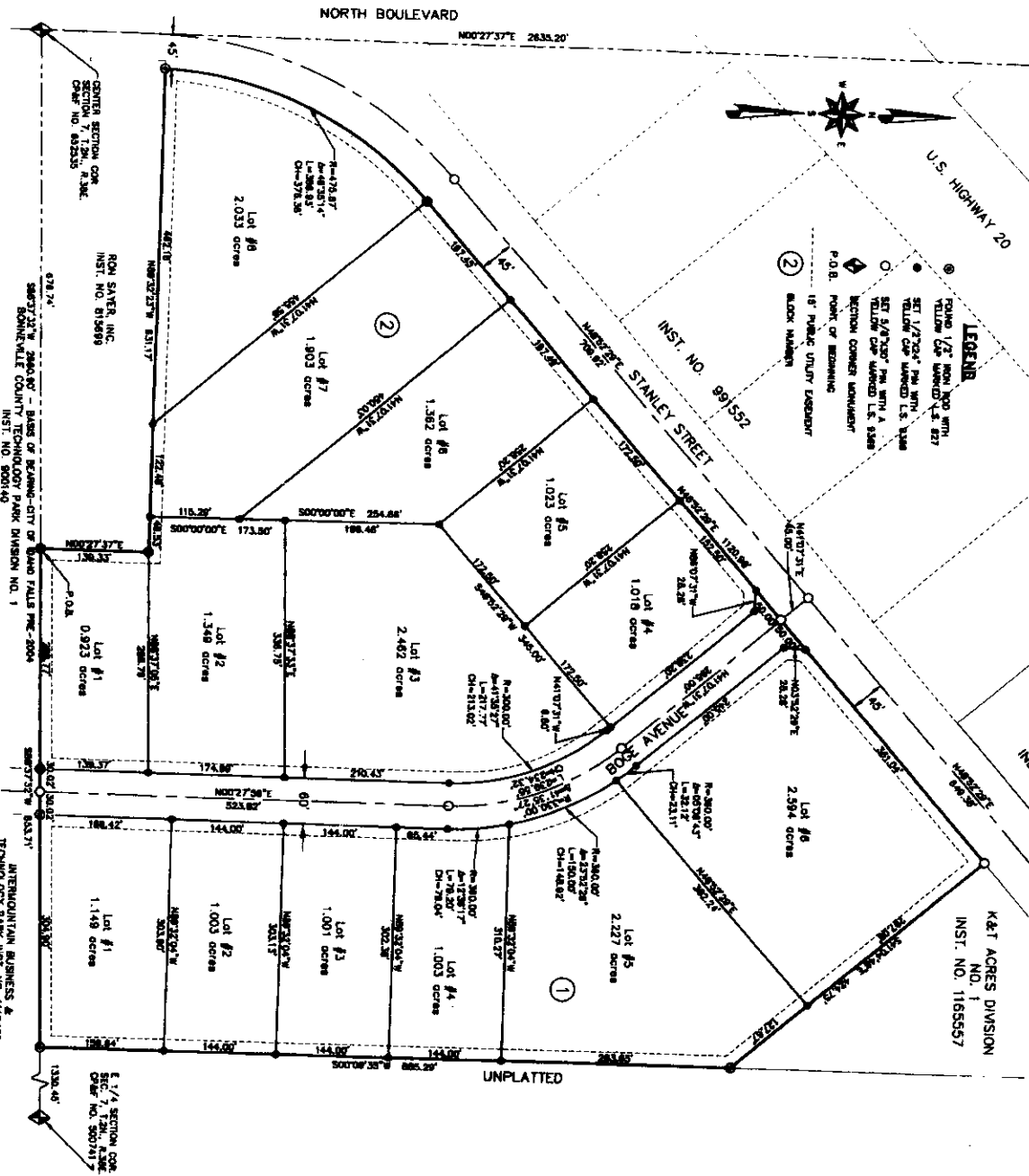


PREMIER BUSINESS PARK-DIVISION NO. 1

AN ADDITION TO THE CITY OF IDAHO FALLS, BONNEVILLE COUNTY, IDAHO, PART OF NE 1/4 OF SECTION 7, TOWNSHIP 2 NORTH, RANGE 38 EAST, B.M.



First American Title Company
 Idaho Falls, ID 83404
 While this is a photographic reproduction of the recorded plat, the company assumes no liability for variations, if any, with a re-survey.

INTERMOUNTAIN BUSINESS & TECHNOLOGY PARK INST. NO. 115453

RON SAVER, INC. INST. NO. 815689

U.S. HIGHWAY 20

NORTH BOULEVARD

UNPLATTED

K&T ACRES DIVISION INST. NO. 1165557