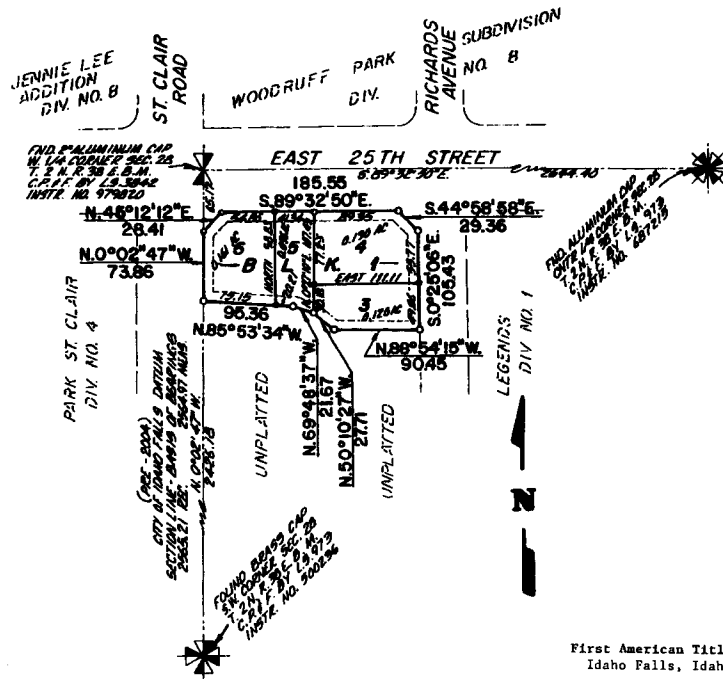


FIRST AMENDED PLAT OF PRESTWICH COUNTRY ESTATES DIVISION NO. 2

**AN ADDITION TO THE CITY OF IDAHO FALLS, BONNEVILLE COUNTY, IDAHO
IN THE N.W. 1/4 OF THE S.W. 1/4 OF SECTION 28 T. 2 N. R. 38 E., B.M.
BEING A REPLAT OF LOTS 1 AND 2 BLOCK 1**



First American Title Company
Idaho Falls, Idaho 83404
While this is a photographic reproduction of the recorded plat, the Company assumes no liability for variations, if any, with a re-survey.

LEGEND & NOTES

- 5/8" x 3/8" Steel rebar set with plastic cap stamped L.S.8795
- 1/2" x 24" Steel rebar set with plastic cap stamped L.S.8795
- 5/8" Steel rebar found with caps stamped L.S.8795
- 1/2" Steel rebar found with caps stamped L.S.8795

A twelve foot wide Public Utility Easement is hereby granted along all road frontages within each lot. All other public utility easements are eight feet wide unless otherwise noted.