

# QUAIL HOLLOW

## BEING THE FIRST AMENDED PLAT OF LOTS 1, 2, 3, 4 AND 5, BLOCK 3 KINSMEN COUNTRY ESTATES DIVISION NO. 2

BONNEVILLE COUNTY, IDAHO  
PART OF THE N.W. 1/4, SEC. 32, T. 2N., R. 38 E.B.M.

First American Title Company

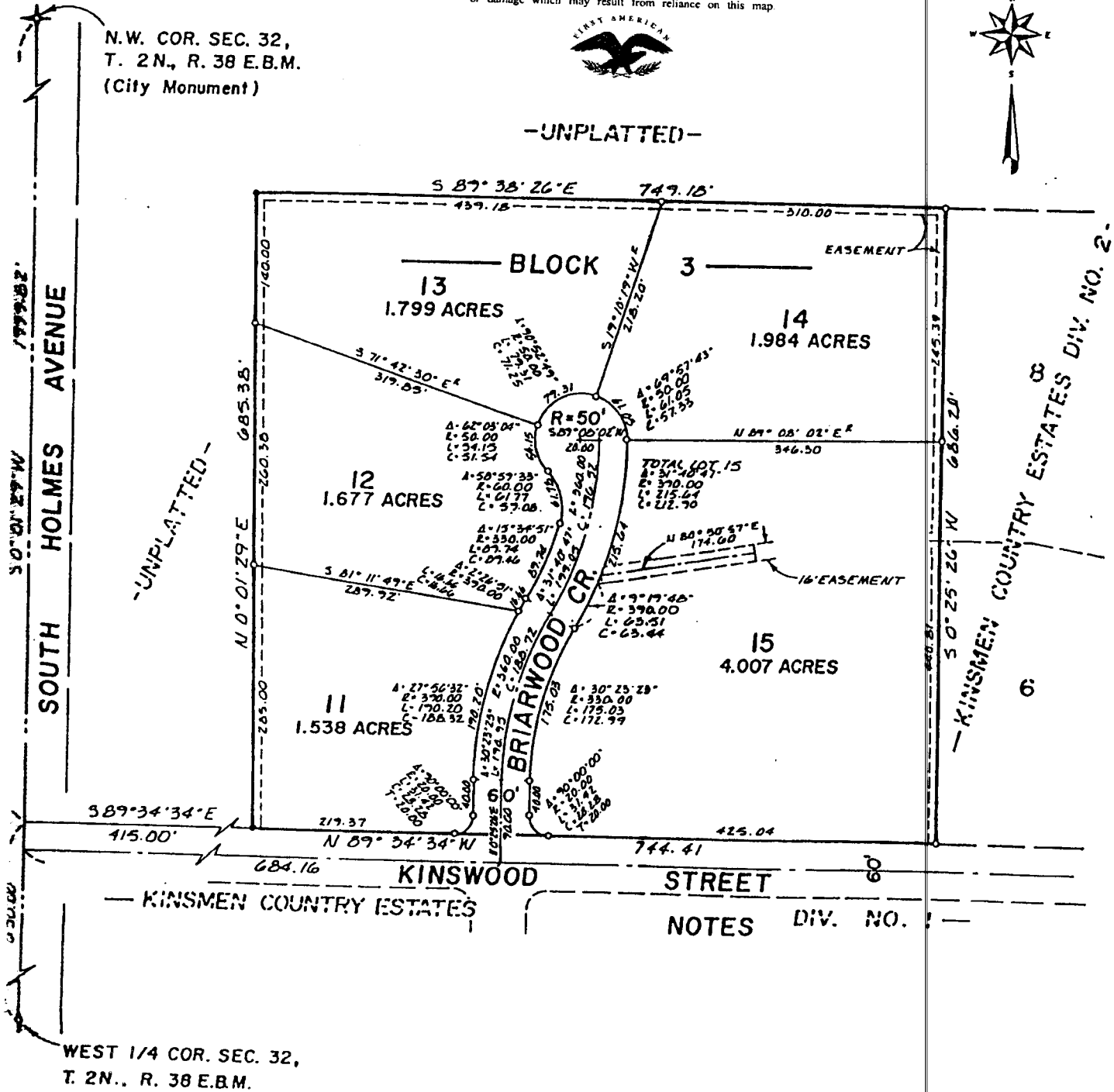
Idaho Falls, Idaho 83404

This sketch is made solely for the purpose of assisting in locating the premises. The company assumes no liability for alleged loss or damage which may result from reliance on this map.



-UNPLATTED-

N.W. COR. SEC. 32,  
T. 2N., R. 38 E.B.M.  
(City Monument)



WEST 1/4 COR. SEC. 32,  
T. 2N., R. 38 E.B.M.