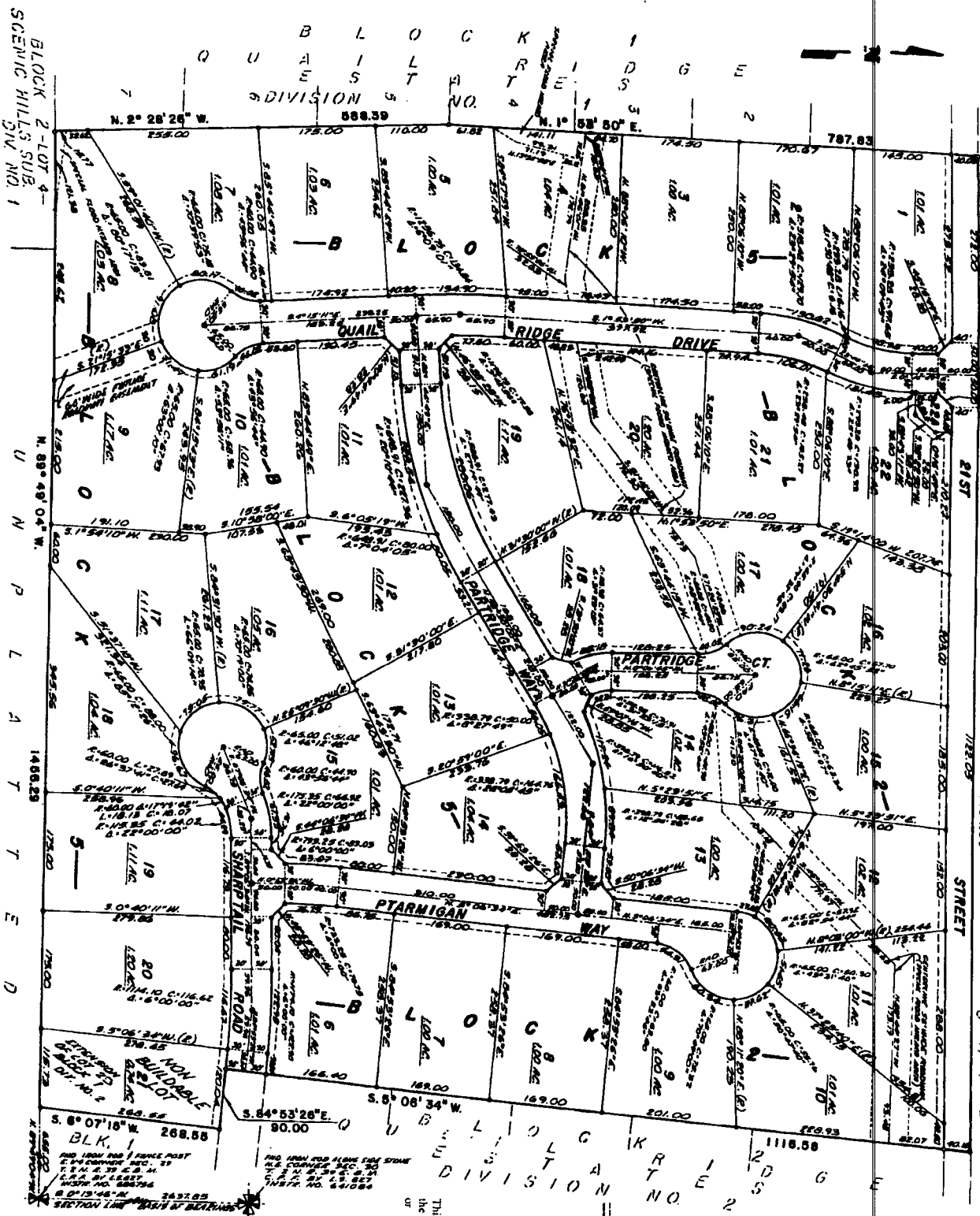


QUAIL RIDGE ESTATES

DIVISION NO. 4

BONNEVILLE COUNTY, IDAHO

U N P L A T T E D BEING PART OF THE NE 1/4 OF SECTION 34, T 2 N., R. 39 E., B. M. U N P L A T T E D



LEGEND & NOTES

- 1/4" = 100' (Scale of this map)
- 1/8" = 200' (Scale of this map)
- 1/16" = 400' (Scale of this map)
- 1/32" = 800' (Scale of this map)
- 1/64" = 1600' (Scale of this map)

This map was prepared by the Surveyor General of Idaho, under the authority of the Board of Surveyors, and is subject to the provisions of the laws of Idaho relating to the Surveyors General and the Board of Surveyors.

First American Title Company

Idaho Falls, Idaho 83404
 This sketch is made solely for the purpose of assisting in locating the premises. The company assumes no liability for alleged loss or damage which may result from reliance on this map.



BLOCK 2-LOT 4- SCENIC HILLS SUB. DIV. NO. 1

B L O C K I D G U N P L A T T E D

D I V I S I O N N O . 4