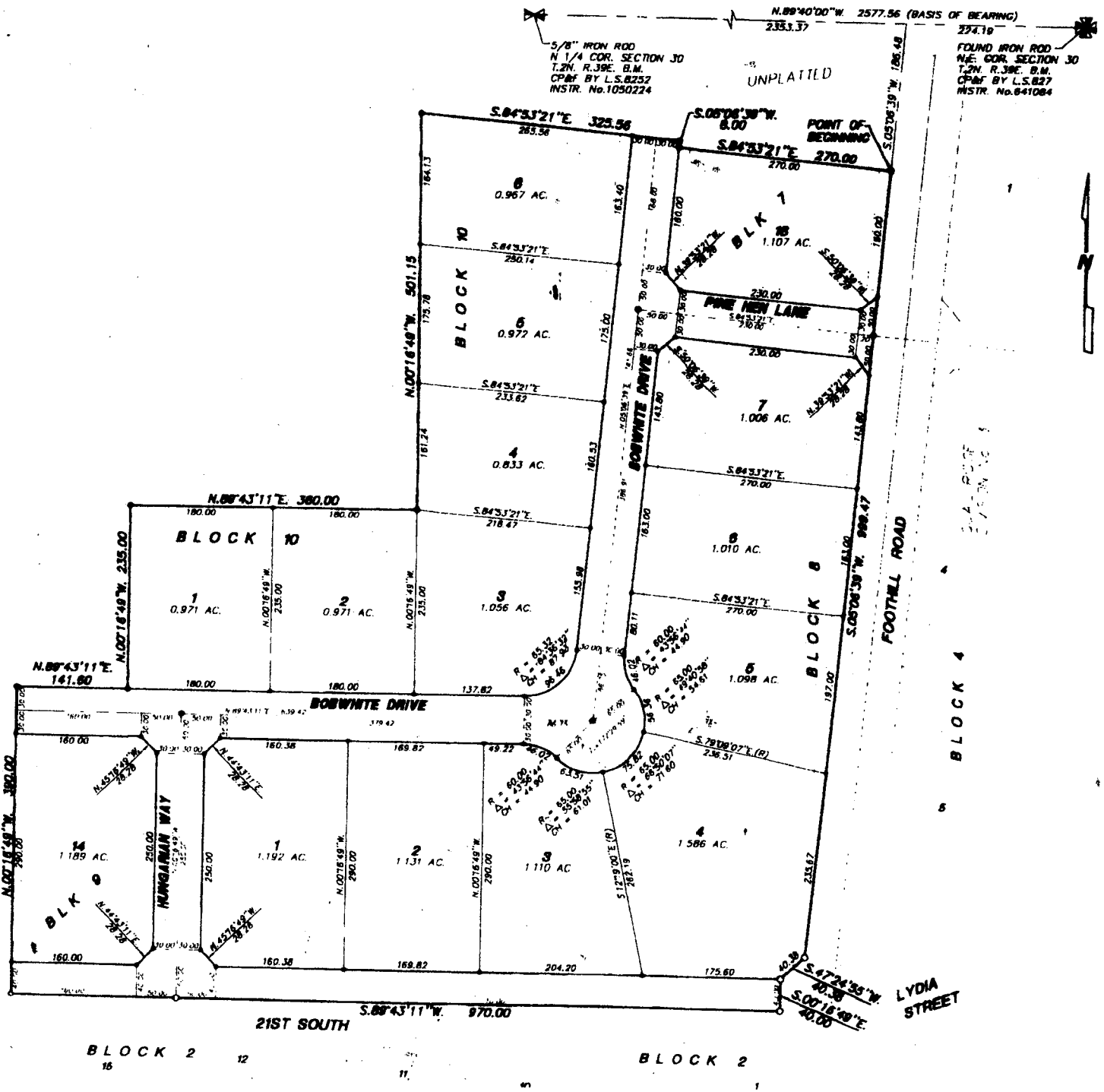


QUAIL RIDGE ESTATES DIVISION NO. 5

AN ADDITION TO THE CITY OF AMMON
BONNEVILLE COUNTY, IDAHO
BEING PART OF THE N.E. 1/4 SECTION 30 T.2N. R.39E. B.M.



LEGEND & NOTES

- 5/8" x 30" Steel Re-bar set with plastic cap stamped I. S. 8796
- 1/2" x 24" Steel Re-bar set with plastic cap stamped I. S. 8796
- 5/8" Steel Re-bar found with plastic cap stamped I. S. 8796
- 1/2" Steel Re-bar found with caps stamped I. S. 827 unless otherwise noted NC = No Cap

A Easement is hereby reserved along all road frontages. All other easement widths are ten feet wide unless otherwise noted.

Direct access from lots onto 21st South and Foothill Road **IS NOT ALLOWED**

According to FEMA Flood Plain Map of Bonneville County, Idaho Community Panel No. 16027-0235 C effective November 4, 1981 this subdivision lies in Zone C, areas of minimal flooding.

While this is a photographic reproduction of the recorded plat, the Company assumes no liability for variations, if any, with a re-survey.

First American Title Company
Idaho Falls, Idaho 83401