

QUAIL RIDGE ESTATES DIVISION NO. 6 AN ADDITION TO THE CITY OF AMMON BONNEVILLE COUNTY, IDAHO BEING PART OF THE N.E. 1/4 SECTION 30 T.2N. R.39E. B.M.

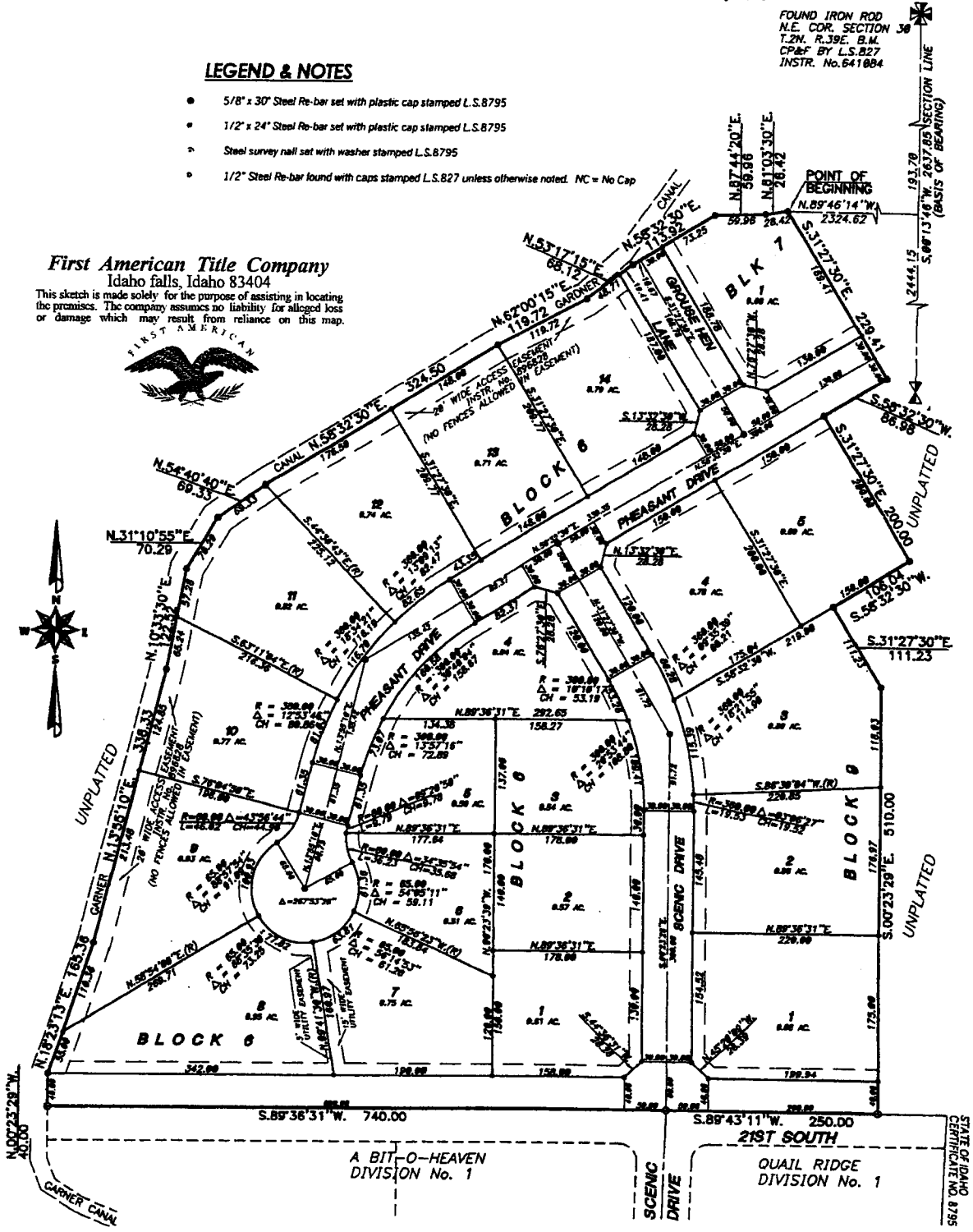
FOUND IRON ROD
N.E. COR. SECTION 30
T.2N. R.39E. B.M.
C&P BY L.S.827
INSTR. No. 641884

LEGEND & NOTES

- 5/8" x 30" Steel Re-bar set with plastic cap stamped L.S.8795
- 1/2" x 24" Steel Re-bar set with plastic cap stamped L.S.8795
- Steel survey nail set with washer stamped L.S.8795
- 1/2" Steel Re-bar found with caps stamped L.S.827 unless otherwise noted. NC = No Cap

First American Title Company
Idaho falls, Idaho 83404

This sketch is made solely for the purpose of assisting in locating the premises. The company assumes no liability for alleged loss or damage which may result from reliance on this map.



STATE OF IDAHO
CERTIFICATE NO. 8795