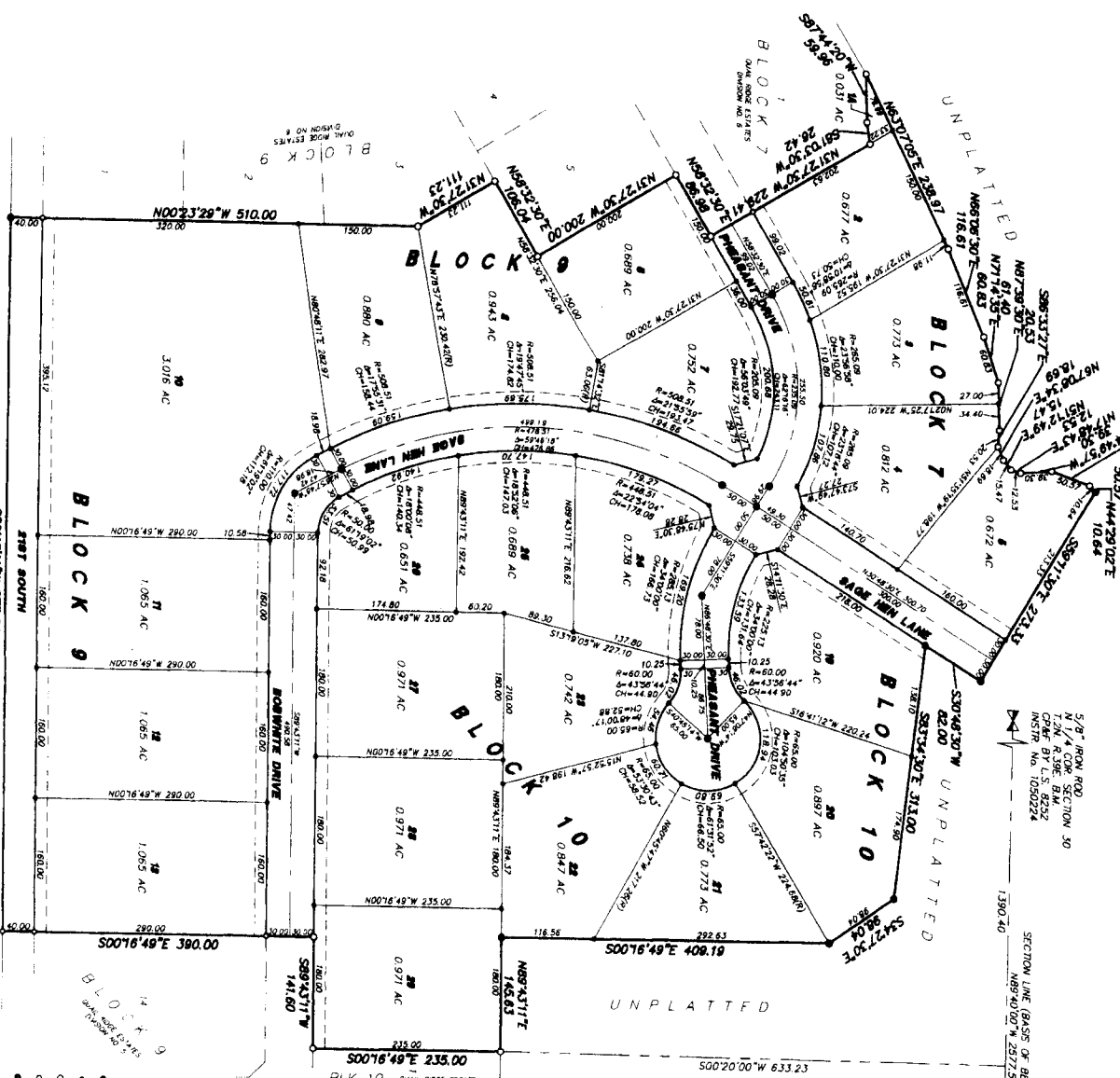


# QUAIL RIDGE ESTATES

## DIVISION NO. 7

### AN ADDITION TO THE CITY OF AMMON, BONNEVILLE COUNTY, IDAHO

BEING PART OF THE SE 1/4 OF SECTION 19 AND THE NE 1/4 OF SECTION 30 T2N R39E B1M



5/8" IRON ROD  
N 1/4 COR SECTION 30  
T2N R39E B1M  
INST. BY L.S. 8252  
INST. NO. 1030224

SECTION LINE (BASE OF BEARING)  
N89°40'07" W 2577.58'  
1787.16'

FOUND IRON ROD  
N.E. COR SECTION 30  
T2N R39E B1M  
INST. BY L.S. 8252  
INST. NO. 0740087

#### LEGEND & NOTES

- 3/8" x 30" Steel Rod with metal cap stamped 5878
- 1/2" x 24" Steel Rod with metal cap stamped 5879
- 3/8" Steel Rod with metal cap stamped 5880
- 1/2" Steel Rod with metal cap stamped 5881
- 3/8" Steel Rod with metal cap stamped 5882
- 1/2" Steel Rod with metal cap stamped 5883
- 3/8" Steel Rod with metal cap stamped 5884
- 1/2" Steel Rod with metal cap stamped 5885
- 3/8" Steel Rod with metal cap stamped 5886
- 1/2" Steel Rod with metal cap stamped 5887
- 3/8" Steel Rod with metal cap stamped 5888
- 1/2" Steel Rod with metal cap stamped 5889
- 3/8" Steel Rod with metal cap stamped 5890
- 1/2" Steel Rod with metal cap stamped 5891
- 3/8" Steel Rod with metal cap stamped 5892
- 1/2" Steel Rod with metal cap stamped 5893
- 3/8" Steel Rod with metal cap stamped 5894
- 1/2" Steel Rod with metal cap stamped 5895
- 3/8" Steel Rod with metal cap stamped 5896
- 1/2" Steel Rod with metal cap stamped 5897
- 3/8" Steel Rod with metal cap stamped 5898
- 1/2" Steel Rod with metal cap stamped 5899
- 3/8" Steel Rod with metal cap stamped 5900

First American Title Company  
 Idaho Falls, Idaho 83404  
 While this is a photographic  
 reproduction of the recorded  
 plat, the Company assumes no  
 liability for variations,  
 if any, with a resurvey.

Direct address from plat (see 2) South 1/2 of 1/4 Section 19  
 and West 1/2 of 1/4 Section 30  
 1. 1/2" x 24" Steel Rod with metal cap stamped 5879  
 2. 1/2" x 24" Steel Rod with metal cap stamped 5879  
 3. 1/2" x 24" Steel Rod with metal cap stamped 5879  
 4. 1/2" x 24" Steel Rod with metal cap stamped 5879  
 5. 1/2" x 24" Steel Rod with metal cap stamped 5879  
 6. 1/2" x 24" Steel Rod with metal cap stamped 5879  
 7. 1/2" x 24" Steel Rod with metal cap stamped 5879  
 8. 1/2" x 24" Steel Rod with metal cap stamped 5879  
 9. 1/2" x 24" Steel Rod with metal cap stamped 5879  
 10. 1/2" x 24" Steel Rod with metal cap stamped 5879  
 11. 1/2" x 24" Steel Rod with metal cap stamped 5879  
 12. 1/2" x 24" Steel Rod with metal cap stamped 5879  
 13. 1/2" x 24" Steel Rod with metal cap stamped 5879  
 14. 1/2" x 24" Steel Rod with metal cap stamped 5879  
 15. 1/2" x 24" Steel Rod with metal cap stamped 5879  
 16. 1/2" x 24" Steel Rod with metal cap stamped 5879  
 17. 1/2" x 24" Steel Rod with metal cap stamped 5879  
 18. 1/2" x 24" Steel Rod with metal cap stamped 5879  
 19. 1/2" x 24" Steel Rod with metal cap stamped 5879  
 20. 1/2" x 24" Steel Rod with metal cap stamped 5879  
 21. 1/2" x 24" Steel Rod with metal cap stamped 5879  
 22. 1/2" x 24" Steel Rod with metal cap stamped 5879  
 23. 1/2" x 24" Steel Rod with metal cap stamped 5879  
 24. 1/2" x 24" Steel Rod with metal cap stamped 5879  
 25. 1/2" x 24" Steel Rod with metal cap stamped 5879  
 26. 1/2" x 24" Steel Rod with metal cap stamped 5879  
 27. 1/2" x 24" Steel Rod with metal cap stamped 5879  
 28. 1/2" x 24" Steel Rod with metal cap stamped 5879  
 29. 1/2" x 24" Steel Rod with metal cap stamped 5879  
 30. 1/2" x 24" Steel Rod with metal cap stamped 5879  
 31. 1/2" x 24" Steel Rod with metal cap stamped 5879  
 32. 1/2" x 24" Steel Rod with metal cap stamped 5879  
 33. 1/2" x 24" Steel Rod with metal cap stamped 5879  
 34. 1/2" x 24" Steel Rod with metal cap stamped 5879  
 35. 1/2" x 24" Steel Rod with metal cap stamped 5879  
 36. 1/2" x 24" Steel Rod with metal cap stamped 5879  
 37. 1/2" x 24" Steel Rod with metal cap stamped 5879  
 38. 1/2" x 24" Steel Rod with metal cap stamped 5879  
 39. 1/2" x 24" Steel Rod with metal cap stamped 5879  
 40. 1/2" x 24" Steel Rod with metal cap stamped 5879  
 41. 1/2" x 24" Steel Rod with metal cap stamped 5879  
 42. 1/2" x 24" Steel Rod with metal cap stamped 5879  
 43. 1/2" x 24" Steel Rod with metal cap stamped 5879  
 44. 1/2" x 24" Steel Rod with metal cap stamped 5879  
 45. 1/2" x 24" Steel Rod with metal cap stamped 5879  
 46. 1/2" x 24" Steel Rod with metal cap stamped 5879  
 47. 1/2" x 24" Steel Rod with metal cap stamped 5879  
 48. 1/2" x 24" Steel Rod with metal cap stamped 5879  
 49. 1/2" x 24" Steel Rod with metal cap stamped 5879  
 50. 1/2" x 24" Steel Rod with metal cap stamped 5879  
 51. 1/2" x 24" Steel Rod with metal cap stamped 5879  
 52. 1/2" x 24" Steel Rod with metal cap stamped 5879  
 53. 1/2" x 24" Steel Rod with metal cap stamped 5879  
 54. 1/2" x 24" Steel Rod with metal cap stamped 5879  
 55. 1/2" x 24" Steel Rod with metal cap stamped 5879  
 56. 1/2" x 24" Steel Rod with metal cap stamped 5879  
 57. 1/2" x 24" Steel Rod with metal cap stamped 5879  
 58. 1/2" x 24" Steel Rod with metal cap stamped 5879  
 59. 1/2" x 24" Steel Rod with metal cap stamped 5879  
 60. 1/2" x 24" Steel Rod with metal cap stamped 5879  
 61. 1/2" x 24" Steel Rod with metal cap stamped 5879  
 62. 1/2" x 24" Steel Rod with metal cap stamped 5879  
 63. 1/2" x 24" Steel Rod with metal cap stamped 5879  
 64. 1/2" x 24" Steel Rod with metal cap stamped 5879  
 65. 1/2" x 24" Steel Rod with metal cap stamped 5879  
 66. 1/2" x 24" Steel Rod with metal cap stamped 5879  
 67. 1/2" x 24" Steel Rod with metal cap stamped 5879  
 68. 1/2" x 24" Steel Rod with metal cap stamped 5879  
 69. 1/2" x 24" Steel Rod with metal cap stamped 5879  
 70. 1/2" x 24" Steel Rod with metal cap stamped 5879  
 71. 1/2" x 24" Steel Rod with metal cap stamped 5879  
 72. 1/2" x 24" Steel Rod with metal cap stamped 5879  
 73. 1/2" x 24" Steel Rod with metal cap stamped 5879  
 74. 1/2" x 24" Steel Rod with metal cap stamped 5879  
 75. 1/2" x 24" Steel Rod with metal cap stamped 5879  
 76. 1/2" x 24" Steel Rod with metal cap stamped 5879  
 77. 1/2" x 24" Steel Rod with metal cap stamped 5879  
 78. 1/2" x 24" Steel Rod with metal cap stamped 5879  
 79. 1/2" x 24" Steel Rod with metal cap stamped 5879  
 80. 1/2" x 24" Steel Rod with metal cap stamped 5879  
 81. 1/2" x 24" Steel Rod with metal cap stamped 5879  
 82. 1/2" x 24" Steel Rod with metal cap stamped 5879  
 83. 1/2" x 24" Steel Rod with metal cap stamped 5879  
 84. 1/2" x 24" Steel Rod with metal cap stamped 5879  
 85. 1/2" x 24" Steel Rod with metal cap stamped 5879  
 86. 1/2" x 24" Steel Rod with metal cap stamped 5879  
 87. 1/2" x 24" Steel Rod with metal cap stamped 5879  
 88. 1/2" x 24" Steel Rod with metal cap stamped 5879  
 89. 1/2" x 24" Steel Rod with metal cap stamped 5879  
 90. 1/2" x 24" Steel Rod with metal cap stamped 5879  
 91. 1/2" x 24" Steel Rod with metal cap stamped 5879  
 92. 1/2" x 24" Steel Rod with metal cap stamped 5879  
 93. 1/2" x 24" Steel Rod with metal cap stamped 5879  
 94. 1/2" x 24" Steel Rod with metal cap stamped 5879  
 95. 1/2" x 24" Steel Rod with metal cap stamped 5879  
 96. 1/2" x 24" Steel Rod with metal cap stamped 5879  
 97. 1/2" x 24" Steel Rod with metal cap stamped 5879  
 98. 1/2" x 24" Steel Rod with metal cap stamped 5879  
 99. 1/2" x 24" Steel Rod with metal cap stamped 5879  
 100. 1/2" x 24" Steel Rod with metal cap stamped 5879