

# R & V PARK ADDITION

## DIVISION NO. 2

TO THE CITY OF IDAHO FALLS, IDAHO  
Part of the S 1/2 of Section 21, T.2N, R.38E.B.M.

**First American Title Company**

Idaho Falls, Idaho 83404

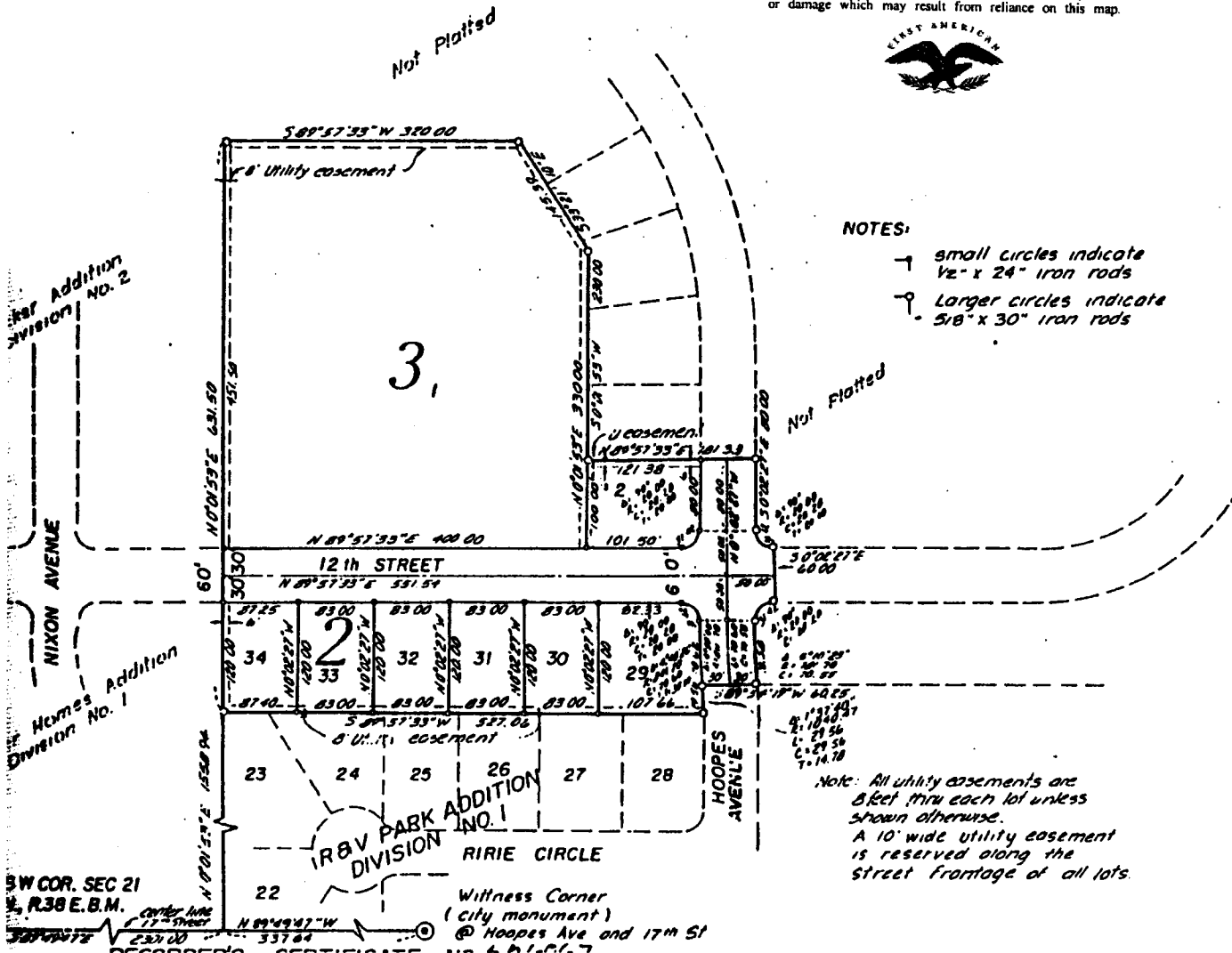
This sketch is made solely for the purpose of assisting in locating the premises. The company assumes no liability for alleged loss or damage which may result from reliance on this map.



Not Platted

**NOTES:**

- small circles indicate 1/2" x 24" iron rods
- Larger circles indicate 5/8" x 30" iron rods



Note: All utility easements are 8 feet thru each lot unless shown otherwise.  
A 10' wide utility easement is reserved along the street frontage of all lots.

Witness Corner  
(City monument)  
@ Hoopes Ave and 17th St

SW COR. SEC 21  
1/4, R.38 E.B.M.