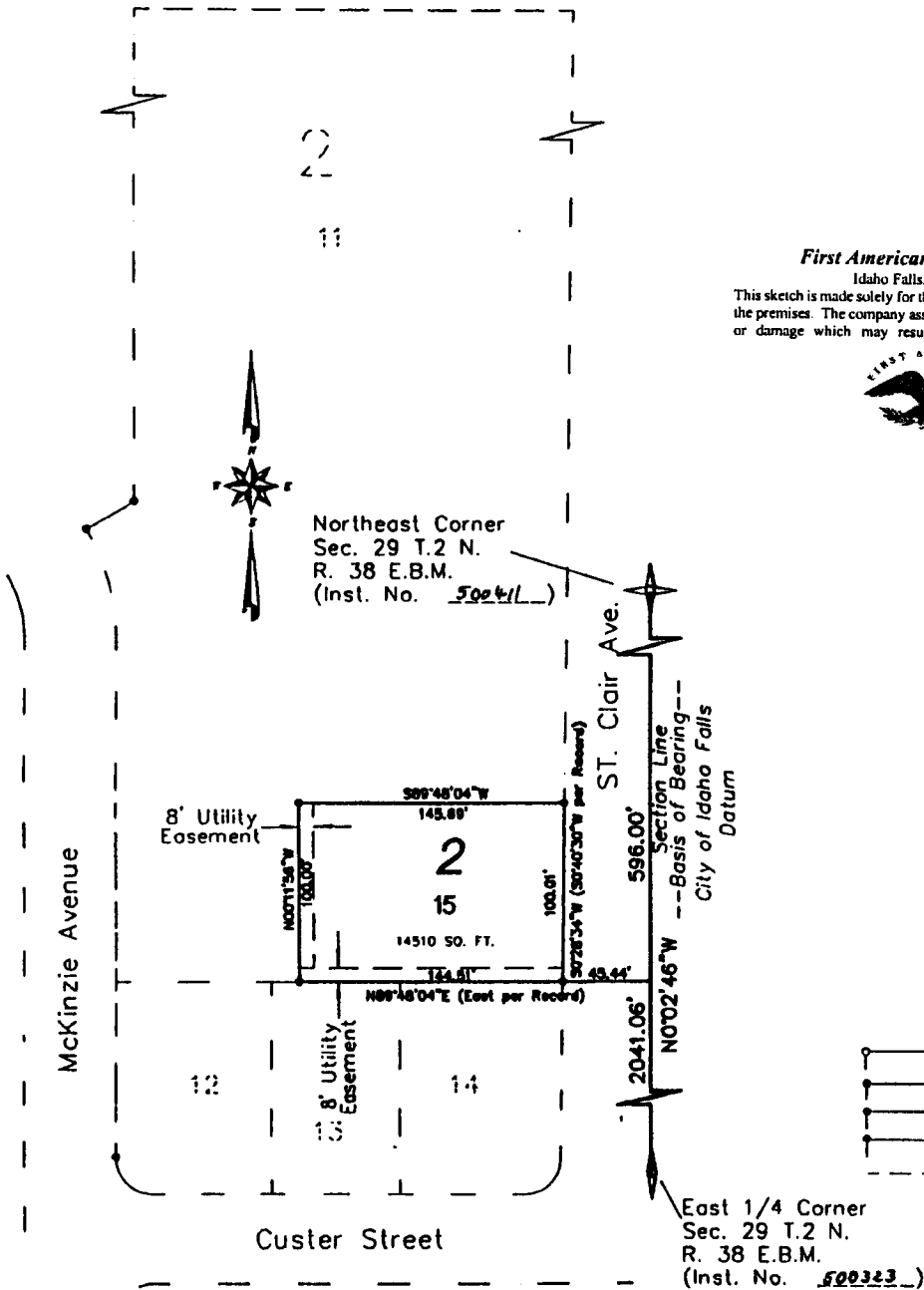


RADER'S TARA

DIVISION NO. 1

TO THE CITY OF IDAHO FALLS, BONNEVILLE COUNTY, IDAHO
 BEING A REPLAT OF A PORTION OF LOT 11, BLOCK 2, OF UNIVERSITY MANOR DIVISION NO. 2
 PART OF THE N.E. 1/4 OF THE N.E. 1/4 OF SECTION 29, T. 2 N., R. 38 E.B.M.



First American Title Company

Idaho Falls, Idaho 83404

This sketch is made solely for the purpose of assisting in locating the premises. The company assumes no liability for alleged loss or damage which may result from reliance on this map.



NOTES

- 24\"/> iron rod placed with a yellow plastic cap marked L.S. 722.
- 24\"/> iron rod found
- 30\"/> iron rod placed with a yellow plastic cap marked L.S. 722.
- 30\"/> iron rod found in asphalt
- Utility and drainage easements are 8' thru each lot unless otherwise shown.
- 8' side utility easement is reserved along the street side of all lots.