

RAILFENCE ESTATES DIVISION NO. 1

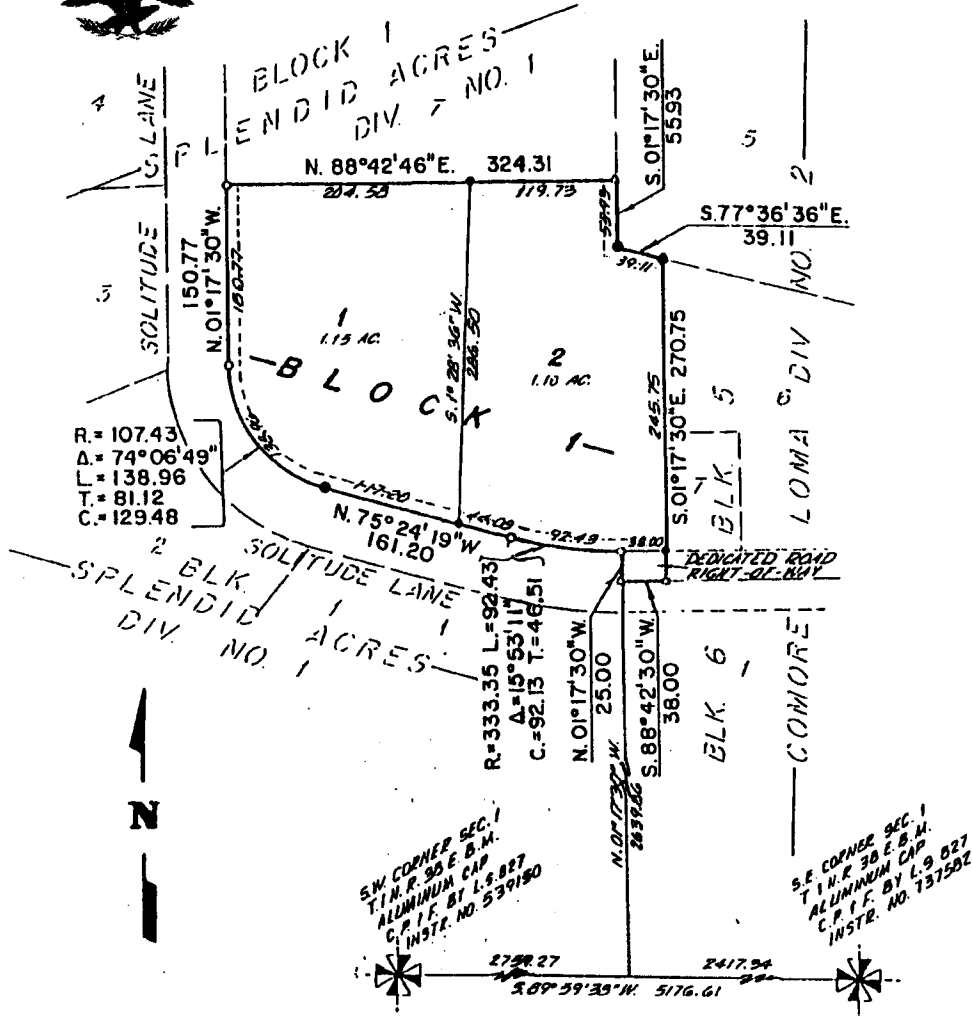
BONNEVILLE COUNTY, IDAHO

BEING A REPLAT OF LOT 8, BLOCK 1, SPLENDID ACRES, DIVISION NO. 1
AND PART OF LOTS 6 & 7, BLOCK 5, COMORE LOMA, DIVISION NO. 2
LYING IN SECTION 1, T. 1 N., R. 38 E., B. M.

First American Title Company

Idaho Falls, Idaho 83404

This sketch is made solely for the purpose of assisting in locating the premises. The company assumes no liability for alleged loss or damage which may result from reliance on this map.



LEGEND & NOTES

- 5/8" x 30" Steel Re bar set with plastic cap stamped L.S.827
- 1/2" x 24" Steel Re bar set with plastic cap stamped L.S.827
- 1/2" Steel Re bar found with unmanufactured Alu Caps
- A Ten foot wide Utility Easement is hereby granted along all road frontages within each lot. All other easements are Ten foot wide unless otherwise noted.
- The County will not maintain roads until constructed to County Standards and officially accepted.
- Magnetic Nail set in Asphalt or Concrete