

LEGEND AND NOTES

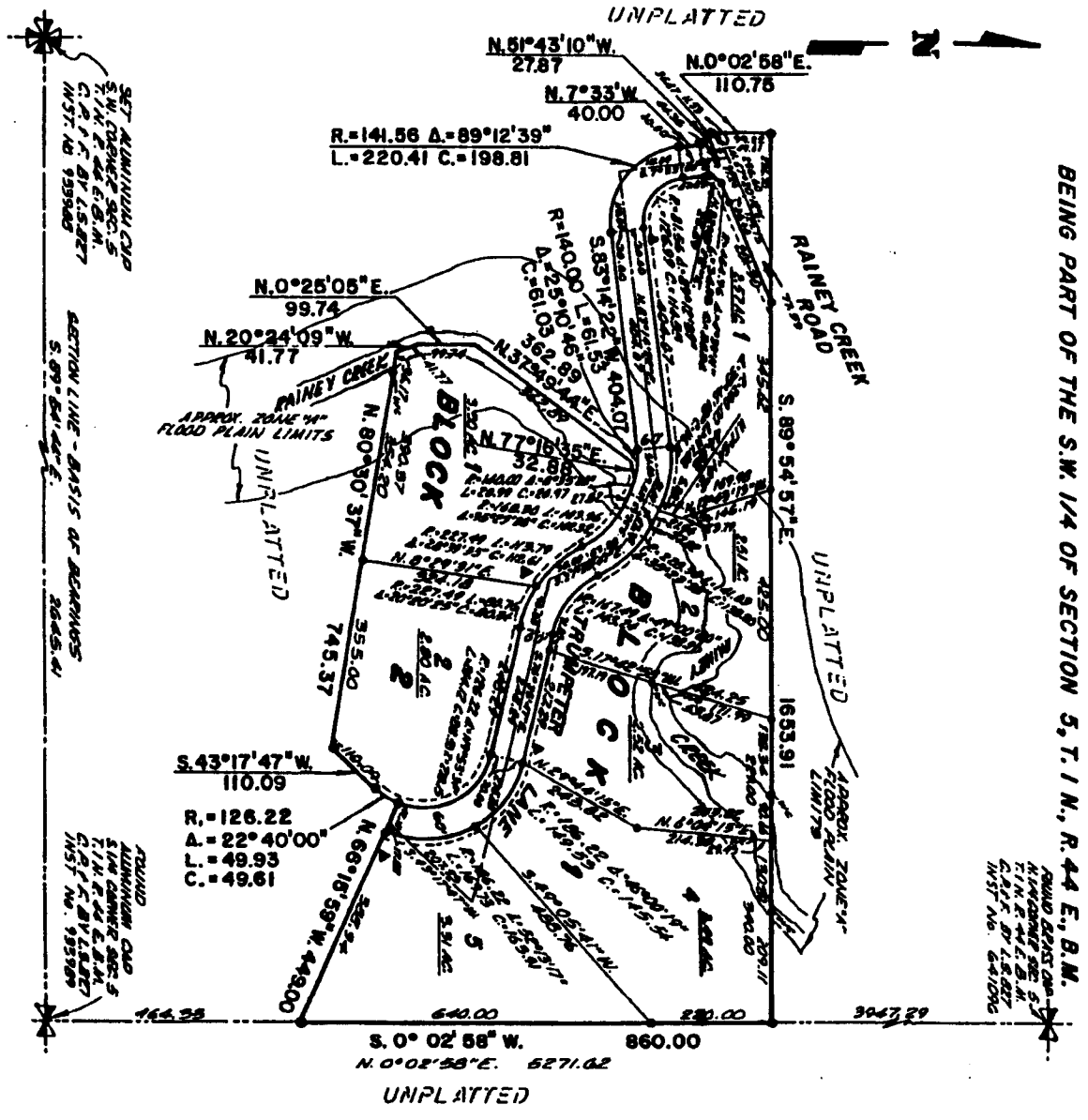
- Denotes 5/8" x 30" Steel Re-bar set with plastic cap stamped L.S. 027
- Denotes 1/2" x 24" Steel Re-bar set with plastic cap stamped L.S. 027
- Denotes Steel Re-bar found with plastic cap as shown
- 1 Ten foot wide Utility Easement is hereby granted along all Road Frontages through each lot. Other easements widths are as shown
- ▲ Approximate location of cisterns with dry hydrant for fire protection and pollution monitoring.
- Upon construction of said cisterns, the developer shall inform the Mayor and local fire protection agency of their actual locations.
- According to the FEMA Flood Plain FIRM Map, Swan Valley, Bonneville County Community Panel No. 160154-005-5, effective 08-01-1980, part of this subdivision adjoining the Rainey Creek Drainage lies within Zone "A" which is areas of 100 year flood; base flood elevation and flood hazard factors have not been determined.
- The lot owners are responsible for the maintenance of Trampeter Lane, before the City of Swan Valley or Bonneville County will assume the maintenance responsibility, said road must be improved to Bonneville County standards and officially approved and accepted.
- Private approaches are to be constructed and maintained by the lot owners and drainage swales must be retained.



First American Title Company
 Idaho Falls, Idaho 83404

This sketch is made solely for the purpose of assisting in locating the premises. The company assumes no liability for alleged loss or damage which may result from reliance on this map.

RAINEY CREEK MEADOWS
DIVISION NO. 1
IN THE CITY OF SWAN VALLEY, BONNEVILLE COUNTY, IDAHO
BEING PART OF THE S.W. 1/4 OF SECTION 5, T. 1 N., R. 44 E., B.M.



BOUND AGAINST DIVISION NO. 5, T. 1 N., R. 44 E., B.M. C.P. & B.V. LIBERTY INST. NO. 641086

SET ALIQUOT PART OF SWAN VALLEY CREEK MEADOWS DIVISION NO. 1, C.P. & B.V. LIBERTY INST. NO. 193580

SECTION LINE - BASIS OF RECORDS S. 09° 54' 41\"/>

BOUND AGAINST DIVISION NO. 5, T. 1 N., R. 44 E., B.M. C.P. & B.V. LIBERTY INST. NO. 193580