

FOUND BRASS CAP  
 T. 24 N. R. 22 E. S. 24  
 CORNER BY U.S. 427  
 INSTR. NO. 802076

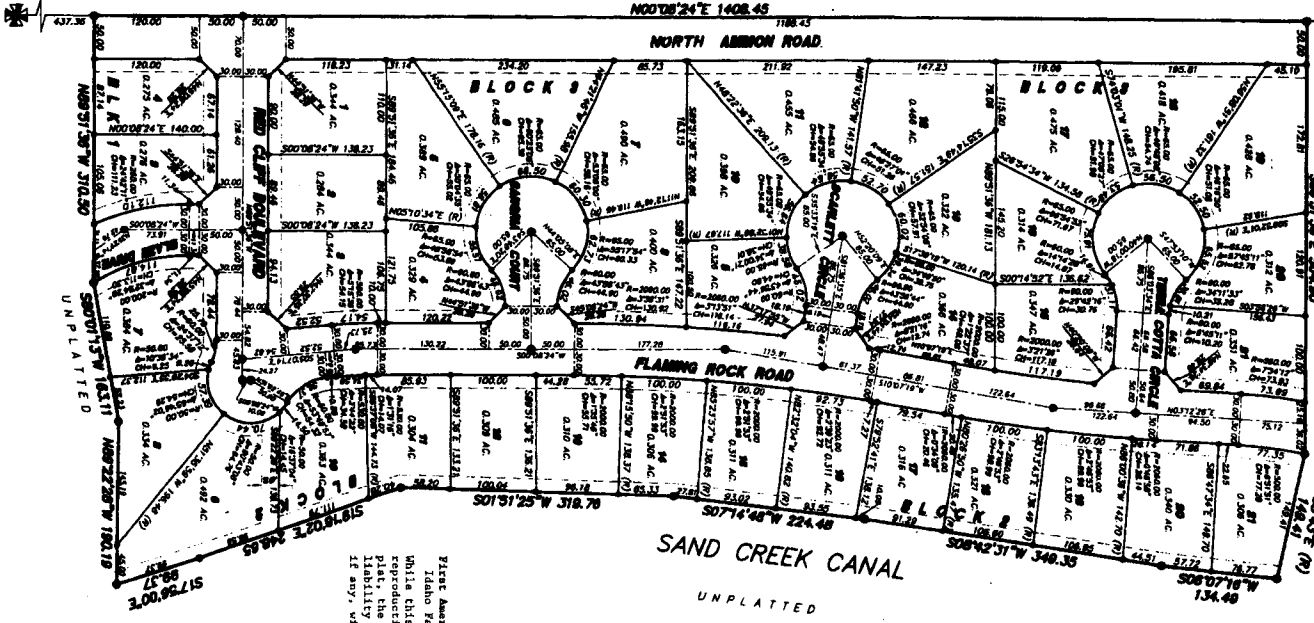
# RED ROCK ESTATES

DIVISION NO. 1  
 BONNEVILLE COUNTY, IDAHO  
 BEING PART OF THE S.W. 1/4 OF SECTION 2, T. 24 N., R. 22 E. S. 24

DIRECT ACCESS ONTO AMMON ROAD  
 FROM LOTS IN THIS SUBDIVISION IS NOT ALLOWED

SECTION LINE (BASIS OF BEARING, GPS)  
 N00°08'24"E 2622.02  
 N00°08'24"E 1408.45

FOUND BRASS CAP  
 T. 24 N. R. 22 E. S. 24  
 CORNER BY U.S. 427  
 INSTR. NO. 500743



Virt American Title Company  
 Idaho Falls, Idaho 83404  
 While this is a photographic  
 reproduction of the recorded  
 plat, the Company assumes no  
 liability for variations,  
 if any, with a re-survey.

### LEGEND & NOTES

- 5/8" x 3/8" Small red dot with plastic cap stamped L.S. 8795
- 1/2" x 1/4" Small red dot with plastic cap stamped L.S. 8795
- A 15 foot wide utility easement is hereby reserved along all road frontages within each lot. All other utility easements are 15 feet wide unless noted otherwise.
- The division contains 38 lots (0.38 acre average lot size)
- Bonneville County will not maintain roads until approved by County Engineers and obtain approval and accepted LOTS shown on the plat are included in a Utility District and will be assessed for the operation and maintenance costs. Changes made to Utility District boundaries and Utility easements will be considered and completed with the correct cross-section as shown on the approved improvement drawings on file in the office of the County Engineer and American River Engineering.
- According to the FEMA Flood Zone (FIRM) map Bonneville County, Oregon, prepared by 1002703020, indicate Area 2 (AE) the subdivision hereon is "not determined to be within 500 year flood plain"