

RETTIUS RETREAT DIVISION NO. 1 BONNEVILLE COUNTY, IDAHO

PART OF THE SW 1/4 OF THE NW 1/4 OF SECTION 13, T. 2 N., R. 38 E., B.M.

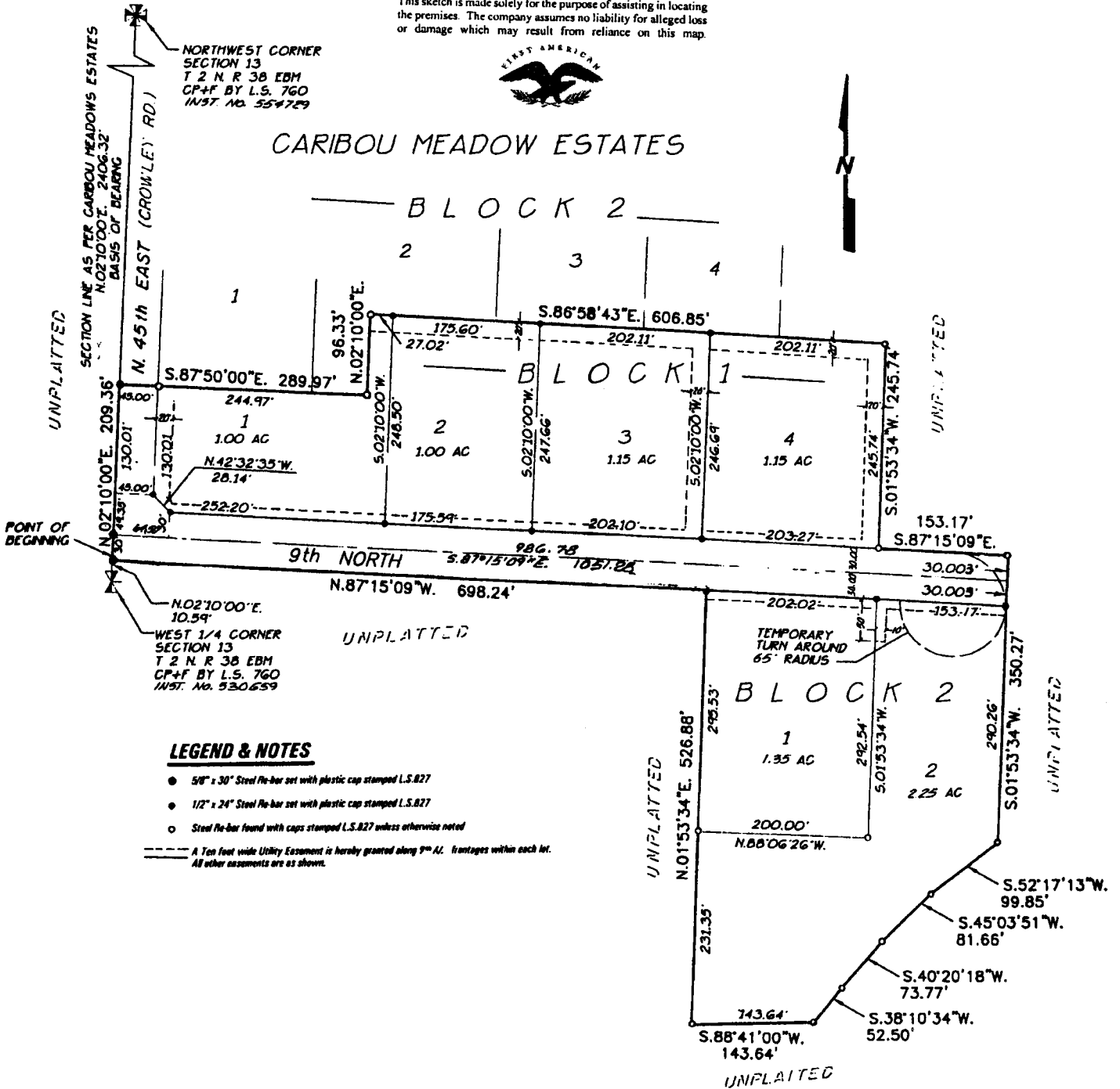
First American Title Company

Idaho Falls, Idaho 83404

This sketch is made solely for the purpose of assisting in locating the premises. The company assumes no liability for alleged loss or damage which may result from reliance on this map.



CARIBOU MEADOW ESTATES



LEGEND & NOTES

- 5/8" x 30" Steel Re-bar set with plastic cap stamped L.S.827
- 1/2" x 24" Steel Re-bar set with plastic cap stamped L.S.827
- Steel Re-bar found with caps stamped L.S.827 unless otherwise noted
- A Ten foot wide Utility Easement is hereby granted along 9th AL. frontages within each lot. All other easements are as shown.