

LEGEND & NOTES

- 1. 1/4" = 100' Scale
- 2. 1/4" = 100' Scale
- 3. 1/4" = 100' Scale

First American Tile Company

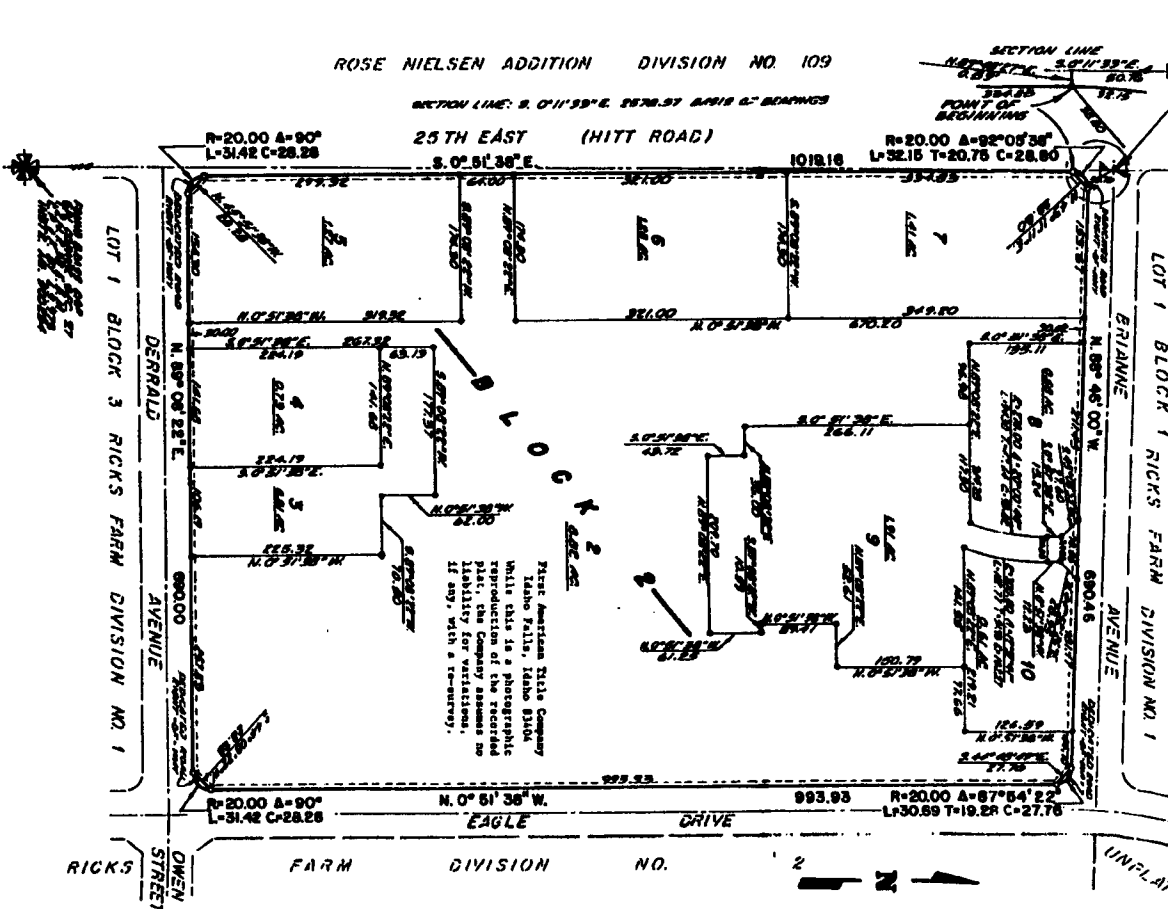
Idaho Falls, Idaho 83404

This sketch is made solely for the purpose of assisting in locating the premises. The company assumes no liability for alleged loss or damage which may result from reliance on this map.



**FIRST AMENDED PLAT OF
RICKS FARM DIVISION NO. 1
AN ADDITION TO THE CITY OF ANMON,
BONNEVILLE COUNTY, IDAHO**

BEING A REPLAT OF LOT 1, BLOCK 3, RICKS FARM DIVISION NO. 1
IN THE S.W. 1/4 OF SECTION 27, T. 2 N., R. 58 E., S. 8 M.



FOUND BARRIS BAR
N. 1/4 CORNER SEC. 27
T. 2 N. R. 58 E. S. 8 M.
S. 1/4 CORNER SEC. 27
T. 2 N. R. 58 E. S. 8 M.
PLAT NO. 300580