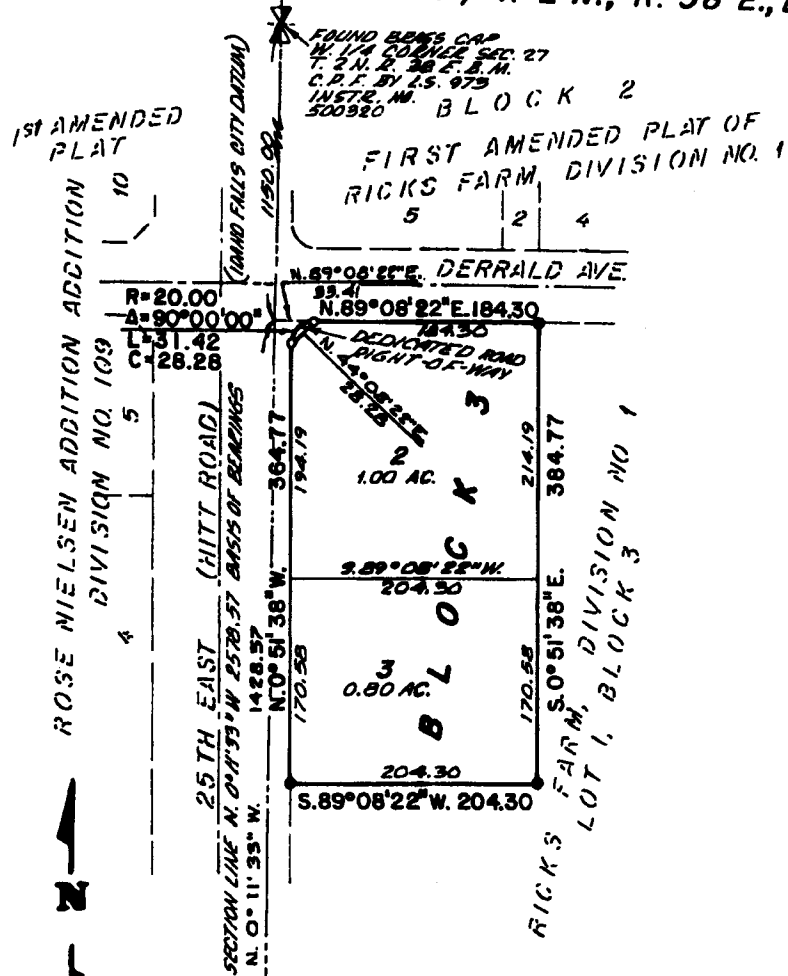


**THIRD AMENDED PLAT OF  
RICKS FARM, DIVISION NO. 1  
AN ADDITION TO THE CITY OF AMMON,  
BONNEVILLE COUNTY, IDAHO**  
BEING A REPLAT OF A PART OF LOT 1, BLOCK 3, RICKS FARM, DIVISION NO. 1  
IN THE S.W. 1/4 OF SECTION 27, T. 2 N., R. 38 E., B.M.



FOUND BEARS CAP  
S.W. CORNER SEC. 27  
T. 2 N. R. 38 E. B.M.  
C.P.F. BY L.S. 975  
INSTR. NO. 500234

**First American Title Company**  
Idaho Falls, Idaho 83404  
This sketch is made solely for the purpose of assisting in locating the premises. The company assumes no liability for alleged loss or damage which may result from reliance on this map.



**LEGEND & NOTES**

- 5/8" x 30" Steel Re-bar set with plastic cap stamped L.S.8795
  - 1/2" x 24" Steel Re-bar set with plastic cap stamped L.S.8795
  - 1/2" Steel Re-bar found with caps stamped L.S.3385 unless otherwise shown
- A Ten foot wide Utility Easement is hereby granted along all road frontages within each lot.  
All other easements are ten feet wide unless otherwise noted.