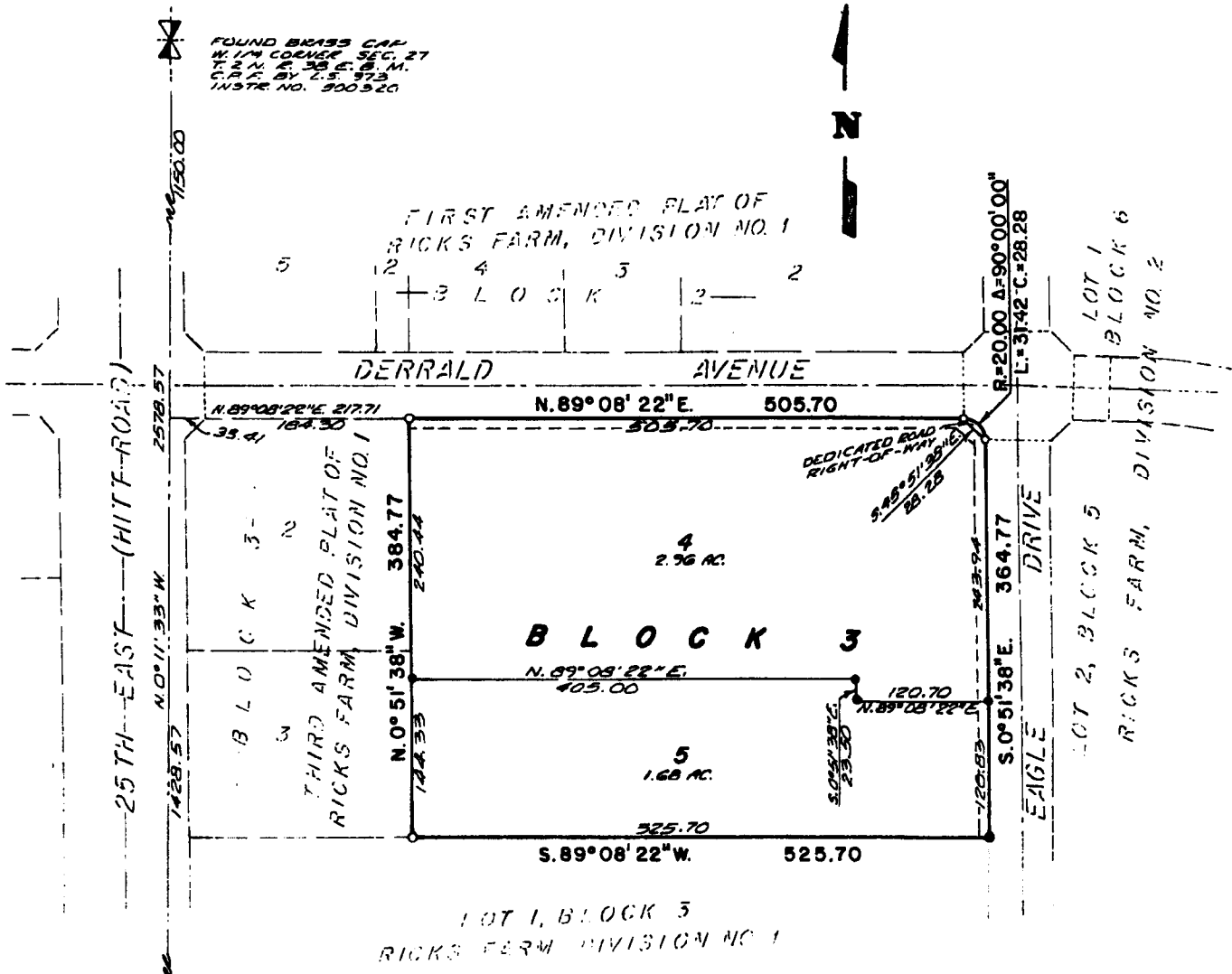


FOURTH AMENDED PLAT OF RICKS FARM, DIVISION NO. 1 AN ADDITION TO THE CITY OF AMMON, BONNEVILLE COUNTY, IDAHO

BEING A REPLAT OF A PART OF LOT 1, BLOCK 3, RICKS FARM, DIVISION NO. 1
IN THE S.W. 1/4 OF SECTION 27, T. 2 N., R. 38 E., B.M.



FOUND BRASS CAP
S.W. CORNER SEC. 27
T. 2 N. R. 38 E. B. M.
C.P.F. BY L.S. 973
INSTR. NO. 500234

First American Title Company
Idaho Falls, Idaho 83404

This sketch is made solely for the purpose of assisting in locating the premises. The company assumes no liability for alleged loss or damage which may result from reliance on this map.



LEGEND & NOTES

- 5/8" x 30" Steel Re bar set with plastic cap stamped I.S. 8795
- 1/2" x 24" Steel Re bar set with plastic cap stamped I.S. 8795
- 5/8" Steel Re bar found with caps stamped I.S. 8795
- 1/2" Steel Re bar found with caps stamped I.S. 3385

----- A Ten foot wide Utility Easement is hereby granted along all road frontages within each lot
All other easements are ten feet wide unless otherwise noted.