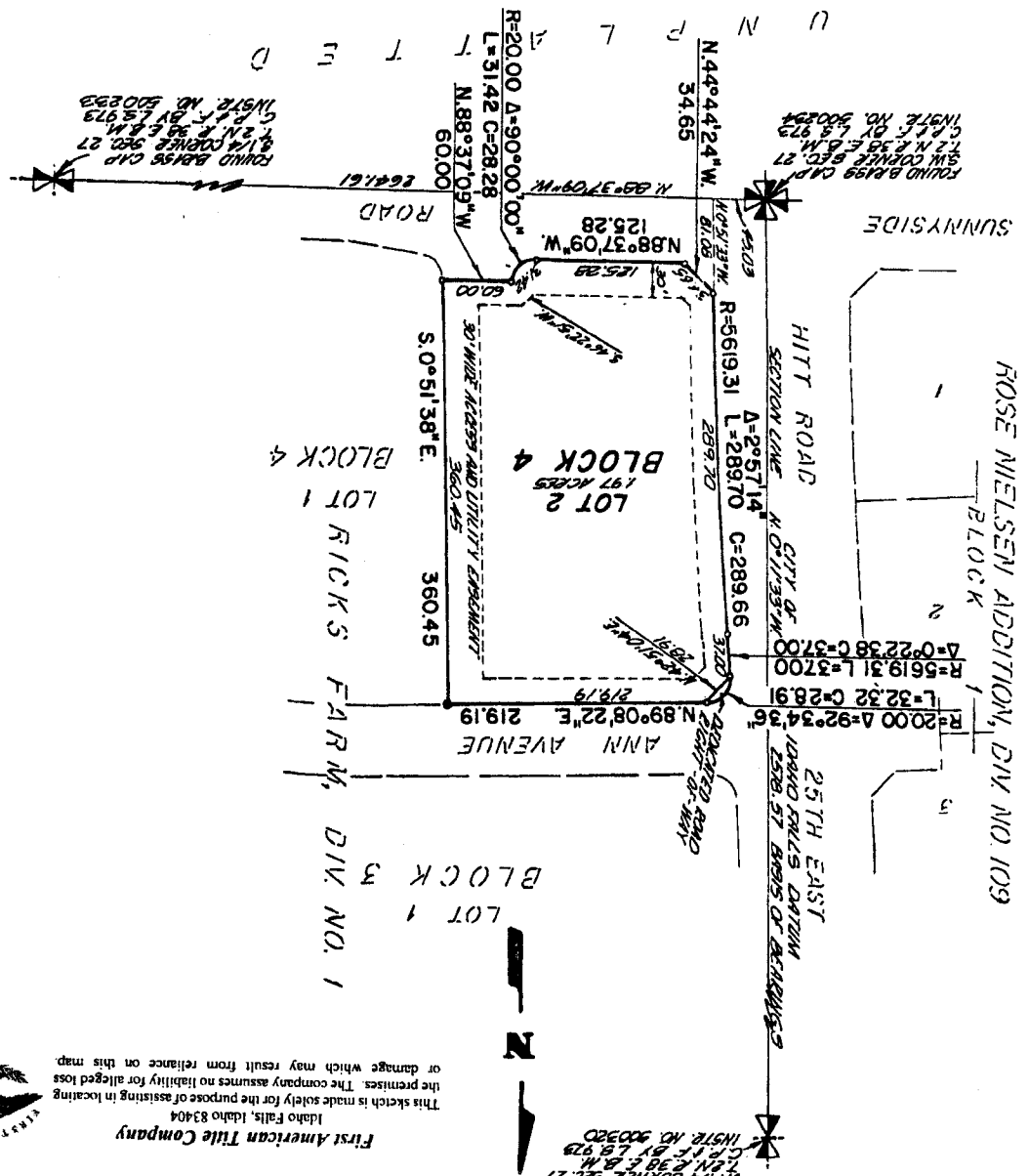


**FIFTH AMENDED PLAT OF  
RICKS FARM, DIVISION NO. 1  
AN ADDITION TO THE CITY OF AMMON,  
BONNEVILLE COUNTY, IDAHO  
BEING A REPLAT OF A PART OF LOT 1, BLOCK 4, RICKS FARM, DIVISION NO. 1  
IN THE S.W. 1/4 OF SECTION 27, T. 2 N., R. 38 E., B.M.**

Idaho Falls, Idaho 83404  
First American Title Company  
This sketch is made solely for the purpose of assisting in locating  
the premises. The company assumes no liability for alleged loss  
or damage which may result from reliance on this map.



**LEGEND & NOTES**

- 5/8" x 30" Steel Re-bar set with plastic cap stamped L.S. 8795
- 1/2" Steel Re-bar found with ~~cap stamped L.S. 8795~~ NO CAPS

A Twenty foot wide Utility Easement is hereby granted along all road frontages except along part of Sunnyside Road which is Thirty feet wide as shown. A Thirty foot wide Access and Utility Easement is granted along the East line of Lot 2. All other easements are as shown.