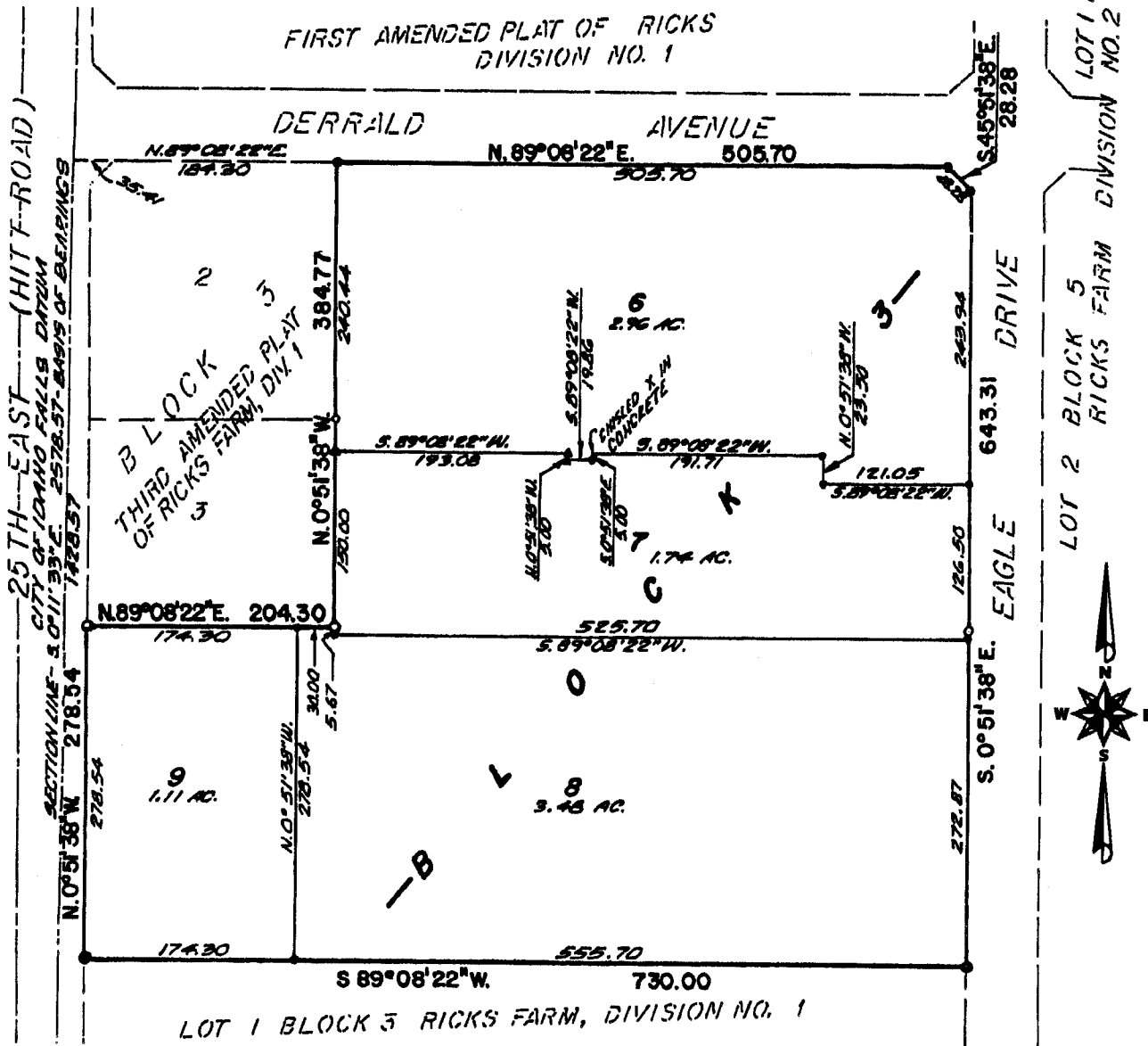


# Sixth Amended Plat Of RICKS FARM, Division No. 1

## AN ADDITION TO THE CITY OF AMMON, BONNEVILLE COUNTY, IDAHO

Being a Replat of a part of Lot 1, Block 3, Ricks Farm, Division No. 1 and  
of Lots 4 and 5, Block 3, Fourth Amended Plat of Ricks Farm, Division  
No. 1 in the S.W. E of Section 27, T. 2 N., R. 38 E., B.M.



**First American Title Company**

Idaho falls, Idaho 83404

This sketch is made solely for the purpose of assisting in locating the premises. The company assumes no liability for alleged loss or damage which may result from reliance on this map.

