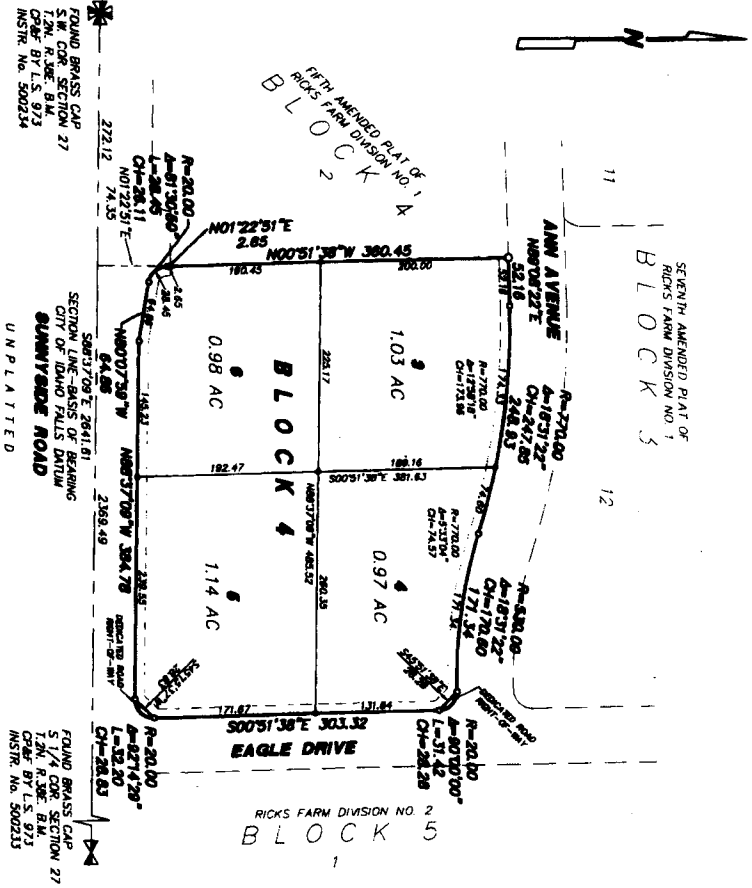


**NINTH AMENDED PLAT OF  
RICKS FARM, DIVISION NO. 1**  
AN ADDITION TO THE CITY OF AMMON,  
BONNEVILLE COUNTY, IDAHO  
BEING A REPLAT OF LOT 1 BLOCK 4, RICKS FARM DIVISION NO. 1  
IN THE S.W. 1/4 OF SECTION 27, T.2N., R.28E. B.M.



First American Title Company  
Idaho Falls, Idaho 83404

While this is a photographic  
reproduction of the recorded  
plat, the Company assumes no  
liability for variations,  
if any, with a re-survey.

**LEGEND & NOTES**

- 1/2" x 2" Sheet (Refer to with yellow cap stamped L.S. 973)
- 5/8" Sheet (Refer to with red cap stamped L.S. 973)
- 1/2" Sheet (Refer to with no cap)

A line that ends with a yellow cap stamped L.S. 973 is hereby granted along all road frontages within each lot